

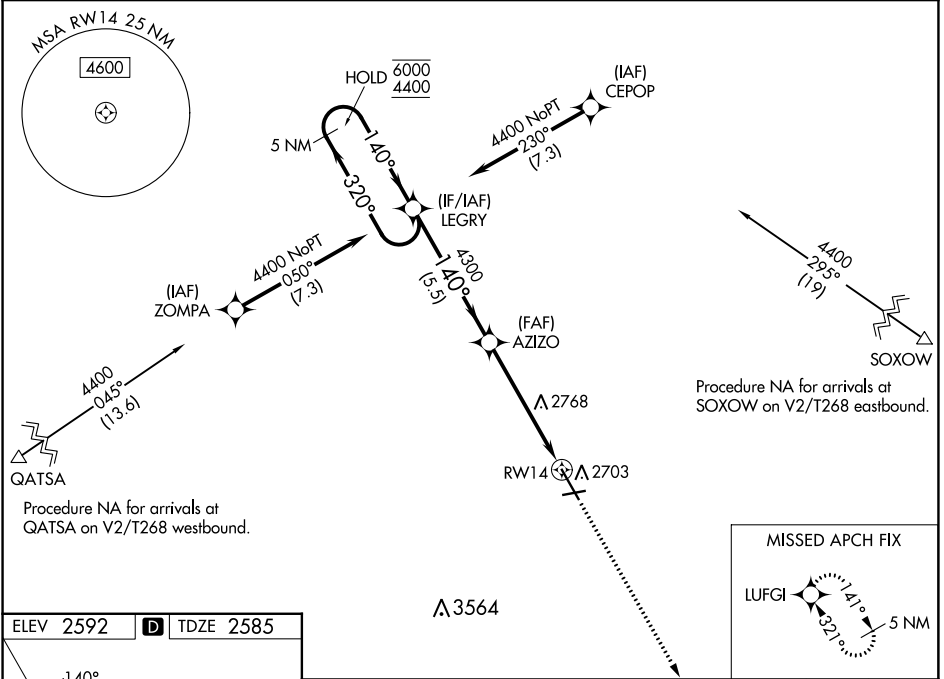
WAAS CH 45944 W14A	APP CRS 140°	Rwy ldg 7301 TDZE 2585 Apt Elev 2592
--	------------------------	---

RNAV (GPS) RWY 14

DICKINSON/THEODORE ROOSEVELT RGNL (DIK)

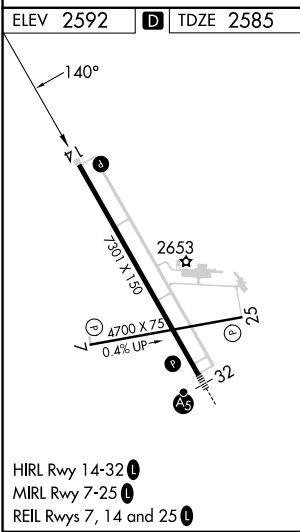
RNP APCH - GPS.		MISSED APPROACH: Climb to 5000 direct LUGFI and hold.
<p>▽ ▲</p> <p>For uncompensated Baro-VNAV systems, LNAV/VNAV NA below -24°C or above 54°C.</p>		

ASOS 118.375	MINNEAPOLIS CENTER 124.25 236.825	UNICOM 123.0 (CTAF) 0
------------------------	---	---------------------------------



NC-1, 28 NOV 2024 to 26 DEC 2024

NC-1, 28 NOV 2024 to 26 DEC 2024



5 NM Holding Pattern		LEGRY	AZIZO	5000	LUGFI
6000 ← 320°		→ 140°		↑	◆
4400		4300			
GP 3.00°		1.2 NM to RWY 14			
TCH 50		RWY 14			
		5.5 NM		4 NM	
				1.2 NM	
CATEGORY	A	B	C	D	
LPV DA	2785- ³ / ₄		200 (200- ³ / ₄)		
LNAV/VNAV DA	2835- ³ / ₄		250 (300- ³ / ₄)		
LNAV MDA	3020-1 435 (500-1)		3020-1 ¹ / ₄ 435 (500-1 ¹ / ₄)		
CIRCLING	3060-1 468 (500-1)		3120-1 ¹ / ₂ 528 (600-1 ¹ / ₂)		3200-2 608 (700-2)