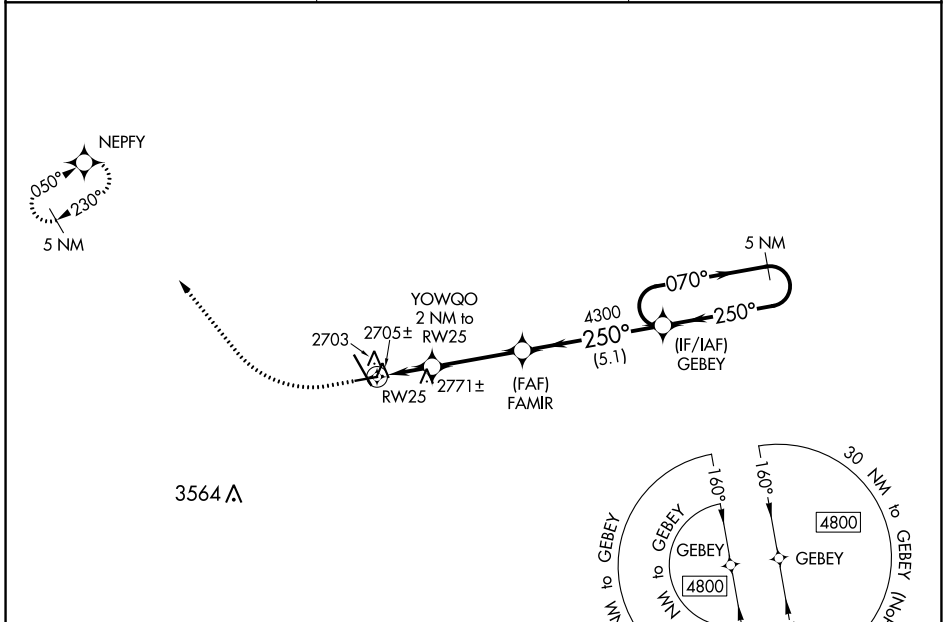


WAAS CH 82534 W25A	APP CRS 250°	Rwy Idg TDZE Apt Elev	4700 2592 2592
--	------------------------	-----------------------------	---

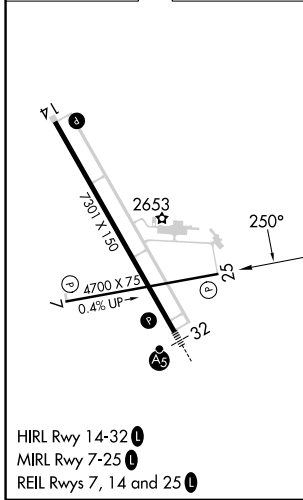
RNAV (GPS) RWY 25

DICKINSON/THEODORE ROOSEVELT RGNL (DIK)

RNP APCH.		MISSED APPROACH: Climb to 3200 then climbing right turn to 4800 direct NEPFY and hold.
ASOS 118.375	MINNEAPOLIS CENTER 124.25 236.825	UNICOM 123.0 (CTAF) 0



ELEV	2592	D	TDZE	2592
------	------	----------	------	------



	3200	4800	NEPFY	
	↑	↪	✧	
	YOWQO 2 NM to RW25		FAMIR	GEBEY
	≤ 3.00° TCH 28	250°	250°	070° → 4800
	3240	4300		
	2 NM	3.3 NM	5.1 NM	
CATEGORY	A	B	C	D
LP MDA	2980-1	388 (400-1)	2980-1½	388 (400-1½)
LNAV MDA	3060-1	468 (500-1)	3060-1¾	468 (500-1¾)
C CIRCLING	3080-1 488 (500-1)	3100-1 508 (600-1)	3120-1½ 528 (600-1½)	3220-2 628 (700-2)

NC-1, 28 NOV 2024 to 26 DEC 2024

NC-1, 28 NOV 2024 to 26 DEC 2024