

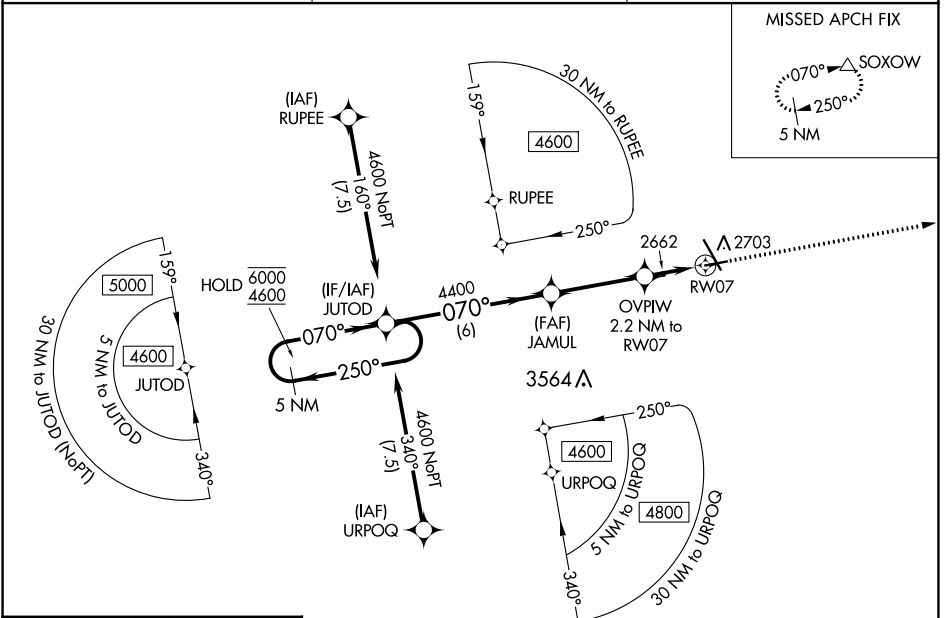
WAAS CH 90544 W07A	APP CRS 070°	Rwy ldg 4700 TDZE 2583 Apt Elev 2592
--	------------------------	---

RNAV (GPS) RWY 7

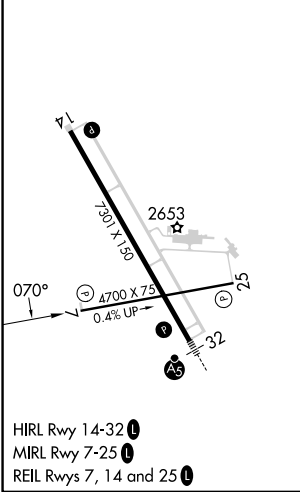
DICKINSON/THEODORE ROOSEVELT RGNL (DIK)

RNP APCH - GPS.	MISSED APPROACH: Climb to 4600 direct SOXOW and hold.
-----------------	---

ASOS 118.375	MINNEAPOLIS CENTER 124.25 236.825	UNICOM 123.0 (CTAF) 0
------------------------	---	---------------------------------



ELEV 2592	D	TDZE 2583
------------------	----------	------------------



VGSI and RNAV glidepath not coincident (VGSI Angle 3.00/TCH 27).				4600	SOXOW
5 NM Holding Pattern				↑	△
GP 3.00° TCH 45					
CATEGORY	A	B	C	D	
LPV DA	2833-1		250 (300-1)		
LNAV/VNAV DA	2833-1		250 (300-1)		
LNAV MDA	2920-1		337 (400-1)		
CIRCLING	3060-1	468 (500-1)	3120-1½ 528 (600-1½)	3200-2 608 (700-2)	

NC-1, 28 NOV 2024 to 26 DEC 2024

NC-1, 28 NOV 2024 to 26 DEC 2024