

COPTER VOR RWY 36

DOTHAN RGNL (DHN)

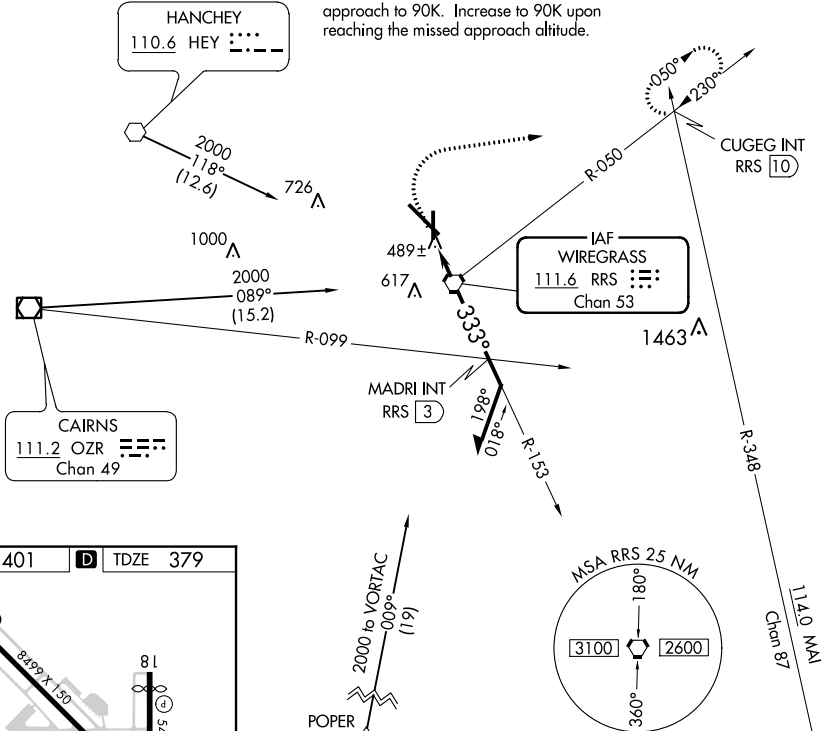
VORTAC RRS 111.6 Chan 53	APP CRS 333°	Rwy Idg TDZE Apt Elev	5000 379 401
---------------------------------------	------------------------	-----------------------------	---

▼ When local altimeter setting not received, use Cairns AAF (Fort Novosel) altimeter setting and increase all MDA 60 feet.

MISSED APPROACH: Climb to 900 then climbing right turn to 2000 on heading 080° and RRS VORTAC R-050 to CUGEG INT/RRS 10 DME and hold.

ATIS 135.725	CAIRNS APP CON ★ 125.4 327.125	DOTHAN TOWER ★ 118.4 (CTAF) 257.6	GND CON 121.7 348.6	UNICOM 122.95
------------------------	--	---	-------------------------------	-------------------------

Limit final and missed approach to 70K. Limit feeder, initial, and intermediate approach to 90K. Increase to 90K upon reaching the missed approach altitude.



SE-4, 28 NOV 2024 to 26 DEC 2024

SE-4, 28 NOV 2024 to 26 DEC 2024

ELEV 401	D	TDZE 379
----------	----------	----------

REIL Rwy 18
REIL Rwy 14
HIRL Rwy 18-36
HIRL Rwy 14-32

FAF to MAP 1.8 NM					
Knots	45	60	75	90	105
Min:Sec	2:24	1:48	1:26	1:12	1:02

900	2000	RRS R-050	CUGEG INT	RRS VORTAC	Remain within 5 NM
↑	hdg 080°				
153°		MADRI INT RRS 3		2000	
5.22° HCH 40		333°		2000	
1.8 NM		3 NM		1400	
COPTER					
CATEGORY	H-36				
	740-1 361 (400-1)				