

DULUTH, MINNESOTA

# HI-TACAN Z RWY 9

TACAN LKI Chan 11	APCH CRS 087°	Rwy ldg 10,062 TDZE 1428 Arprt Elev 1428
----------------------	------------------	--

AL-125 [USAF]

DULUTH INTL (KDLH)

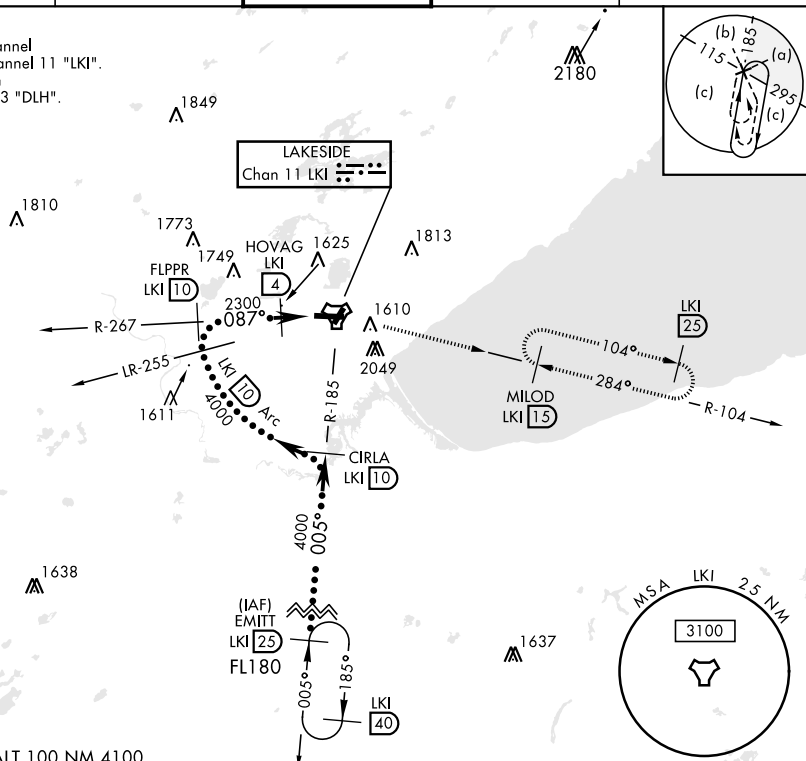
RADAR required for procedure entry.

ALSF-2

MISSED APPROACH: Climb to 2500 then climbing right turn to 4000 on LKI TACAN R-104 to MILOD (15 DME) and hold.

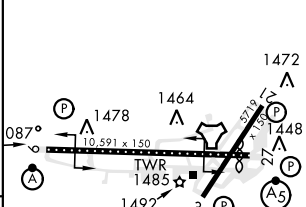
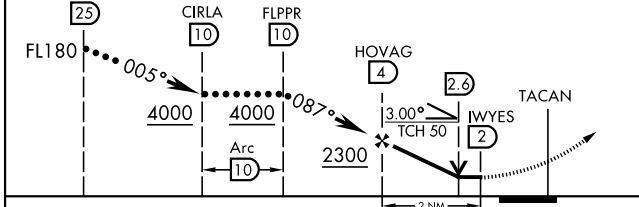
ATIS 124.1 270.1	APP CON 125.45 233.7	TOWER 118.3 257.8	GND CON 121.9 348.6	ASR
---------------------	-------------------------	----------------------	------------------------	-----

CAUTION:  
Do not select channel 73 "DLH" for channel 11 "LKI".  
Towers 2049" on R-099 channel 73 "DLH".



EMERG SAFE ALT 100 NM 4100

VGSI and descent angles not coincident (VGSI Angle 3.00/TCH 70).	2500	4000	MILOD LKI 15	ELEV 1428	TDZE 1428
--	------	------	--------------	-----------	-----------



CATEGORY	C	D	E
S-9*	1880/45	452	(500-1)
CIRCLING**	1940-1½ 512 (600-1½)	2020-2 592 (600-2)	2060-2¼ 632 (700-2¼)

TDZL/CL Rwy 9-27  
REIL Rwy 3 and 21  
HIRL Rwy 3-21 and 9-27

DULUTH, MINNESOTA  
Amdt 3A 03NOV22

46°51'N-92°12'W

DULUTH INTL (KDLH)

# HI-TACAN Z RWY 9

NC-1, 28 NOV 2024 to 26 DEC 2024

NC-1, 28 NOV 2024 to 26 DEC 2024