

VORTAC DLH 112.6 Chan 73	APP CRS 197°	Rwy ldg 5719 TDZE 1420 Apt Elev 1428
---------------------------------------	------------------------	---

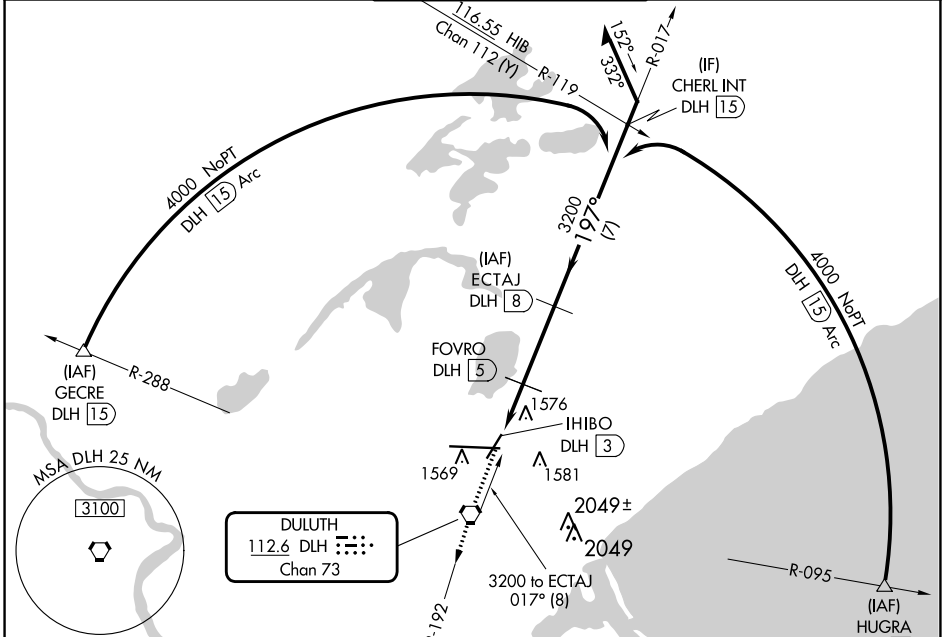
VOR/DME or TACAN RWY 21

DULUTH INTL (DLH)

ASR Circling NA for Cat E southeast of Rwy 3-27.
 Visibility reduction by helicopters NA.
 Rwy 21 Straight-in and Circling minimums NA at night.

MISSED APPROACH: Climb to 3800 direct DLH VORTAC then on DLH VORTAC R-192 to MIZOU/DLH 7 DME and hold.

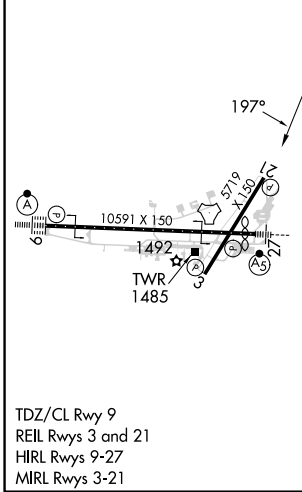
ATIS 124.1 270.1	DULUTH APP CON 125.45 233.7	DULUTH TOWER 118.3 257.8	GND CON 121.9 348.6
----------------------------	---------------------------------------	------------------------------------	-------------------------------



NC-1, 28 NOV 2024 to 26 DEC 2024

NC-1, 28 NOV 2024 to 26 DEC 2024

ELEV 1428	D	TDZE 1420
------------------	----------	------------------



TDZ/CL Rwy 9
 REIL Rws 3 and 21
 HIRL Rws 9-27
 MIRL Rws 3-21

3800	DLH	DLH	MIZOU	ECTAJ	VGSI and descent angles not coincident (VGSI Angle 3.00/TCH 37). Remain within 15 NM	
↑	DLH R-192	DLH 7	DLH 7	DLH 8	017°	3200
	IHIBO	FOVRO			3200	197°
	DLH 3	DLH 5			2100	
					≤ 3.29°	TCH 45
					2 NM	3 NM
CATEGORY	A	B	C	D	E	
S-21	1860-1	440 (500-1)	1860-1 ³ / ₈	440 (500-1 ³ / ₈)		
C CIRCLING	1880-1	1900-1	1940-1 ¹ / ₂	2400-3	972 (1000-3)	
	452 (500-1)	472 (500-1)	512 (600-1 ¹ / ₂)			