

# HI-VOR or TACAN RWY 26L

EL PASO INTL (KELP)

VORTAC ELP <b>115.2</b> Chan <b>99</b>	APCH CRS <b>245°</b>	Rwy ldg THRE Arpt Elev <b>9025</b> <b>3962</b> <b>3962</b>
--	-------------------------	---

AL-134 [USAF]

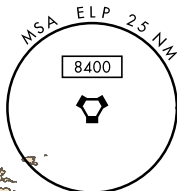
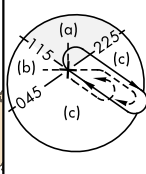
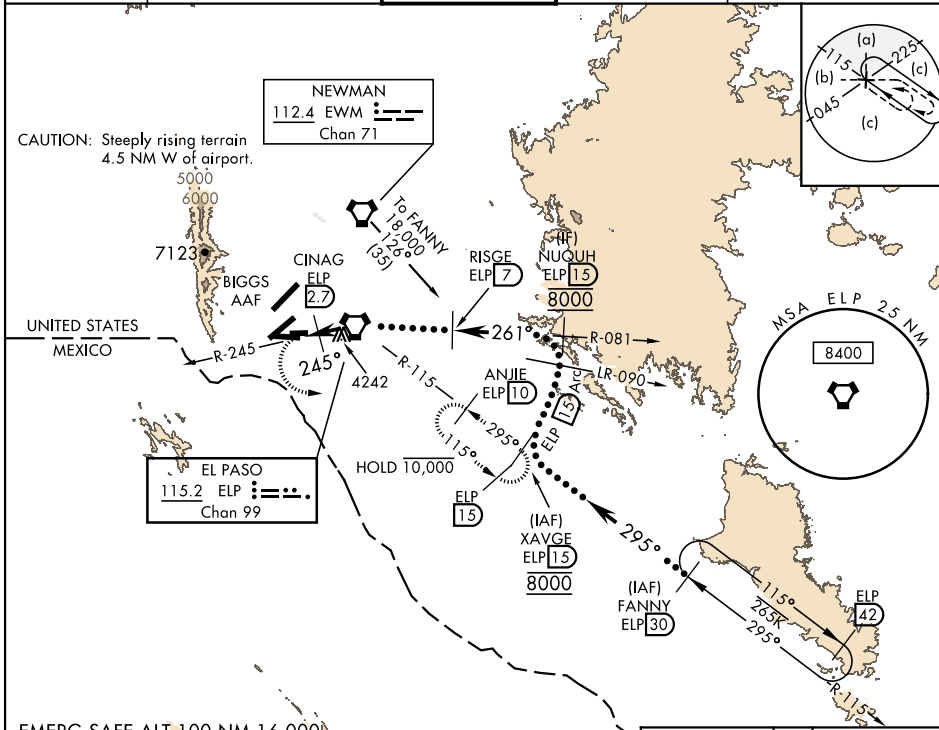
DME required.



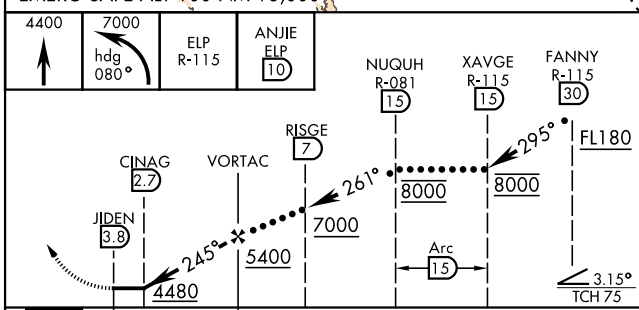
MISSED APPROACH: Climb to 4400, then climbing left turn to 7000 via heading 080° and ELP VORTAC R-115 to ANJIE/ELP 10 DME and hold, continue climb in hold to 7000.

**▽** \* Circling NA for CAT DE west of Rwy 4-22.

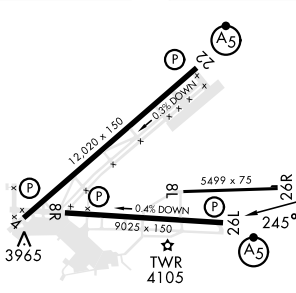
ATIS <b>120.0 254.3</b>	APP CON S of V16 <b>119.15 353.5</b> N of V16 <b>124.25 298.85</b>	TOWER <b>118.3 239.275</b>	GND CON <b>121.9 348.6</b>	CLNC DEL <b>125.0 379.1</b>
----------------------------	--	-------------------------------	-------------------------------	--------------------------------



EMERG SAFE ALT 100 NM 16,000



ELEV 3962	<b>D</b>	THRE 3962
-----------	----------	-----------



CATEGORY	C	D	E
S-26L	4380-1½	418	(500-1½)
CIRCLING*	4480-1½ 518 (600-1½)	4680-2¼ 718 (800-2¼)	4700-2½ 738 (800-2½)

REIL Rwy 4, 8R  
MIRL Rwy 8L-26R  
HIRL Rwy 4-22 and 8R-26L

EL PASO, TEXAS  
Amdt 4B 03NOV22

31°48'N-106°23'W

EL PASO INTL (KELP)

# HI-VOR or TACAN RWY 26L

SC-3, 28 NOV 2024 to 26 DEC 2024

SC-3, 28 NOV 2024 to 26 DEC 2024