

APP CRS	Rwy Idg	<b>12020</b>
<b>042°</b>	TDZE	<b>3923</b>
	Apt Elev	<b>3962</b>

# RNAV (RNP) Z RWY 4

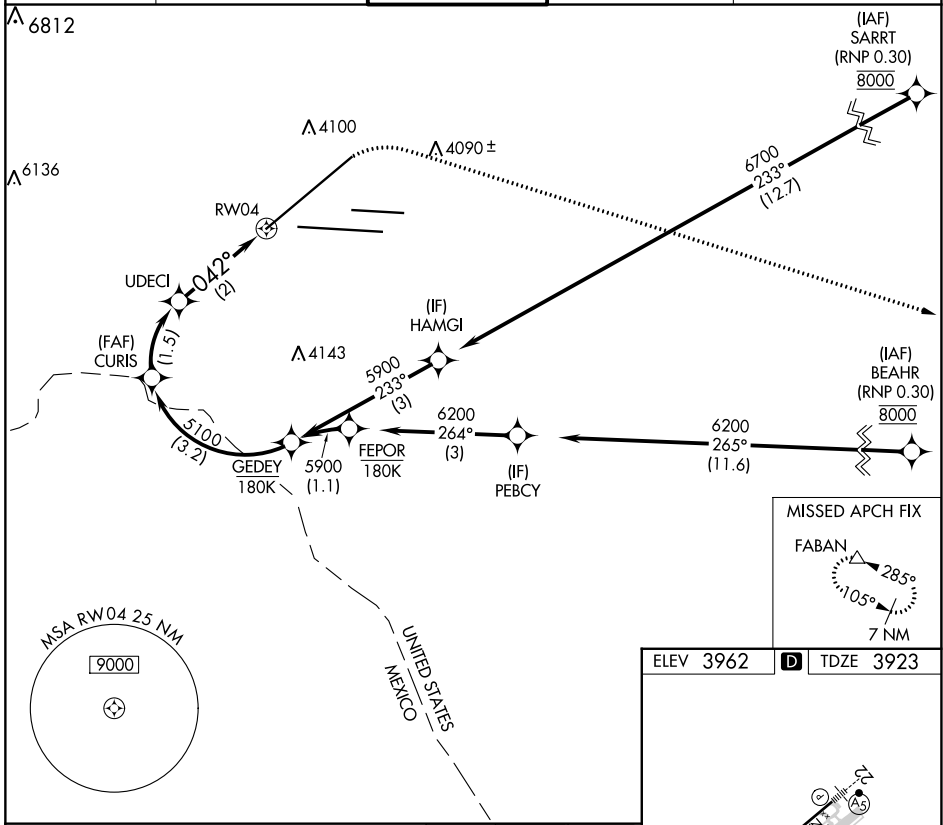
EL PASO INTL (ELP)

RNP AR APCH. RF required.

ASR For uncompensated Baro-VNAV systems, procedure NA below -5°C or above 54°C.

MISSED APPROACH: Climb to 4400 then climbing right turn to 7500 direct FABAN and hold.

D-ATIS	EL PASO APP CON	EL PASO TOWER	GND CON	CLNC DEL
<b>120.0 254.3</b>	<b>124.25 298.85</b>	<b>118.3 239.275</b>	<b>121.9 348.6</b>	<b>125.0 379.1</b>



SC-3, 28 NOV 2024 to 26 DEC 2024

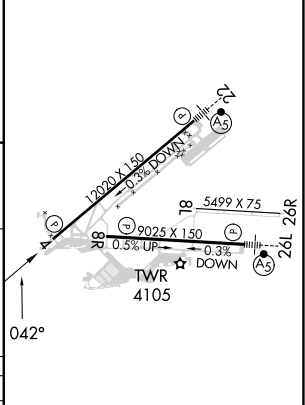
SC-3, 28 NOV 2024 to 26 DEC 2024

ELEV 3962	<b>D</b> TDZE 3923
-----------	--------------------

See planview for multiple IF locations.

GEDEY	4400	7500	FABAN	
5900				
5100				
042°				
3.2 NM	1.5 NM	2 NM		
GP 3.00°				
TCH 55				
CATEGORY	A	B	C	D
RNP 0.20 DA	4282/55		359 (400-1)	
RNP 0.30 DA	4352-1 1/4		429 (400-1 1/4)	

**AUTHORIZATION REQUIRED**



MIRL Rwy 8L-26R  
 REIL Rws 4 and 8R  
 HIRL Rws 4-22 and 8R-26L