

ENID, OKLAHOMA


ILS or LOC RWY 35C

VANCE AFB (KEND)

LOC I-END 110.1	APCH CRS 355°	Rwy Idg TDZE Arprt Elev 9217 1293 1307
---------------------------	-------------------------	--

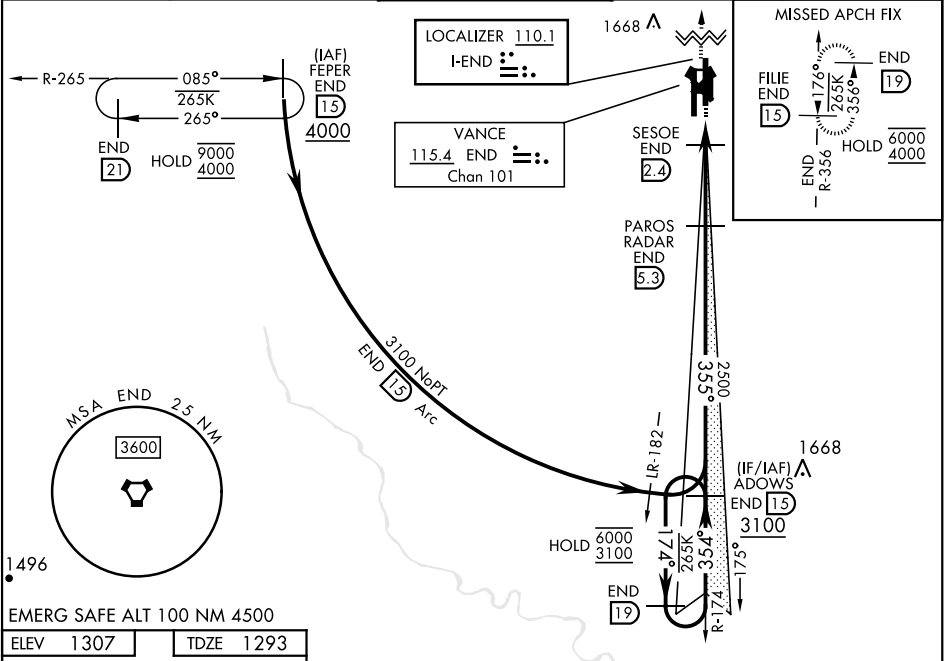
AL-135 [USAF]

RADAR or DME required.

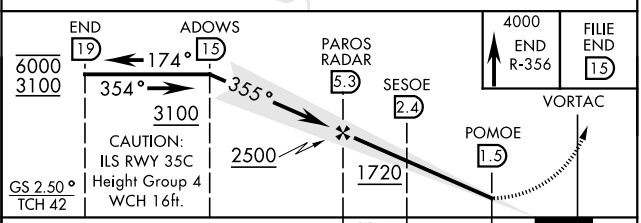
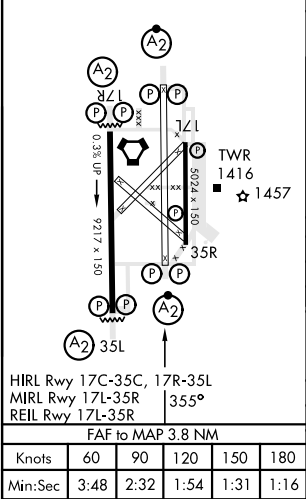
SALS 



MISSED APPROACH: Climb to 4000, intercept END VORTAC R-356 to FILE and hold.

ATIS ★ 115.4 263.15	APP CON 125.45 388.2 EAST 126.75 346.325 WEST	TOWER ★ 124.05 259.1	GND CON 121.675 289.4	CLNC DEL 225.4
-------------------------------	---	--------------------------------	---------------------------------	--------------------------



ELEV 1307	TDZE 1293
-----------	-----------



CATEGORY	A	B	C	D	E
S-ILS 35C	1493/40		200	(200-¾)	
S-LOC 35C*	1640/40		347	(400-¾)	
 CIRCLING	1760-1 453 (500-1)	1800-1½ 493 (500-1½)	1900-2 593 (600-2)	2300-3 993 (1000-3)	
WITHOUT SESOE FIX MINIMUMS					
S-LOC 35C**	1720/40 427 (500-¾)		1720/50 427 (500-1)		
 CIRCLING	1760-1 453 (500-1)	1800-1½ 493 (500-1½)	1900-2 593 (600-2)	2300-3 993 (1000-3)	

ENID, OKLAHOMA

36°20'N-97°55'W

VANCE AFB (KEND)

Amdt 2 24MAR22

ILS or LOC RWY 35C

SC-1, 28 NOV 2024 to 26 DEC 2024

SC-1, 28 NOV 2024 to 26 DEC 2024