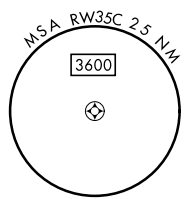
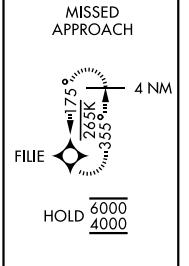
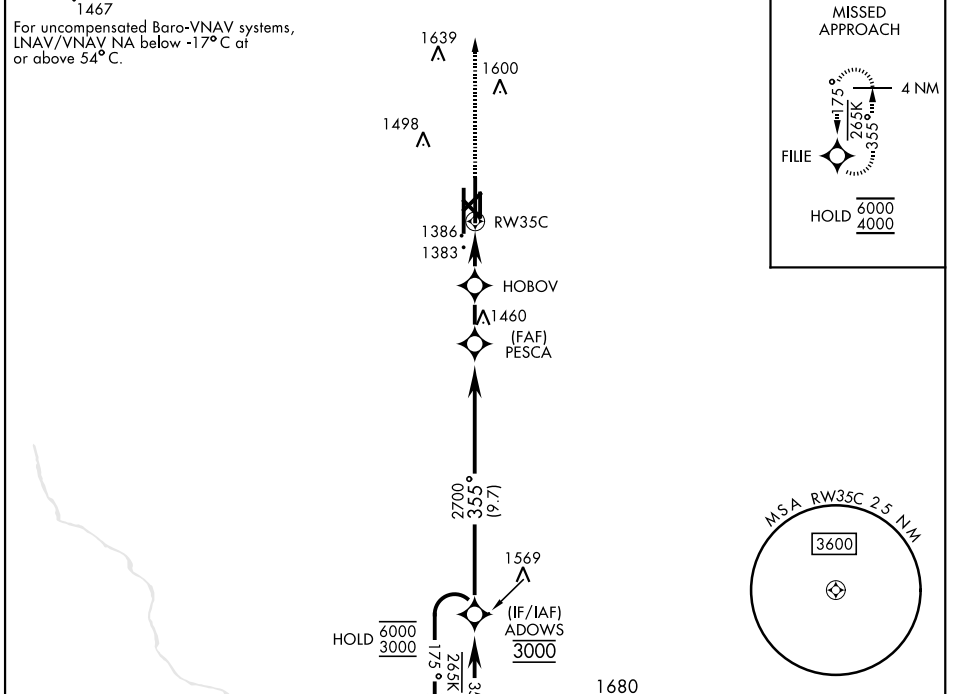


RNAV (GPS) RWY 35C

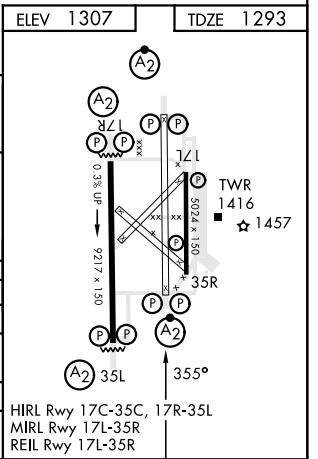
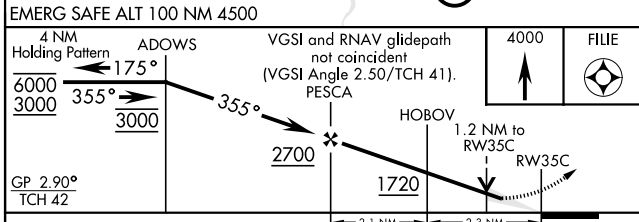
WAAAS Chan 84880 W35A	APCH CRS 355°	Rwy Idg 9217 TDZE 1293 Arprt Elev 1307	AL-135 [USAF]	VANCE AFB (KEND)
---	-------------------------	---	---------------	------------------

RNP APCH	SALSF (A2)	MISSED APPROACH: Climb to 4000 direct FILE and hold.
----------	----------------------	--

ATIS ★ 115.4 263.15	APP CON 125.45 388.2 (E) 126.75 346.325 (W)	TOWER ★ 124.05 259.1	GND CON 121.675 289.4	CLNC DEL 225.4
-------------------------------	---	--------------------------------	---------------------------------	--------------------------



ELEV 1307	TDZE 1293
-----------	-----------



CATEGORY	A	B	C	D	E
LPV DA	1543/40		250	(300-34)	
LNAV/VNAV DA *	1568/40	275	(300-34)		1581/40 288 (300-34)
LNAV MDA **	1660/40		367	(400-34)	
*** CIRCLING	1760-1 453 (500-1)	1800-1 1/2 493 (500-1 1/2)	1900-2 593 (600-2)	2300-3 993 (1000-3)	

HIRL Rwy 17C-35C, 17R-35L
MIRL Rwy 17L-35R
REIL Rwy 17L-35R

RNAV (GPS) RWY 35C

SC-1, 28 NOV 2024 to 26 DEC 2024

SC-1, 28 NOV 2024 to 26 DEC 2024