

# RNAV (GPS) Y RWY 35L

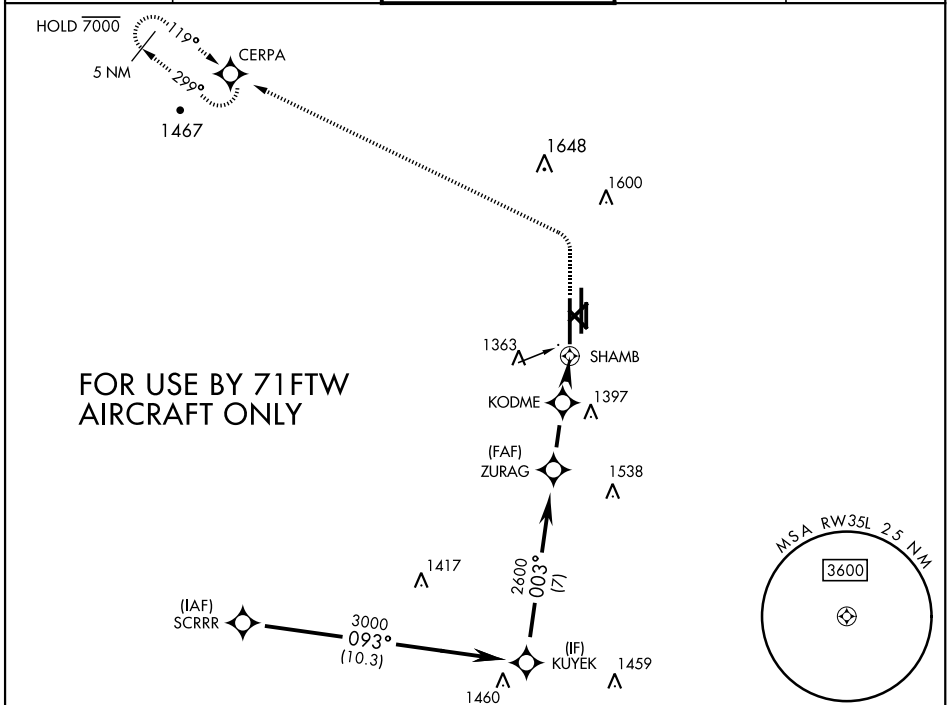
APCH CRS	Rwy ldg	9217
003°	THRE	1307
	Arpt Elev	1307

AL-135 [USAF]

VANCE AFB (KEND)

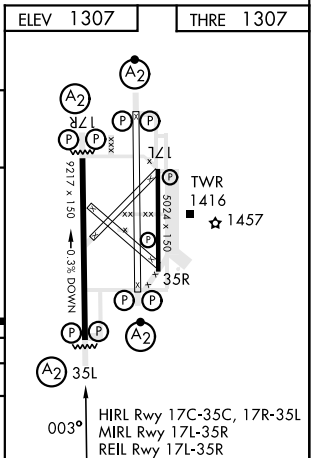
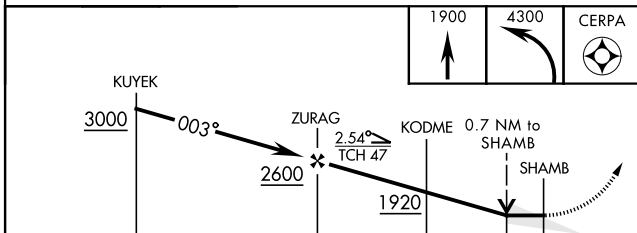
RNP APCH	SALS	MISSED APPROACH: Climb to 1900, then climbing left turn to 4300 direct CERPA and hold.
RADAR required	(A2)	
* When ALS inop, increase vis to 1 mile. Circling visibility reduction by helicopters not authorized.		

ATIS ★ <b>115.4 263.15</b>	APP CON <b>125.45 388.2</b> (E) <b>126.75 346.325</b> (W)	TOWER ★ <b>124.05 259.1</b>	GND CON <b>121.675 289.4</b>	CLNC DEL <b>225.4</b>
-------------------------------	---	--------------------------------	---------------------------------	--------------------------



**FOR USE BY 71FTW AIRCRAFT ONLY**

EMERG SAFE ALT 100 NM 4500



# RNAV (GPS) Y RWY 35L

SC-1, 28 NOV 2024 to 26 DEC 2024

SC-1, 28 NOV 2024 to 26 DEC 2024