

ENID, OKLAHOMA

VOR/DME RWY 35R

VORTAC END 115.4 Chan 101	APCH CRS 342°	Rwy Idg TDZE Arprt Elev 5024 1284 1307
---	-------------------------	--

AL-135 [USAF]

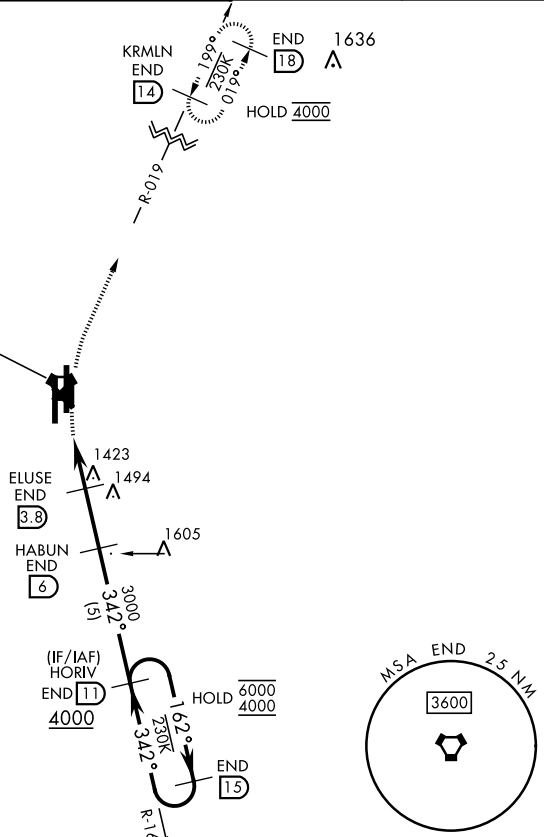
VANCE AFB (KEND)

<p>▼ Visibility reduction by helicopters NA.</p>	<p>MISSED APPROACH: Climbing right turn to 4000 on heading 005°, intercept END VORTAC R-019 to KRMLN and hold.</p>
--	--

<p>ATIS ★ 115.4 263.15</p>	<p>APP CON 125.45 388.2 EAST 126.75 346.325 WEST</p>	<p>TOWER ★ 124.05 259.1</p>	<p>GND CON 121.675 289.4</p>	<p>CLNC DEL 225.4</p>
---------------------------------------	--	--	---	----------------------------------

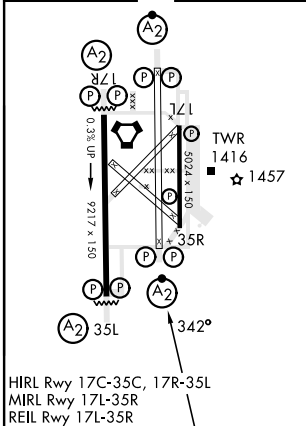
FOR USE BY 71 FTW ACFT ONLY

VANCE
115.4 END ≡:.
Chan 101



EMERG SAFE ALT 100 NM 4500

ELEV 1307	TDZE 1284
-----------	-----------



HIRL Rwy 17C-35C, 17R-35L
MIRL Rwy 17L-35R
REIL Rwy 17L-35R

<p>4000 hdg 005°</p>	<p>END R-019</p>	<p>KRMLN END 14</p>	<p>VGSI and descent angles not coincident (VGSI Angle 3.00/TCH 50).</p>
<p>VORTAC</p>	<p>FIGTU 1.9</p>	<p>ELUSE 3.8</p>	<p>HABUN 6</p>
<p>2280</p>	<p>3.02° TCH 40</p>	<p>3000</p>	<p>HORIV 11</p>
<p>1.1</p>	<p>1.9 NM</p>	<p>2.2 NM</p>	<p>15</p>
<p>162°</p>	<p>342°</p>	<p>342°</p>	<p>6000</p>
<p>4000</p>	<p>4000</p>	<p>4000</p>	<p>4000</p>
<p>CATEGORY</p>	<p>A</p>	<p>B</p>	<p>C</p>
<p>S-35R</p>	<p>1720-1 3/8 436</p>	<p>(500-1 3/8)</p>	<p>NA</p>
<p>CIRCLING</p>	<p>1760-1 3/8 453</p>	<p>(500-1 3/8)</p>	<p>NA</p>

ENID, OKLAHOMA

36°20'N-97°55'W

VANCE AFB (KEND)

Orig 24MAR22

VOR/DME RWY 35R

SC-1, 28 NOV 2024 to 26 DEC 2024

SC-1, 28 NOV 2024 to 26 DEC 2024