


LOC I-PAE 109.3	APP CRS 163°	Rwy Idg 9010
		TDZE 570
		Apt Elev 608

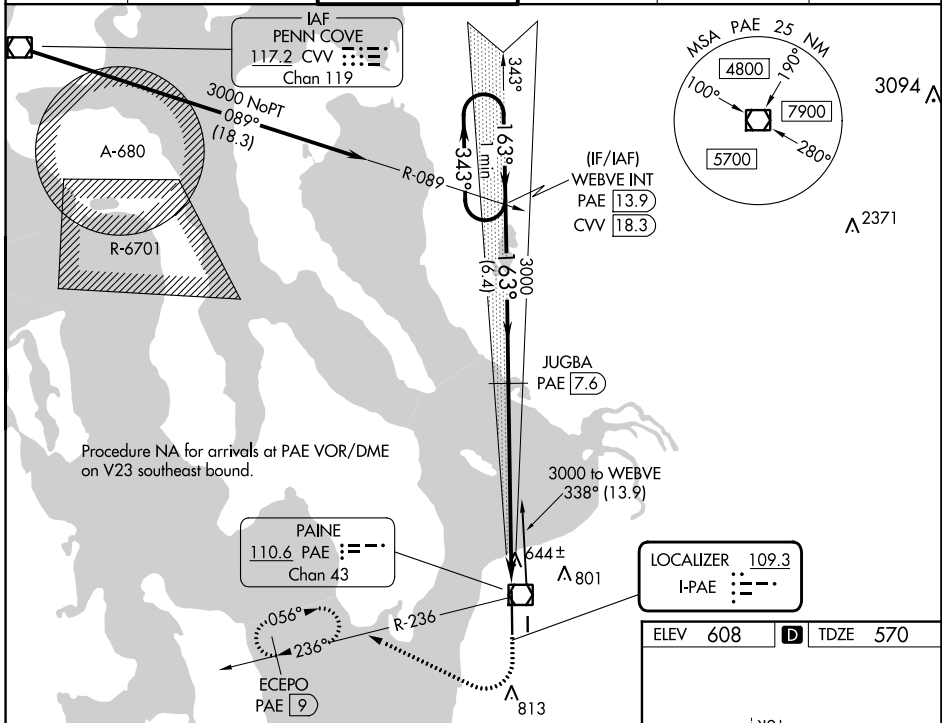
ILS Z RWY 16R (SA CAT II)

SEATTLE PAINE FLD INTL (PAE)

▼ DME required. Reduced Lighting: Requires specific OPSPEC, MSPEC, or LOA approval and use of autoland or HUD to touchdown.
▲ DME from PAE VOR/DME. Simultaneous reception of I-PAE and PAE DME required. Procedure NA when control tower closed.

MALSR  MISSED APPROACH: Climb to 1100 then climbing right turn to 3000 on heading 280° and PAE VOR/DME R-236 to ECEPO/PAE 9 DME and hold, continue climb-in-hold to 3000.

ATIS 128.65	SEATTLE APP CON 128.5 306.9	PAINE TOWER ★ 132.95 (CTAF) 0 256.7	GND CON 121.8 339.8	CLNC DEL 127.175	UNICOM 122.95
-----------------------	---------------------------------------	---	-------------------------------	----------------------------	-------------------------



VGSI and ILS glidepath not coincident (VGSI Angle 3.00/TCH 74).

One Minute Holding Pattern

WEBVE INT
PAE 13.9

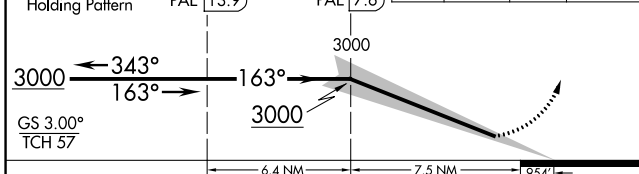
JUGBA
PAE 7.6

1100 3000

PAE R-236

ECEPO
PAE 9

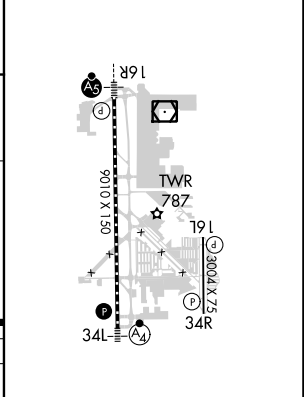
hdg 280°

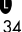


CATEGORY	A	B	C	D
S-ILS 16R	RA 116/12 100 DA 670			

SA CATEGORY II ILS-SPECIAL AIRCREW & AIRCRAFT CERTIFICATION REQUIRED

ELEV 608	D TDZE 570
----------	-------------------



TDZ/CL Rwy 16R
 HIRL Rwy 16R-34L 
 REIL Rws 16L and 34R
 MIRL Rwy 16L-34R

NW-1, 28 NOV 2024 to 26 DEC 2024

NW-1, 28 NOV 2024 to 26 DEC 2024