

LOC I-PAE 109.3	APP CRS 163°	Rwy Idg TDZE Apt Elev	9010 570 608
---------------------------	------------------------	-----------------------------	---

ILS Z or LOC Z RWY 16R

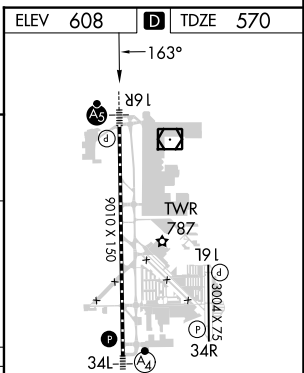
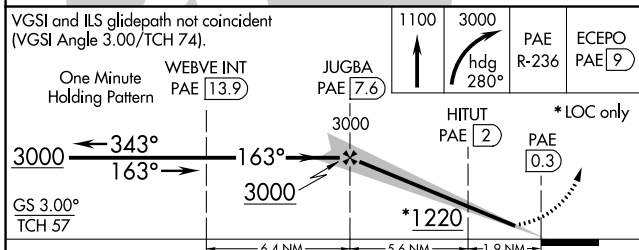
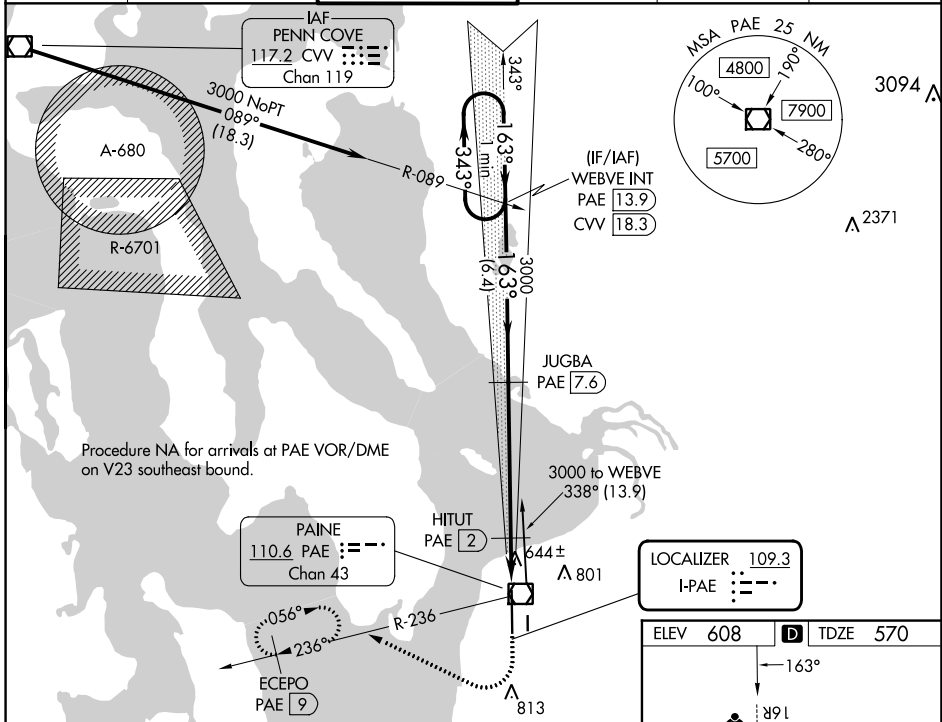
SEATTLE PAINE FLD INTL (P.A.E.)

⚠ Circling Rwy 34R NA at night. DME required. For inop ALS, increase S-LOC 16R Cats C/D visibility to RVR 5500. DME from PAE VOR/DME. Simultaneous reception of I-PAE and PAE DME required.



MISSED APPROACH: Climb to 1100 then climbing right turn to 3000 on heading 280° and PAE VOR/DME R-236 to ECEPO/PAE 9 DME and hold, continue climb-in-hold to 3000.

ATIS 128.65	SEATTLE APP CON 128.5 306.9	PAINE TOWER * 132.95 (CTAF) 0 256.7	GND CON 121.8 339.8	CLNC DEL 127.175	UNICOM 122.95
-----------------------	---------------------------------------	---	-------------------------------	----------------------------	-------------------------



CATEGORY	A	B	C	D
S-ILS 16R	770/18 200 (200-½)			
S-LOC 16R	940/24	370 (400-½)	940/35	370 (400-¾)
C CIRCLING	1100-1	492 (500-1)	1120-1½	512 (600-1½)
			1160-2	552 (600-2)

TDZ/CL Rwy 16R
HIRL Rwy 16R-34L
REIL Rws 16L and 34R
MIRL Rwy 16L-34R

NW-1, 28 NOV 2024 to 26 DEC 2024

NW-1, 28 NOV 2024 to 26 DEC 2024