

# ILS or LOC RWY 9

FLORENCE RGNL (FLO)

LOC/DME I-FLO <b>109.1</b> Chan 28	APP CRS <b>093°</b>	Rwy Idg TDZE Apt Elev	<b>6502</b> <b>147</b> <b>147</b>
--	------------------------	-----------------------------	---

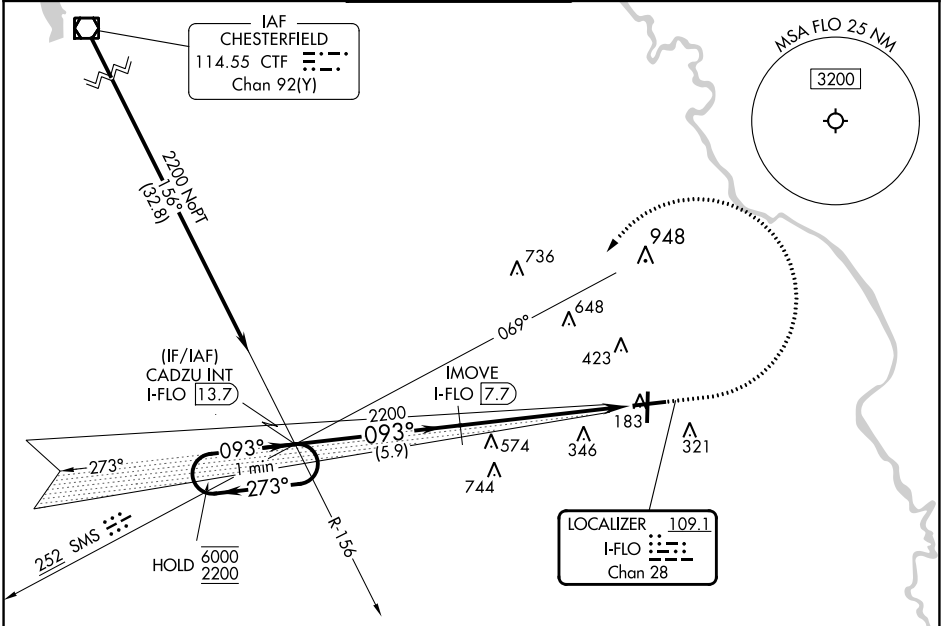
DME required. ADF required.

**⚠** Circling Rwy 1, 19 NA at night.

**MALS**

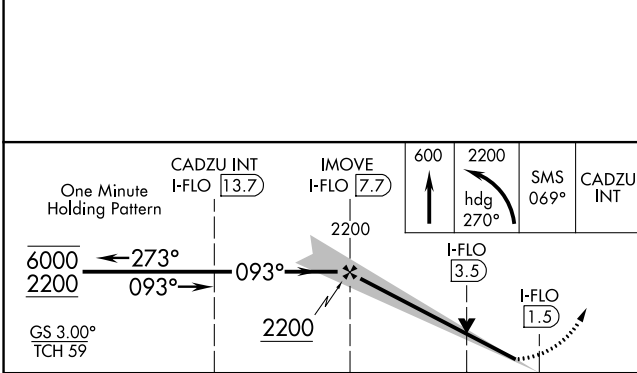
**MISSED APPROACH:** Climb to 600 then climbing left turn to 2200 on heading 270° and on SMS NDB BRG-069 to CADZU INT/I-FLO 13.7 DME and hold.

ATIS <b>123.625</b>	FLORENCE APP CON* <b>118.6 341.7</b> (256°-074°) <b>135.25 316.15</b> (075°-255°)	FLORENCE TOWER* <b>125.1 (CTAF) 0 353.85</b>	GND CON <b>121.9 353.85</b>	CLNC DEL <b>121.9 353.85</b>	UNICOM <b>122.95</b>
------------------------	---	---	--------------------------------	---------------------------------	-------------------------

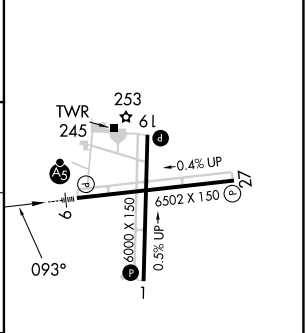


SE-2, 28 NOV 2024 to 26 DEC 2024

SE-2, 28 NOV 2024 to 26 DEC 2024



ELEV 147	TDZE 147
----------	----------



CATEGORY	A	B	C	D
S-ILS 9	347-1/2 200 (200-1/2)			
S-LOC 9	860-1/2	713 (800-1/2)	860-1 5/8	713 (800-1 5/8)
CIRCLING	860-1	713 (800-1)	900-2 1/4	900-2 1/2
			753 (800-2 1/4)	753 (800-2 1/2)

REIL Rwy 1, 19 and 27  
HIRL Rwy 9-27  
MIRL Rwy 1-19