

WRIGHTSTOWN, NEW JERSEY

VOR/DME or TACAN RWY 24

VORTAC GXU 110.6 Chan 43	APCH CRS 243°	Rwy Idg TDZE Arprt Elev	10,014 117 141
---------------------------------------	-------------------------	-------------------------------	---

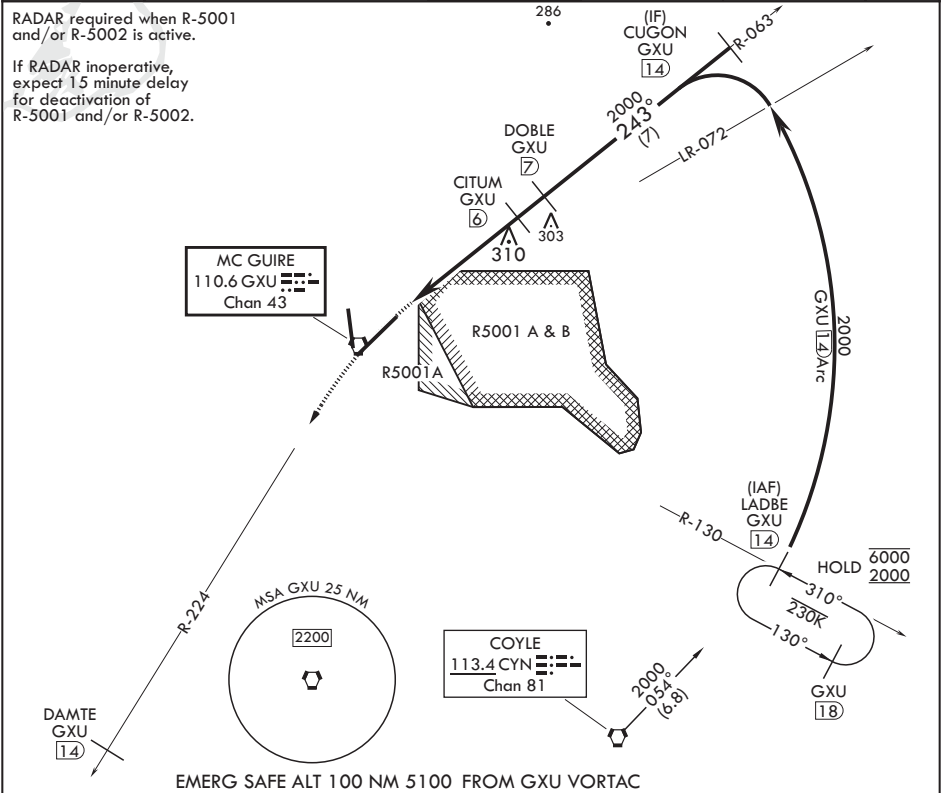
AL-150 (USAF)
MC GUIRE FIELD (JOINT BASE MC GUIRE DIX LAKEHURST) (KWRI)

V * When ALS inop, increase CAT AB RVR to 55 and vis to 1 mile, CAT CDE vis to 1 1/2 miles.
 ** Circling NA SE of Rwy 24 and E of Rwy 36 when R-5001 A/B Active.

ALSF-1 MISSED APPROACH: Climb to 2000 via GXU R-224 to DAMTE, Expect further clearance from ATC.

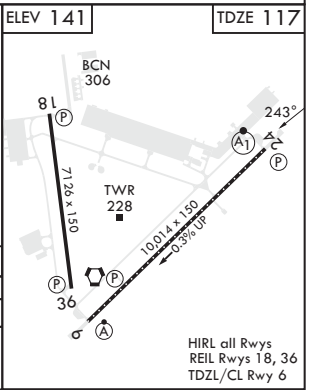
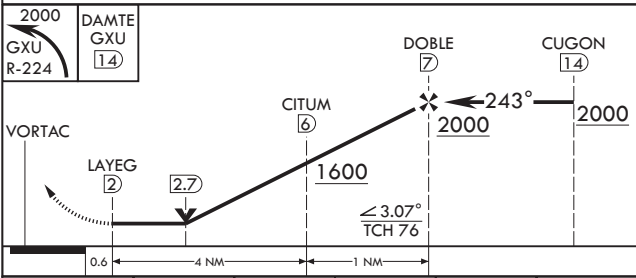
ATIS 110.6 270.1	MC GUIRE APP CON/DEP CON 126.475 363.8	TOWER 118.65 255.6	GND CON 121.8 275.8	CLNC DEL 135.2 335.8	PAR
----------------------------	--	------------------------------	-------------------------------	--------------------------------	-----

RADAR required when R-5001 and/or R-5002 is active.
 If RADAR inoperative, expect 1.5 minute delay for deactivation of R-5001 and/or R-5002.



NE-2, 28 NOV 2024 to 26 DEC 2024

NE-2, 28 NOV 2024 to 26 DEC 2024



CATEGORY	A	B	C	D	E
S-24*	640/24 523 (500-½)	640/55 523 (500-1)	640/55 523 (500-1)	640/55 523 (500-1)	640/55 523 (500-1)
C CIRCLING**	680-1 539 (600-1)	700-1½ 559 (600-1½)	700-2 559 (600-2)	1200-3 1059 (1100-3)	1200-3 1059 (1100-3)

HIRL all Rwys
 REIL Rwy 18, 36
 TDZL/CL Rwy 6

WRIGHTSTOWN, NEW JERSEY
 Amdt 8 18MAY23

MC GUIRE FIELD (JOINT BASE MC GUIRE DIX LAKEHURST) (KWRI)
 40°01'N - 74°36'W
VOR/DME or TACAN RWY 24