

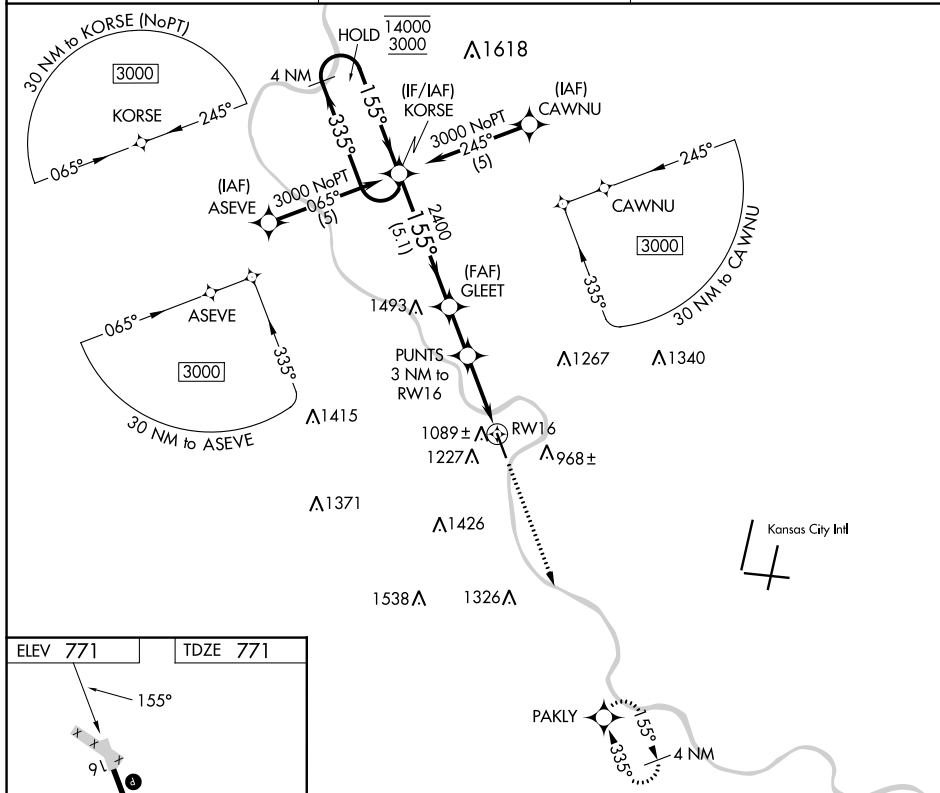
APP CRS	Rwy Idg	5318
155°	TDZE	771
	Apt Elev	771

RNAV (GPS) RWY 16

SHERMAN AAF (FLV)

RNP APCH - GPS.	MISSED APPROACH: Climb to 3100 direct PAKLY and hold.
<p>⚠ Circling NA west of Rwy 16-34. Procedure NA at night. Rwy 16 helicopter visibility reduction below 1 SM NA. Use Kansas City Intl altimeter setting.</p>	

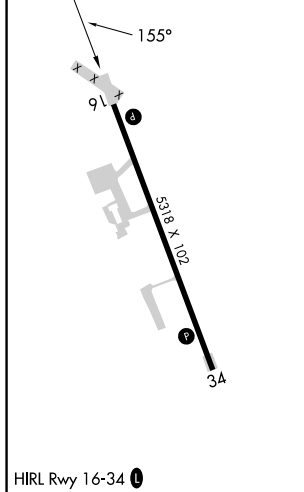
MCI ASOS 128.375	KANSAS CITY APP CON 124.7 284.7	CTAF 126.20
----------------------------	---	-----------------------



NC-2, 28 NOV 2024 to 26 DEC 2024

NC-2, 28 NOV 2024 to 26 DEC 2024

ELEV 771	TDZE 771
-----------------	-----------------



4 NM Holding Pattern	VGSI and descent angles not coincident (VGSI Angle 3.00/TCH 40).		3100	PAKLY
1400 3000	← 335° → 155°	155°	GLEET 2400	PUNTS 3 NM to RWY16
			3.04° TCH 50	1780
	← 5.1 NM	← 1.9 NM	← 3 NM	RWY16
CATEGORY	A	B	C	D
LNAV MDA	1520-1 749 (800-1)	1520-1¼ 749 (800-1¼)	1520-2 749 (800-2)	NA
C CIRCLING	1520-1 749 (800-1)	1520-1¼ 749 (800-1¼)	1520-2¼ 749 (800-2¼)	NA