

WAAS CH <b>69220</b> <b>W13A</b>	APP CRS <b>133°</b>	Rwy Idg TDZE Apt Elev	<b>2623</b> <b>836</b> <b>836</b>
--	------------------------	-----------------------------	---

# RNAV (GPS) RWY 13

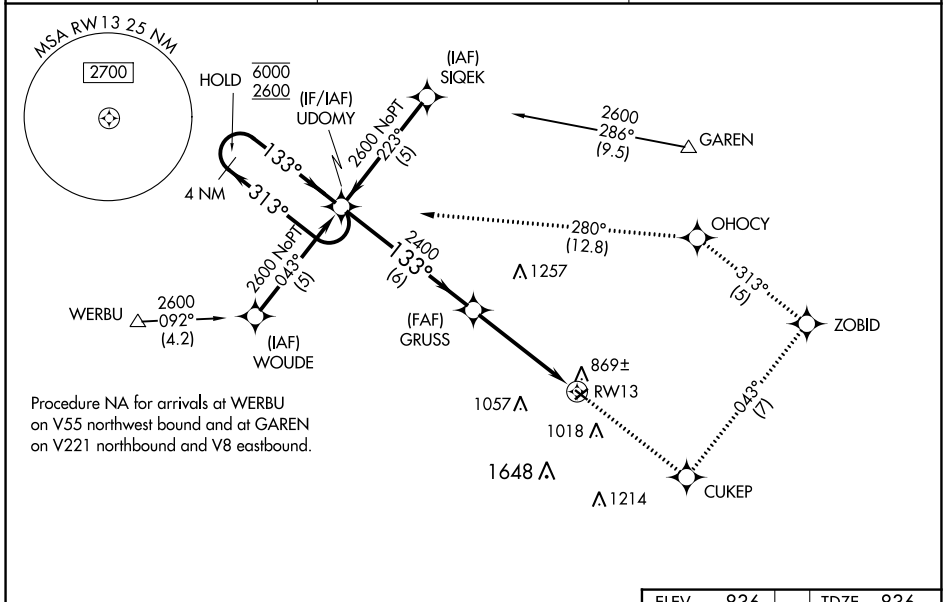
SMITH FLD (SMD)

RNP APCH.

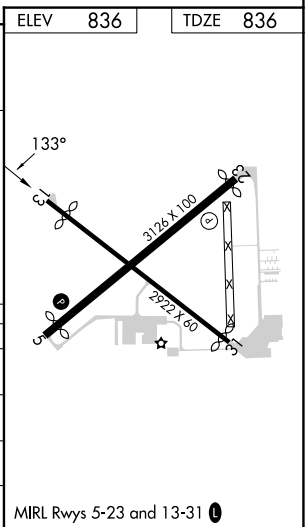
Procedure NA at night. Rwy 13 helicopter visibility reduction below 1 SM NA.  
 For uncompensated Baro-VNAV systems, LNAV/VNAV NA below -1.6°C or above 5.4°C. When local altimeter setting not received, use Fort Wayne Intl altimeter setting:  
 -22°C increase LPV DA to 1162 feet; LNAV/VNAV DA to 1435 feet; increase all MDA 40 feet and LNAV Cat C visibility ¼ SM. Baro-VNAV NA when using Fort Wayne Intl altimeter setting.

MISSED APPROACH: Climb to 2600 direct CUKEP and on track 043° to ZOBID and on track 313° to OHOCY and on track 280° to UDOMY and hold.

AWOS-3 <b>124.55</b>	FORT WAYNE APP CON <b>127.2 284.6</b>	UNICOM <b>122.8 (CTAF)</b>
-------------------------	--	-------------------------------



	2600	CUKEP	ZOBID	OHOCY	UDOMY
	↑	✧	✧	✧	✧
		tr 043°	tr 313°	tr 280°	
4 NM Holding Pattern	UDOMY				
6000 ← 313°	GRUSS				
2600 → 133°	2400				
GP 3.00° TCH 40	RW13				
	6 NM		4.7 NM		
CATEGORY	A	B	C	D	
LPV DA	1135-1		299 (300-1)		NA
LNAV/VNAV DA	1408-2		572 (600-2)		NA
LNAV MDA	1340-1	504 (600-1)		1340-1½ 504 (600-1½)	
CIRCLING	1400-1	564 (600-1)		1940-3 1104 (1200-3)	



EC-2, 28 NOV 2024 to 26 DEC 2024

EC-2, 28 NOV 2024 to 26 DEC 2024