

KUSSO ONE DEPARTURE (RNAV)

FORT WORTH, TEXAS

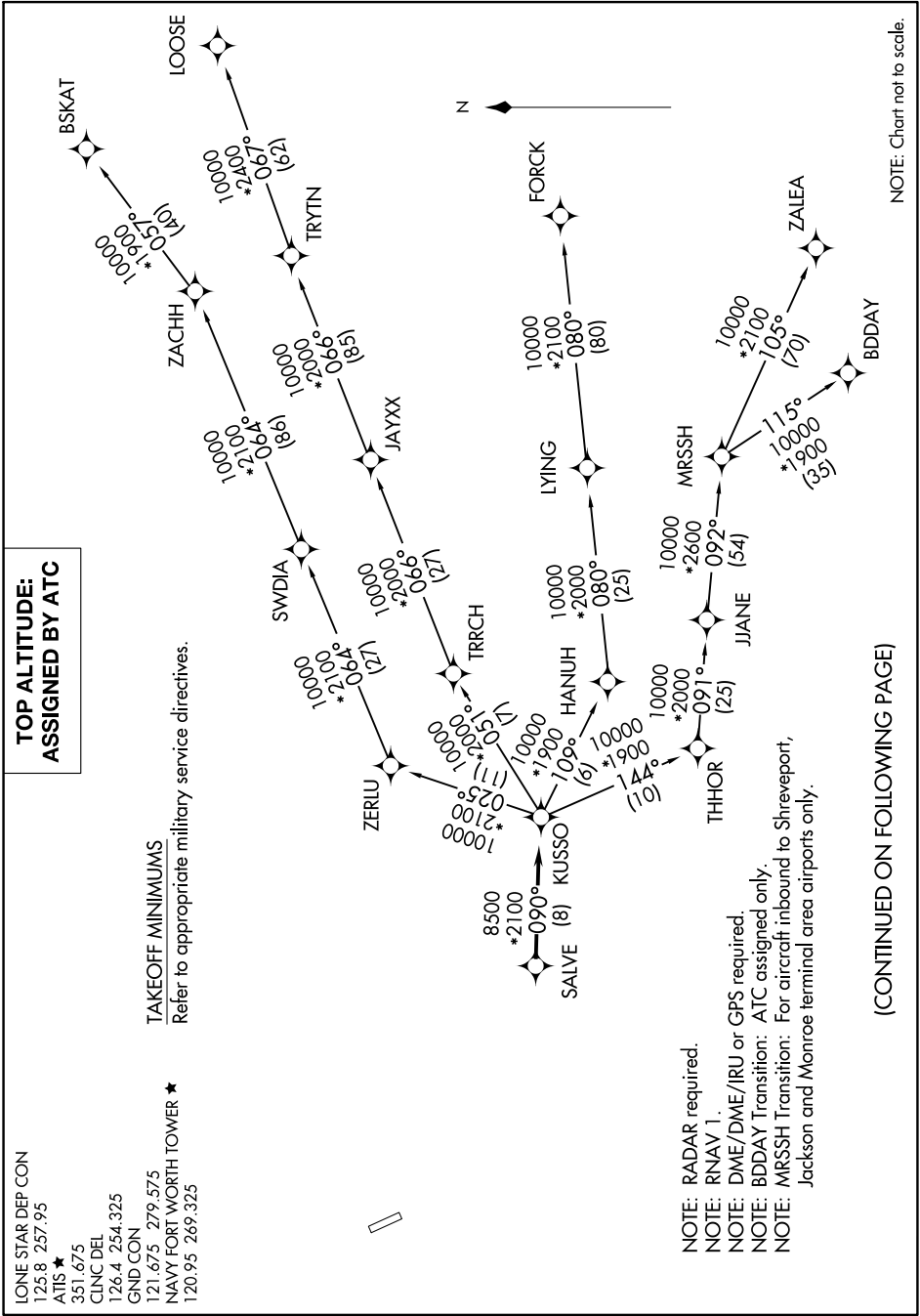
SC-2, 28 NOV 2024 to 26 DEC 2024

**TOP ALTITUDE:
ASSIGNED BY ATC**

LONE STAR DEP CON
125.8 257.95
ATIS ★
351.675
CLINC DEL
126.4 254.325
GND CON
121.675 279.575
NAVY FORT WORTH TOWER ★
120.95 269.325

TAKEOFF MINIMUMS

Refer to appropriate military service directives.



NOTE: RADAR required.
NOTE: RNAV 1.
NOTE: DME/DME/IRU or GPS required.
NOTE: BDDAY Transition: ATC assigned only.
NOTE: MRSSH Transition: For aircraft inbound to Shreveport, Jackson and Monroe terminal area airports only.

(CONTINUED ON FOLLOWING PAGE)

NOTE: Chart not to scale.

SC-2, 28 NOV 2024 to 26 DEC 2024