

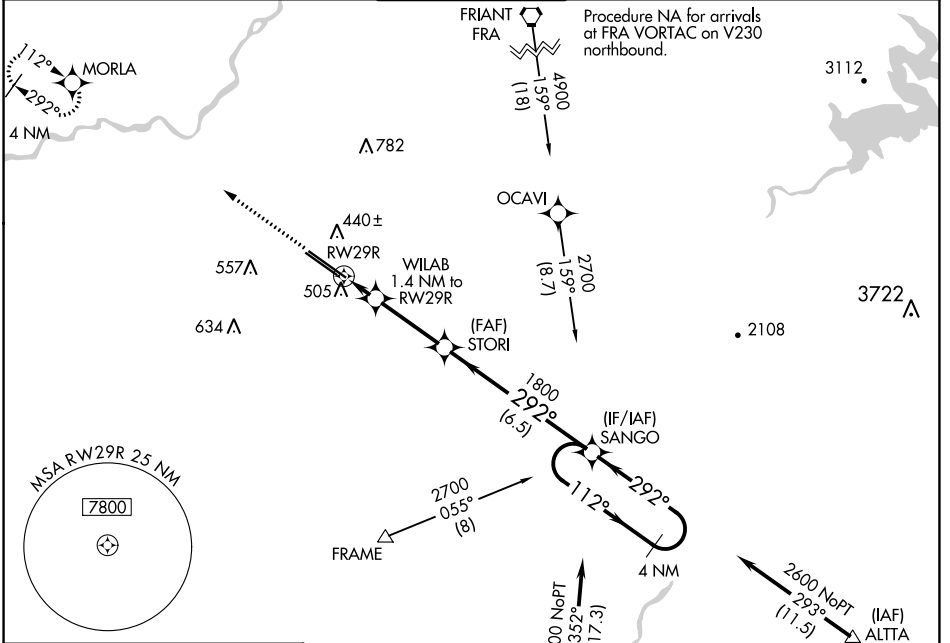
WAAS CH 81803 W29A	APP CRS 292°	Rwy Idg TDZE Apt Elev	9227 333 336
---------------------------------	------------------------	-----------------------------	---

RNAV (GPS) RWY 29R

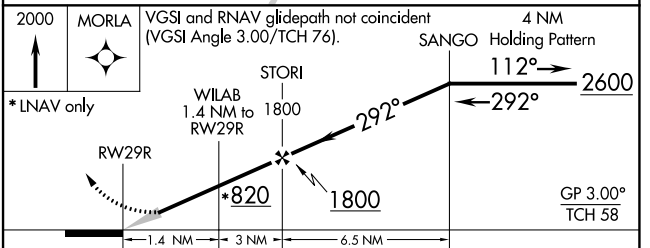
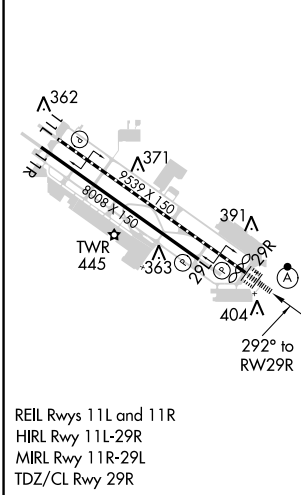
FRESNO YOSEMITE INTL (FAT)

For uncompensated Baro-VNAV systems, LNAV/VNAV NA below 0°C (32°F) or above 54°C (130°F). DME/DME RNP-0.3 NA.	ALSF-2 	MISSED APPROACH: Climb to 2000 direct MORLA and hold.

ATIS 121.35 273.6	FRESNO APP CON 119.6 351.95	FRESNO TOWER 118.2 251.1	GND CON 121.7 348.6	CLNC DEL 124.35 348.6
-----------------------------	---------------------------------------	------------------------------------	-------------------------------	---------------------------------



ELEV 336	D	TDZE 333
----------	----------	----------



2000 MORLA	VGSI and RNAV glidepath not coincident (VGSI Angle 3.00/TCH 76).		4 NM	
*LNAV only	WILAB 1.4 NM to RWY 29R	STORI 1800	SANGO Holding Pattern	
	RWY 29R	1800	2600	
	1.4 NM	3 NM	6.5 NM	
GP 3.00° TCH 58				
CATEGORY	A	B	C	D
LPV DA		533/18	200 (200-½)	
LNAV/VNAV DA		689/30	356 (400-¾)	
LNAV MDA	760/24	427 (500-½)	760/40	427 (500-¾)
C CIRCLING	820-1	484 (500-1)	920-1½	920-2
			584 (600-1½)	584 (600-2)

SW-2, 28 NOV 2024 to 26 DEC 2024

SW-2, 28 NOV 2024 to 26 DEC 2024