

TACAN CZQ Chan <b>76</b> <b>(112.9)</b>	APP CRS <b>131°</b>	Rwy Idg TDZE Aprt Elev	11L <b>9279</b> <b>336</b> <b>336</b>	11R <b>8008</b> <b>333</b> <b>336</b>
---	------------------------	------------------------------	--	--

# TACAN RWY 11L

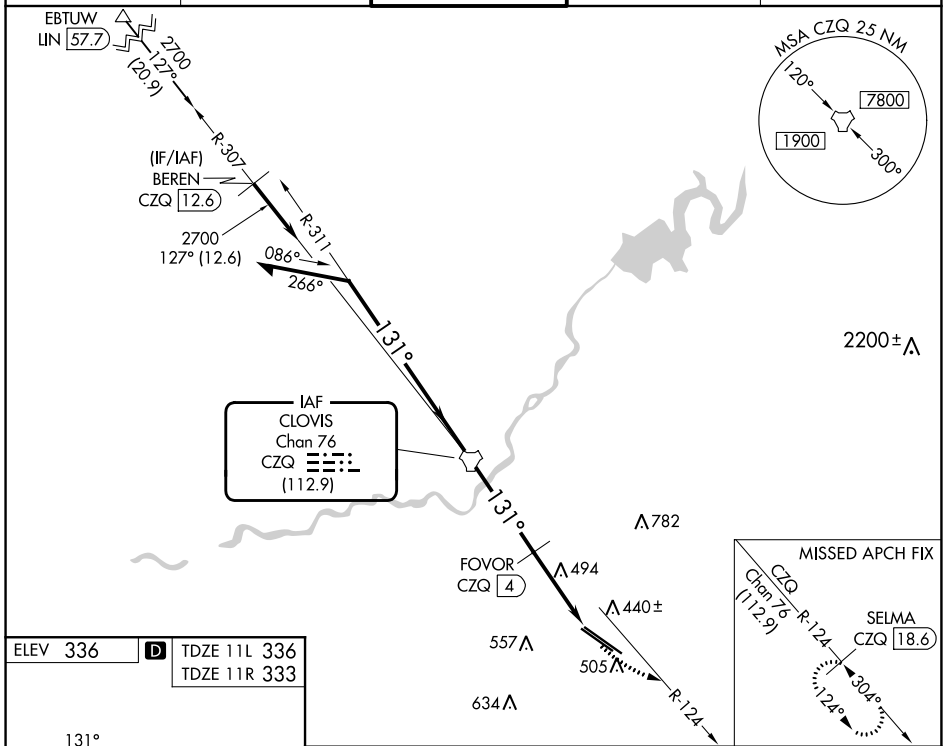
FRESNO YOSEMITE INTL (FAT)

DME required.

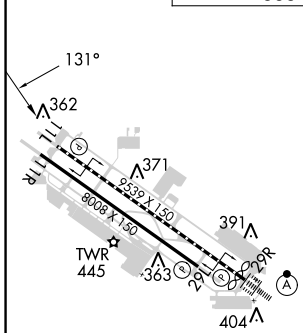
⚠ MISSED APPROACH: Climbing left turn to 2000 on CZQ TACAN R-124 to SELMA/CZQ 18.6 DME and hold.

⚠ Rwy 11L helicopter visibility reduction below 3/4 SM NA.

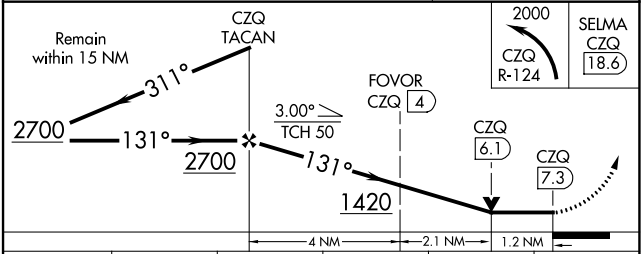
ATIS <b>121.35 273.6</b>	FRESNO APP CON <b>119.6 351.95</b>	FRESNO TOWER <b>118.2 251.1</b>	GND CON <b>121.7 348.6</b>	CLNC DEL <b>124.35 348.6</b>
-----------------------------	---------------------------------------	------------------------------------	-------------------------------	---------------------------------



ELEV 336	D TDZE 11L 336	TDZE 11R 333
----------	----------------	--------------



REIL Rwy 11L and 11R  
HIRL Rwy 11L-29R  
MIRL Rwy 11R-29L  
TDZ/CL Rwy 29R



CATEGORY	A	B	C	D	E
S-11L	760/55	424 (500-1)	760-1¼ 424 (500-1¼)		
SIDESTEP 11R	760-1	427 (500-1)	760-1½ 427 (500-1½)	760-2 427 (500-2)	
CIRCLING	820-1	484 (500-1)	920-1½ 584 (600-1½)	920-2 584 (600-2)	1140-2¾ 804 (900-2¾)

SW-2, 28 NOV 2024 to 26 DEC 2024

SW-2, 28 NOV 2024 to 26 DEC 2024