

TACAN CZQ Chan <b>76</b> <b>(112.9)</b>	APP CRS <b>307°</b>	Rwy Idg TDZE Apt Elev	29R <b>9227</b> <b>333</b> <b>336</b>	29L <b>8008</b> <b>331</b> <b>336</b>
---	------------------------	-----------------------------	--	--

# TACAN RWY 29R

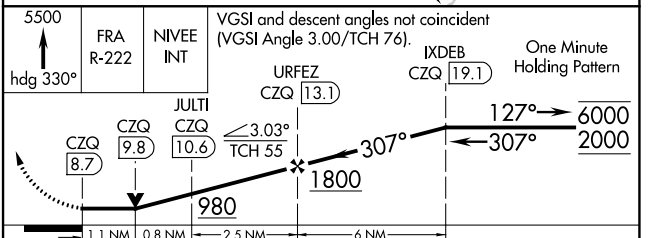
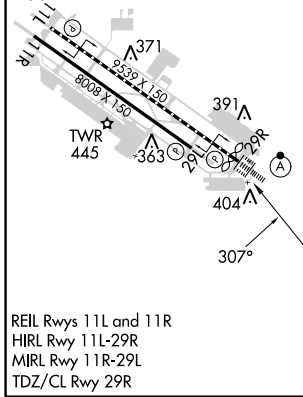
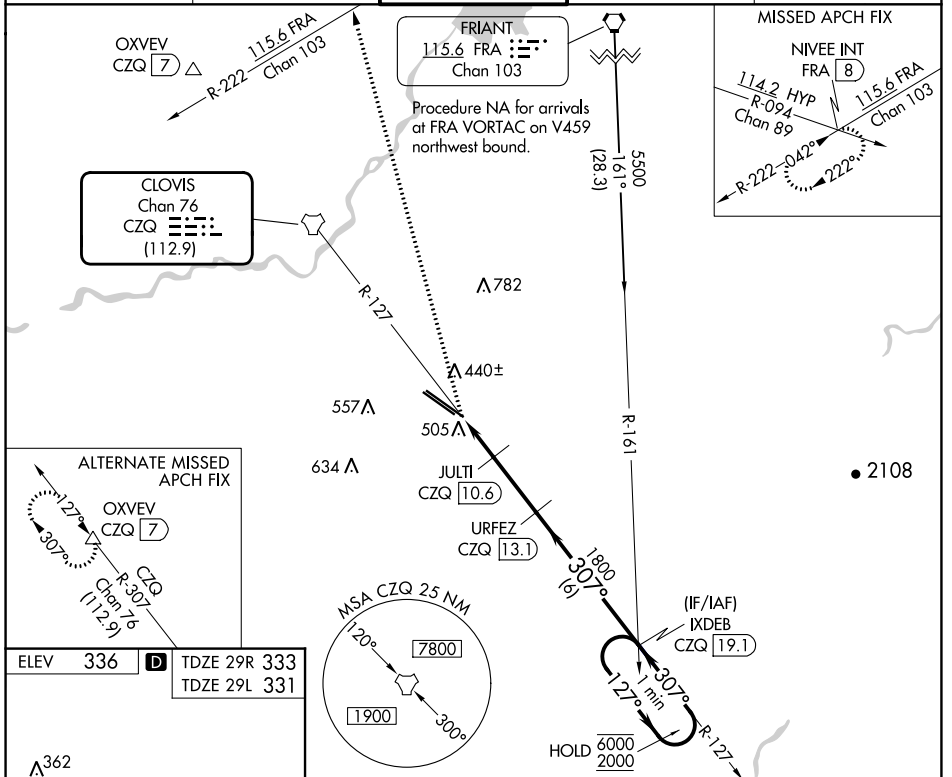
FRESNO YOSEMITE INTL (FAT)

**▼** Rwy 29R helicopter visibility reduction below RVR 4000 NA.  
**▲** For inop ALS, increase S-29R Cat A/B visibility to RVR 5500 and Cat E visibility to 1 1/4 mile.

ALS-F-2 Rwy 29R

MISSED APPROACH: Climb to 5500 on heading 330° and FRA VORTAC R-222 to NIVEE INT/FRA 8 DME and hold, continue climb-in-hold to 5500.

ATIS <b>121.35 273.6</b>	FRESNO APP CON <b>119.6 351.95</b>	FRESNO TOWER <b>118.2 251.1</b>	GND CON <b>121.7 348.6</b>	CLNC DEL <b>124.35 348.6</b>
-----------------------------	---------------------------------------	------------------------------------	-------------------------------	---------------------------------



CATEGORY	A	B	C	D	E
S-29R	760/40 427 (500-3/4)				
SIDESTEP 29L	760/55 429 (500-1)	760-1 1/2 429 (500-1 1/2)	760-2 429 (500-2)		
<b>C</b> CIRCLING	820-1 484 (500-1)	920-1 1/2 584 (600-1 1/2)	920-2 584 (600-2)	1140-2 3/4 804 (900-2 3/4)	

SW-2, 28 NOV 2024 to 26 DEC 2024

SW-2, 28 NOV 2024 to 26 DEC 2024