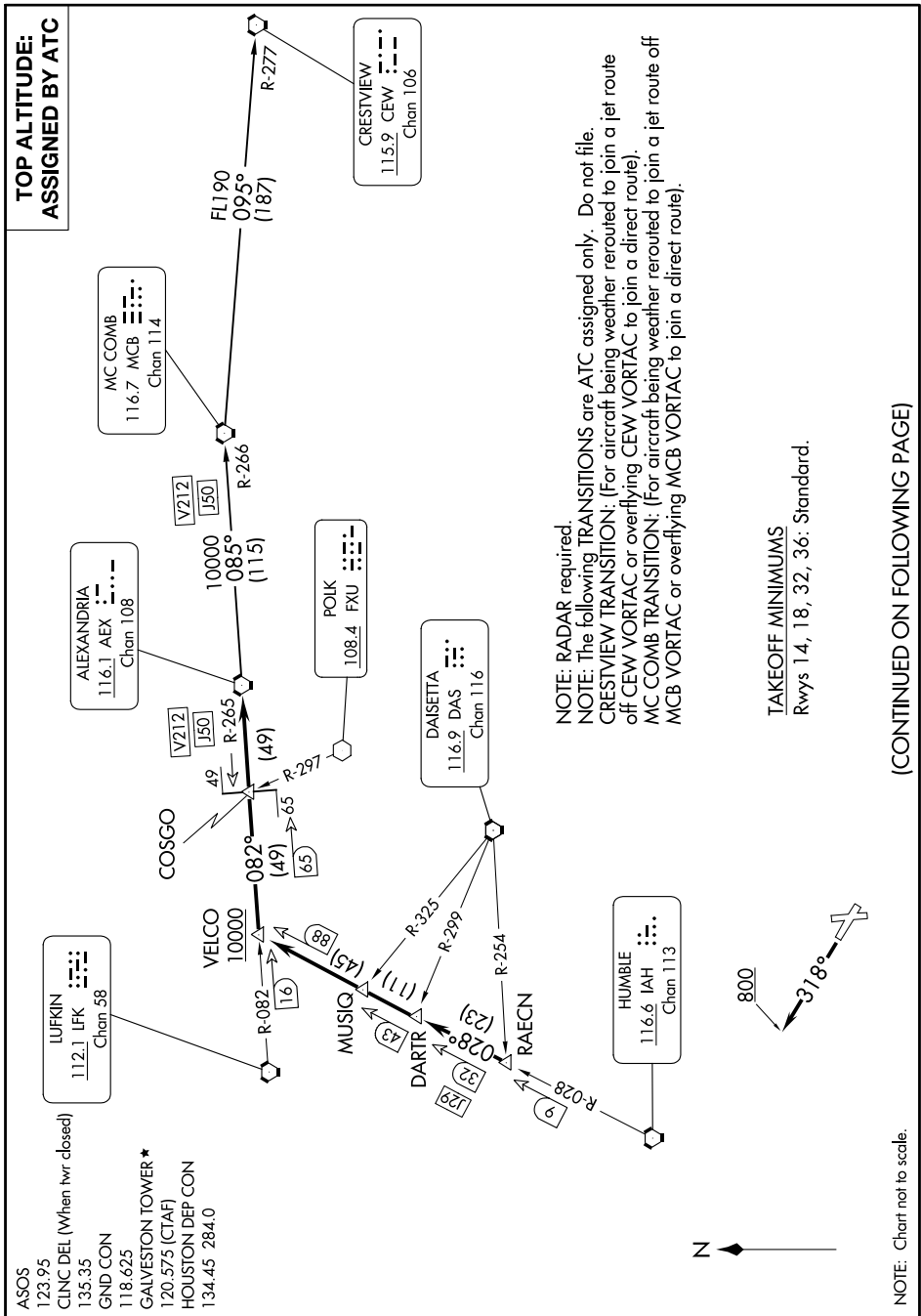


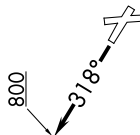
ALEXANDRIA THREE DEPARTURE

SC-5, 28 NOV 2024 to 26 DEC 2024



**TOP ALTITUDE:
ASSIGNED BY ATC**

- ASOS 123.95
- CLNC DEL (When twr closed) 135.35
- GND CON 118.625
- GALVESTON TOWER ★ 120.575 (CTAF)
- HOUSTON DEP CON 134.45 284.0



NOTE: RADAR required.
NOTE: The following TRANSITIONS are ATC assigned only. Do not file.
CRESTVIEW TRANSITION: (For aircraft being weather rerouted to join a jet route off CEW VORTAC or overflying CEW VORTAC to join a direct route).
MC COMB TRANSITION: (For aircraft being weather rerouted to join a jet route off MCB VORTAC or overflying MCB VORTAC to join a direct route).

TAKEOFF MINIMUMS
 Rwy 14, 18, 32, 36: Standard.

(CONTINUED ON FOLLOWING PAGE)

NOTE: Chart not to scale.

ALEXANDRIA THREE DEPARTURE