

(INDIE8.INDIE) 22307

AL-164 (FAA)

SCHOLES INTL AT GALVESTON (GLS)
GALVESTON, TEXAS

INDIE EIGHT DEPARTURE (RNAV)

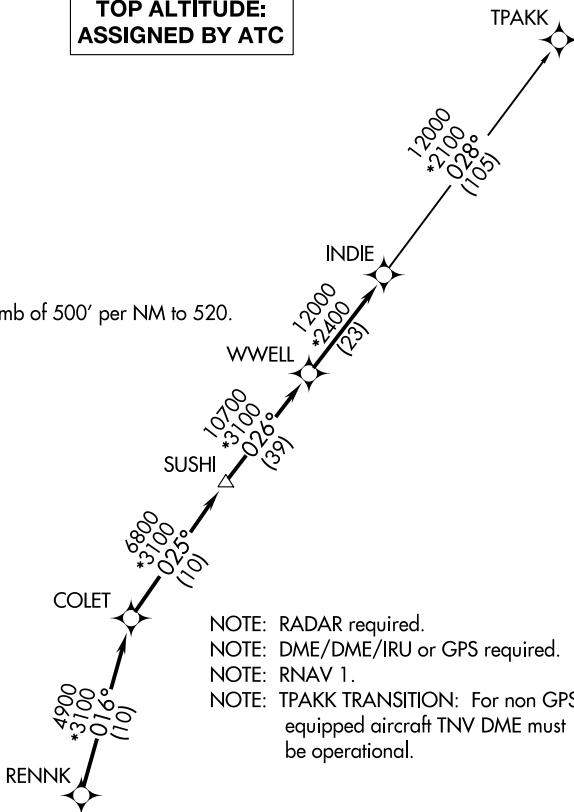
ASOS
123.95
CLNC DEL
135.35 (when twr closed)
GND CON
118.625
GALVESTON TOWER ★
120.575 (CTAF)
HOUSTON DEP CON
134.45 284.0

**TOP ALTITUDE:
ASSIGNED BY ATC**

TPAKK

TAKEOFF MINIMUMS

Rwys 14, 18, 32, 36:
Standard with minimum climb of 500' per NM to 520.



SC-5, 28 NOV 2024 to 26 DEC 2024

SC-5, 28 NOV 2024 to 26 DEC 2024

DEPARTURE ROUTE DESCRIPTION

TAKEOFF RUNWAY 14: Climb on heading 138° to 520 for RADAR vectors to RENNK, thence . . .

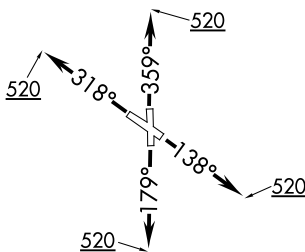
TAKEOFF RUNWAY 18: Climb on heading 179° to 520 for RADAR vectors to RENNK, thence . . .

TAKEOFF RUNWAY 32: Climb on heading 318° to 520 for RADAR vectors to RENNK, thence . . .

TAKEOFF RUNWAY 36: Climb on heading 359° to 520 for RADAR vectors to RENNK, thence . . .

. . . on track 016° to COLET, then on track 025° to SUSHI, then on track 026° to WWELL, then on track 026° to INDIE, then on (transition). Maintain ATC assigned altitude. Expect filed altitude 10 minutes after departure.

TPAKK TRANSITION (INDIE8.TPAKK)



NOTE: Chart not to scale.

INDIE EIGHT DEPARTURE (RNAV)
(INDIE8.INDIE) 07OCT21

GALVESTON, TEXAS
SCHOLES INTL AT GALVESTON (GLS)