

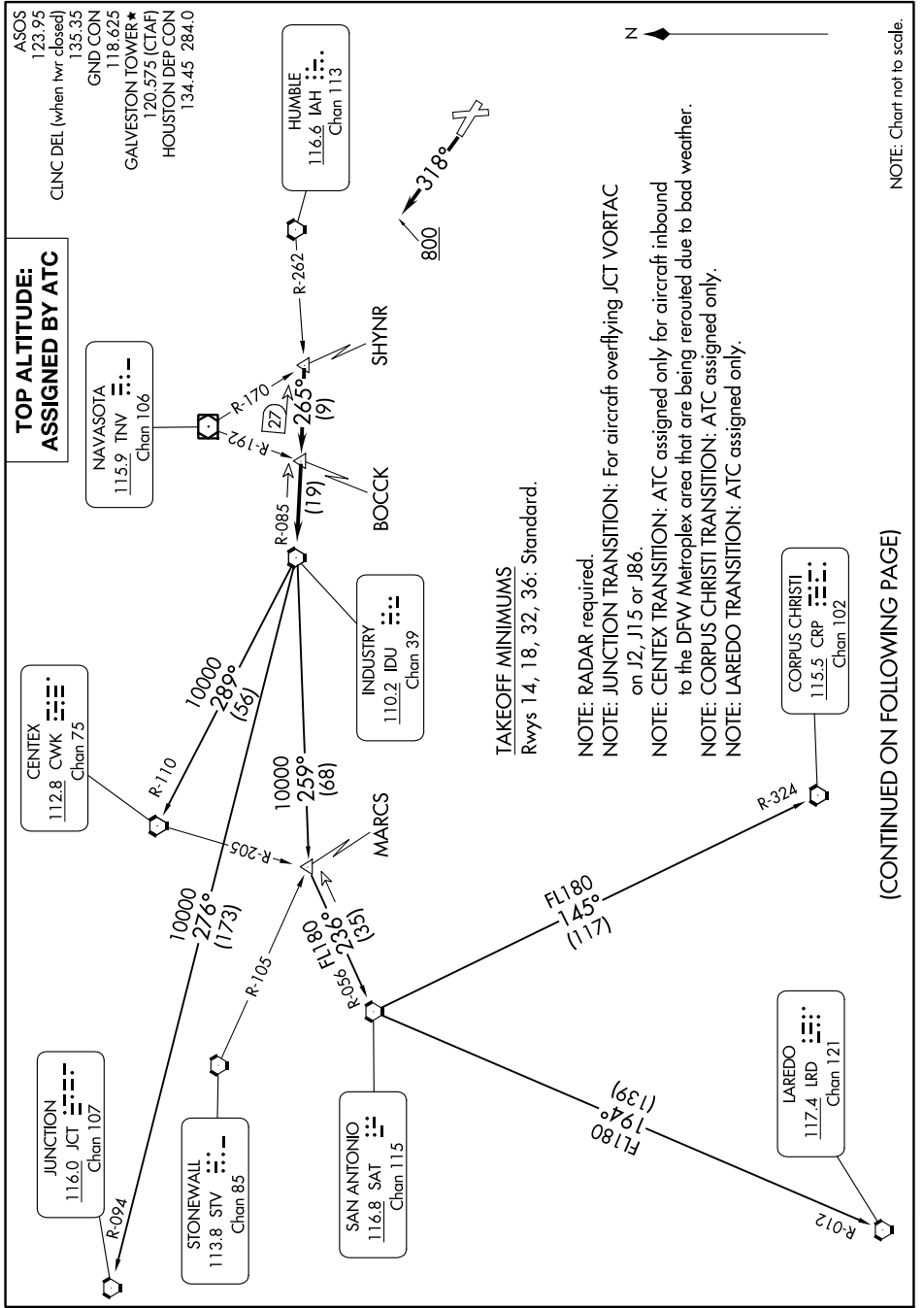
INDUSTRY ONE DEPARTURE

AL-164 (FAA)

SCHOLES INTL AT GALVESTON (GLS)

GALVESTON, TEXAS

SC-5, 28 NOV 2024 to 26 DEC 2024



**TOP ALTITUDE:
ASSIGNED BY ATC**

ASOS
123.95
CLNC DEL (when hwr closed)
135.35
135.35
GND CON
118.625
GALVESTON TOWER*
120.575 (CTAF)
HOUSTON DEP CON
134.45 284.0

CENTEX
112.8 CWK
Chan 75

JUNCTION
116.0 JCT
Chan 107

STONEWALL
113.8 STW
Chan 85

SAN ANTONIO
116.8 SAT
Chan 115

INDUSTRY
110.2 IDU
Chan 39

NAVASOTA
115.9 TNV
Chan 106

HUMBLE
116.6 IAH
Chan 113

LAREDO
117.4 LRD
Chan 121

CORPUS CHRISTI
115.5 CRP
Chan 102

TAKEOFF MINIMUMS
Rwys 14, 18, 32, 36: Standard.

NOTE: RADAR required.
NOTE: JUNCTION TRANSITION: For aircraft overflying JCT VORTAC on J2, J15 or J86.
NOTE: CENTEX TRANSITION: ATC assigned only for aircraft inbound to the DFW Metroplex area that are being rerouted due to bad weather.
NOTE: CORPUS CHRISTI TRANSITION: ATC assigned only.
NOTE: LAREDO TRANSITION: ATC assigned only.

(CONTINUED ON FOLLOWING PAGE)

NOTE: Chart not to scale.

INDUSTRY ONE DEPARTURE

GALVESTON, TEXAS

SCHOLES INTL AT GALVESTON (GLS)

SC-5, 28 NOV 2024 to 26 DEC 2024