

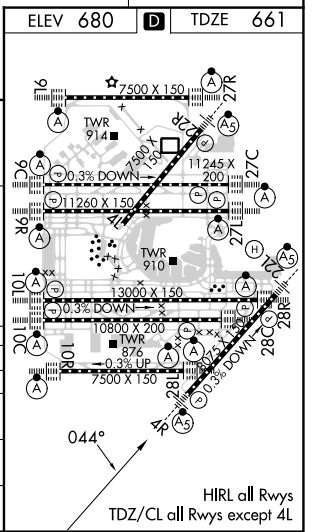
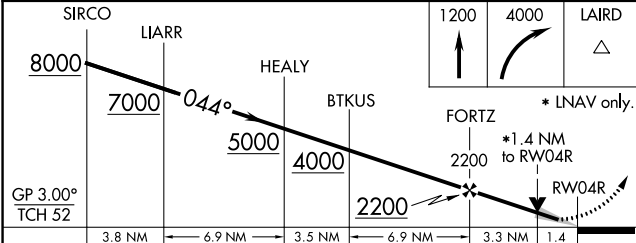
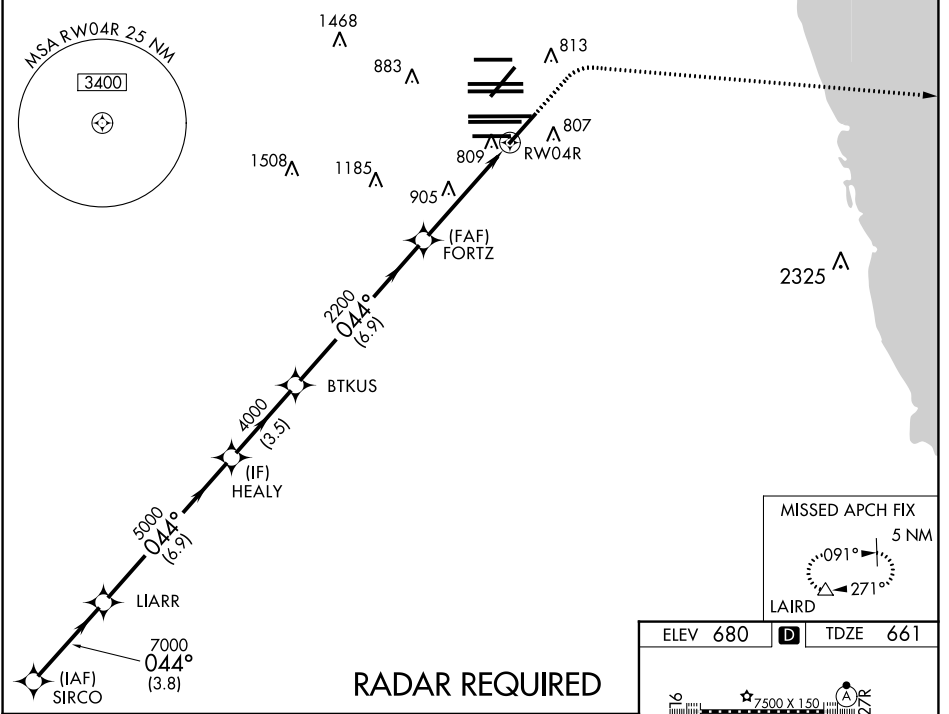
WAAS CH 81929 W04A	APP CRS 044°	Rwy Idg 8075 TDZE 661 Apt Elev 680
--	------------------------	---

RNAV (GPS) RWY 4R

CHICAGO O'HARE INTL (ORD)

RNP APCH - GPS.	MALSR	MISSED APPROACH: Climb to 1200 then climbing right turn to 4000 direct LAIRD and hold, continue climb-in-hold to 4000.
▼ For uncompensated Baro-VNAV systems, LNAV/VNAV NA below -22°C or above 39°C.		

D-ATIS 135.4 282.225	CHICAGO APP CON 119.0 292.125	O'HARE TOWER 120.75 348.0	GND CON 124.125 (TWR NORTH) 118.05 (TWR SOUTH) 226.675 (ALL TWRs)	(TWR CENTER) 121.75 (OBND) 121.9 (IBND)	CLNC DEL 121.6	CPDLC
--	---	-------------------------------------	---	---	--------------------------	-------



ELEV 680	TDZE 661				
RADAR REQUIRED					
SIRCO	LIARR	HEALY	BTJKUS	FORTZ	LAIRD
8000	7000	5000	4000	2200	1200 4000
GP 3.00°	044°	044°	044°	044°	LAIRD
TCH 52					
	3.8 NM	6.9 NM	3.5 NM	6.9 NM	3.3 NM 1.4
CATEGORY	A	B	C	D	
LPV DA		861/18	200 (200-½)		
LNAV/VNAV DA		990/32	329 (400-¾)		
LNAV MDA	1160/24	499 (500-½)	1160/50	499 (500-1)	
CIRCLING	1220-1	540 (600-1)	1220-1½ 540 (600-1½)	1460-2½ 780 (800-2½)	

EC-3, 28 NOV 2024 to 26 DEC 2024

EC-3, 28 NOV 2024 to 26 DEC 2024