

WAAS CH <b>69325</b> <b>W09A</b>	APP CRS <b>093°</b>	Rwy Idg TDZE <b>820</b> Apt Elev <b>827</b>
--	------------------------	---

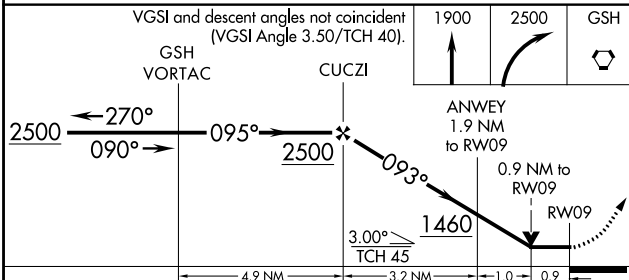
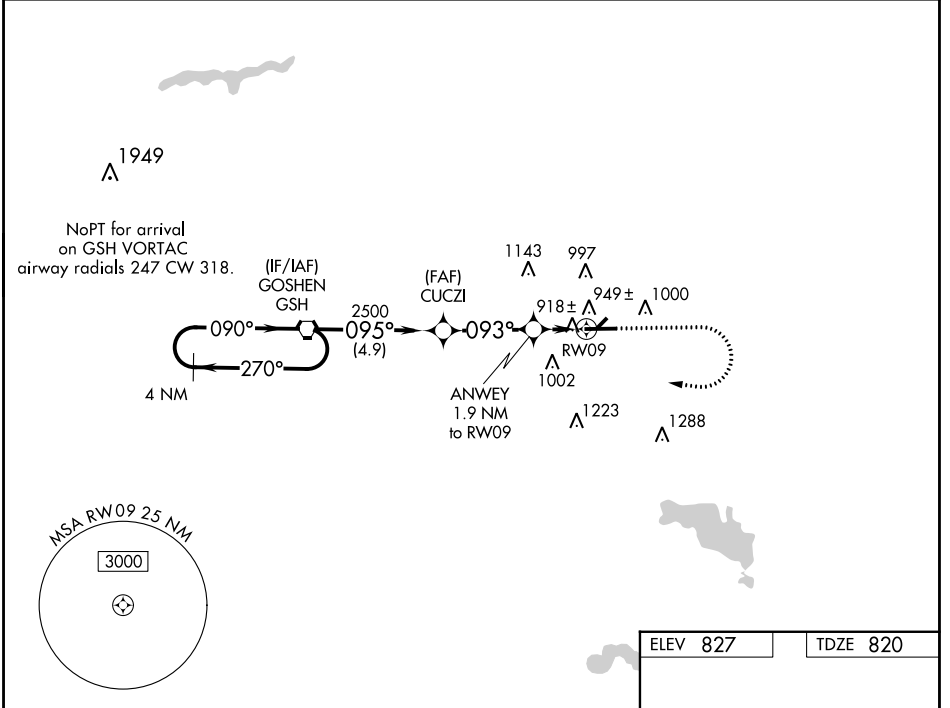
# RNAV (GPS) RWY 9

GOSHEN MUNI (GSH)

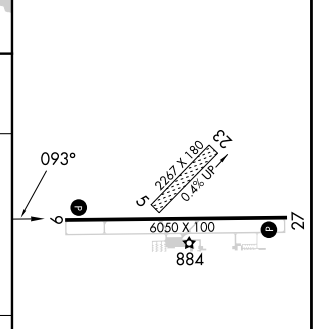
**⚠** DME/DME RNP-0.3 NA. Visibility reduction by helicopters NA. VDP NA with Warsaw altimeter setting. Circling to Rwy 5/23 NA. When local altimeter setting not received, use Warsaw altimeter setting and increase all MDAs 40 feet; increase LP and LNAV Cats C/D visibility 1/8 SM, and Circling Cat D visibility 1/4 SM.

**⚠** MISSED APPROACH: Climb to 1900 then climbing right turn to 2500 direct GSH VORTAC and hold.

ASOS <b>121.45</b>	SOUTH BEND APP CON * <b>132.05 257.8</b>	CLNC DEL <b>125.25</b>	UNICOM <b>123.05 (CTAF)</b> <b>📶</b>
-----------------------	---	---------------------------	---



ELEV 827	TDZE 820
----------	----------



CATEGORY	A	B	C	D
LP MDA		1180-1	360 (400-1)	
LNAV MDA		1200-1	380 (400-1)	
CIRCLING	1300-1 473 (500-1)	1320-1 493 (500-1)	1500-2 673 (700-2)	1540-2 1/4 713 (800-2 1/4)

HIRL Rwy 9-27 **📶**  
REIL Rwy 9 and 27 **📶**

EC-2, 28 NOV 2024 to 26 DEC 2024

EC-2, 28 NOV 2024 to 26 DEC 2024