

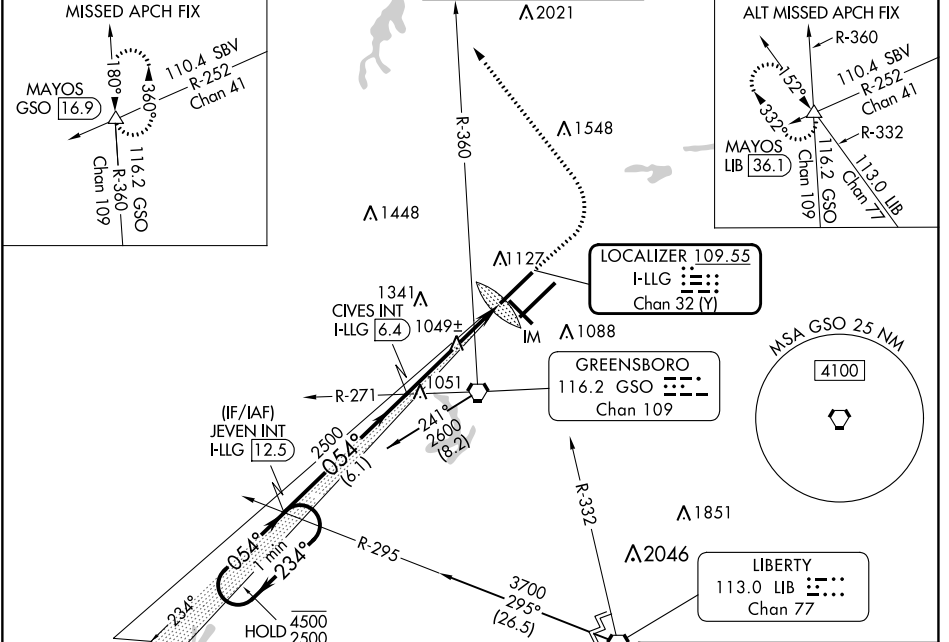
LOC/DME I-LLG	APP CRS	Rwy Idg	9000
109.55	054°	TDZE	916
Chan 32(Y)		Apt Elev	926

# ILS or LOC RWY 5L

PIEDMONT TRIAD INTL (GSO)

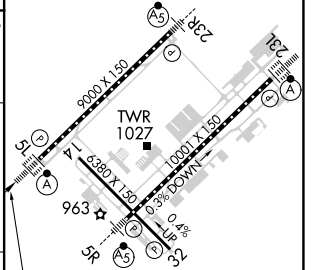
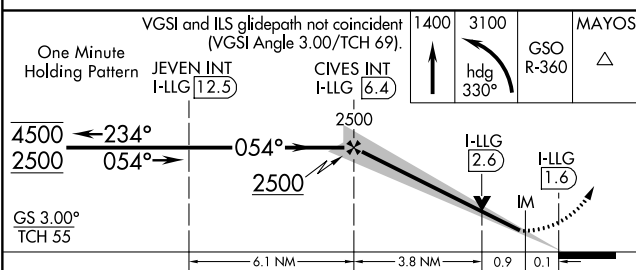
DME or RADAR required for procedure entry at LIB VORTAC.	ALSF-2	MISSED APPROACH: Climb to 1400 then climbing left turn to 3100 on heading 330° and GSO VORTAC R-360 to MAYOS INT/GSO 16.9 DME and hold.
Simultaneous approach authorized. For inop ALS, increase S-LOC 5L Cat C/D visibility to RVR 5500.		

D-ATIS	GREENSBORO APP CON	GREENSBORO TOWER	GND CON	CLNC DEL
128.55	124.35 269.225 126.6 327.075 (250°-049°) (050°-249°)	119.1 290.325	121.9 348.6	121.75



One Minute Holding Pattern	VEVINT I-LLG (12.5)	CIVES INT I-LLG (6.4)	1400	3100	GSO R-360	MAYOS
4500 ← 234°	2500 → 054°	2500	hdg 330°			
GS 3.00° TCH 55						

ELEV 926	TDZE 916
TDZ/CL Rwy 5L, 23R and 23L	
REIL Rwy 32	
HIRL Rwy 14-32, 5R-23L and 5L-23R	



CATEGORY	A	B	C	D
S-ILS 5L	1116/18		200 (200-½)	
S-LOC 5L	1300/24	384 (400-½)	1300/35	384 (400-¾)
CIRCLING	1440-1	514 (600-1)	1700-2¼ 774 (800-2¼)	1700-2½ 774 (800-2½)

FAF to MAP 4.7 NM					
Knots	60	90	120	150	180
Min:Sec	4:42	3:08	2:21	1:53	1:34

SE-2, 28 NOV 2024 to 26 DEC 2024

SE-2, 28 NOV 2024 to 26 DEC 2024