

LOC/DME I-GFN <b>111.15</b> Chan 48 (Y)	APP CRS <b>325°</b>	Rwy Idg TDZE Apt Elev <b>6380</b> <b>902</b> <b>926</b>
---	------------------------	--

# ILS Y or LOC Y RWY 32

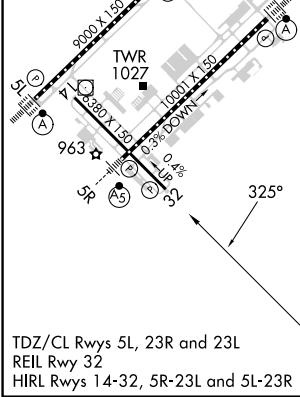
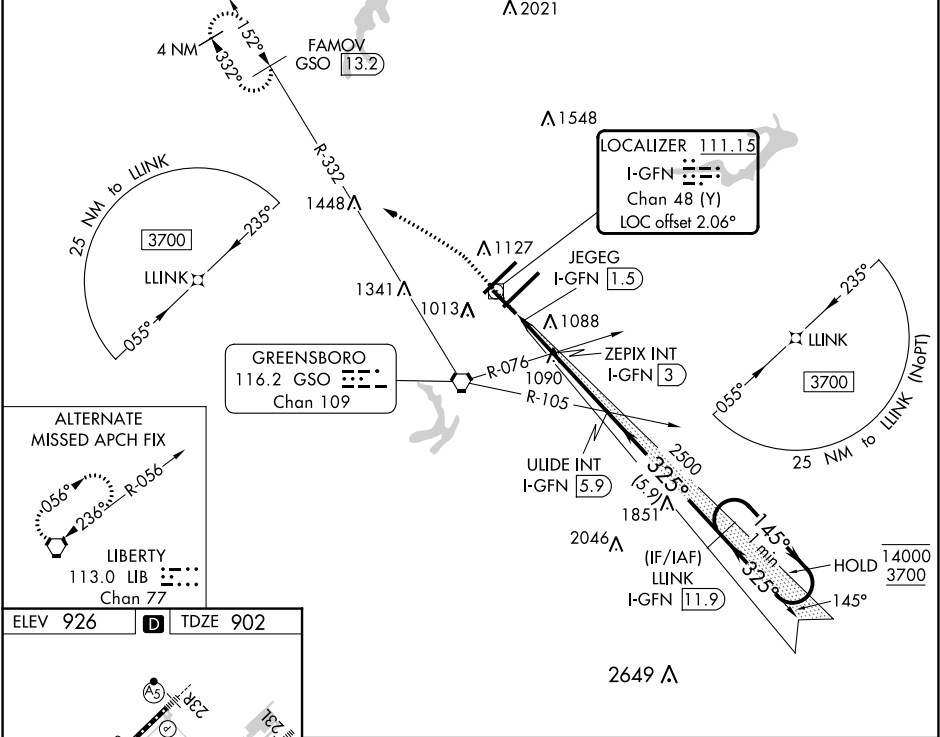
PIEDMONT TRIAD INTL (GSO)

RNAV 1-GPS or RADAR required for procedure entry.  
DME required.

**▼**  
**▲** Rwy 32 helicopter visibility reduction below  $\frac{3}{4}$  SM NA.

MISSED APPROACH: Climb to 1400 then climbing left turn to 3700 on heading 307° and GSO VORTAC R-332 to FAMOV/GSO 13.2 DME and hold.

D-ATIS <b>128.55</b>	GREENSBORO APP CON <b>124.35 269.225</b> <b>126.6 327.075</b> (050°-249°)	GREENSBORO TOWER <b>119.1 290.325</b>	GND CON <b>121.9 348.6</b>	CLNC DEL <b>121.75</b>
-------------------------	---	--	-------------------------------	---------------------------



ELEV 926	<b>D</b>	TDZE 902				
1400	3700	GSO R-332	FAMOV GSO 13.2	ULIDE INT I-GFN 5.9	LLINK I-GFN 11.9	One Minute Holding Pattern
	hdg 307°		JEGEG I-GFN 1.5	ZEPIX INT I-GFN 3	2500	145° → 4000
					1600	← 325° 3700
					2500	GS 3.00° TCH 53
CATEGORY	A	B	C	D		
S-ILS 32		1152- $\frac{3}{4}$	250 (300- $\frac{3}{4}$ )			
S-LOC 32	1400-1	498 (500-1)	1400- $\frac{1}{8}$	498 (500- $\frac{1}{8}$ )		
<b>C</b> CIRCLING	1440-1	514 (600-1)	1700- $\frac{2}{4}$	774 (800- $\frac{2}{4}$ )	1700- $\frac{2}{2}$	774 (800- $\frac{2}{2}$ )

SE-2, 28 NOV 2024 to 26 DEC 2024

SE-2, 28 NOV 2024 to 26 DEC 2024