

(BIMMR3.BIMMR) 22139

AL-179 (FAA)

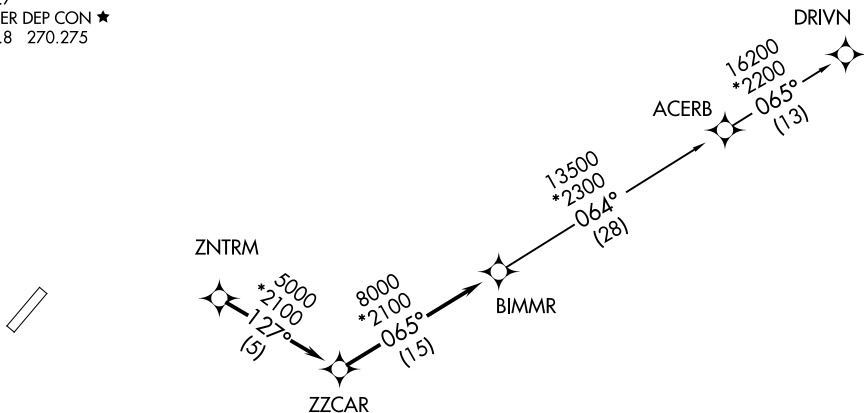
# BIMMR THREE DEPARTURE (RNAV)

DONALDSON FLD (GYH)  
GREENVILLE, SOUTH CAROLINA

AWOS-3  
127.325  
CLNC DEL  
121.4  
GND CON  
121.4  
DONALDSON TOWER ★  
133.325 269.25  
UNICOM  
122.7  
GREER DEP CON ★  
118.8 270.275

RNAV 1 - DME/DME/IRU or GPS.  
RADAR required.

**TOP ALTITUDE:**  
**3000**



### TAKEOFF MINIMUMS

Rwy 23: Standard.

Rwy 5: 300-1¾ or standard with minimum climb of 223' per NM to 1300, or alternatively, with standard takeoff minimums and a normal 200' per NM climb gradient, takeoff must occur no later than 1900' prior to DER.

NOTE: Do not exceed 250K until advised by ATC.

NOTE: For turbojets only.

NOTE: Chart not to scale.



### DEPARTURE ROUTE DESCRIPTION

TAKEOFF RUNWAYS 5, 23: Climb on assigned heading for RADAR vectors to ZNTRM, thence. . . .

. . . .on depicted route to BIMMR. Then on assigned transition. Maintain 3000. Expect clearance to filed altitude within 10 minutes after departure.

ACERB TRANSITION (BIMMR3.ACERB)

DRIVN TRANSITION (BIMMR3.DRIVN)

# BIMMR THREE DEPARTURE (RNAV)

(BIMMR3.BIMMR) 19MAY22

GREENVILLE, SOUTH CAROLINA  
DONALDSON FLD (GYH)

SE-2, 28 NOV 2024 to 26 DEC 2024

SE-2, 28 NOV 2024 to 26 DEC 2024