

HI-ILS or LOC Z RWY 26

LOC I-ABM 109.9	APCH CRS 258°	Rwy Idg 10,002	TDZE 8	Arprt Elev 8
---------------------------	-------------------------	-------------------	-----------	-----------------

[USAF]

LANGLEY AFB (KLFJ)

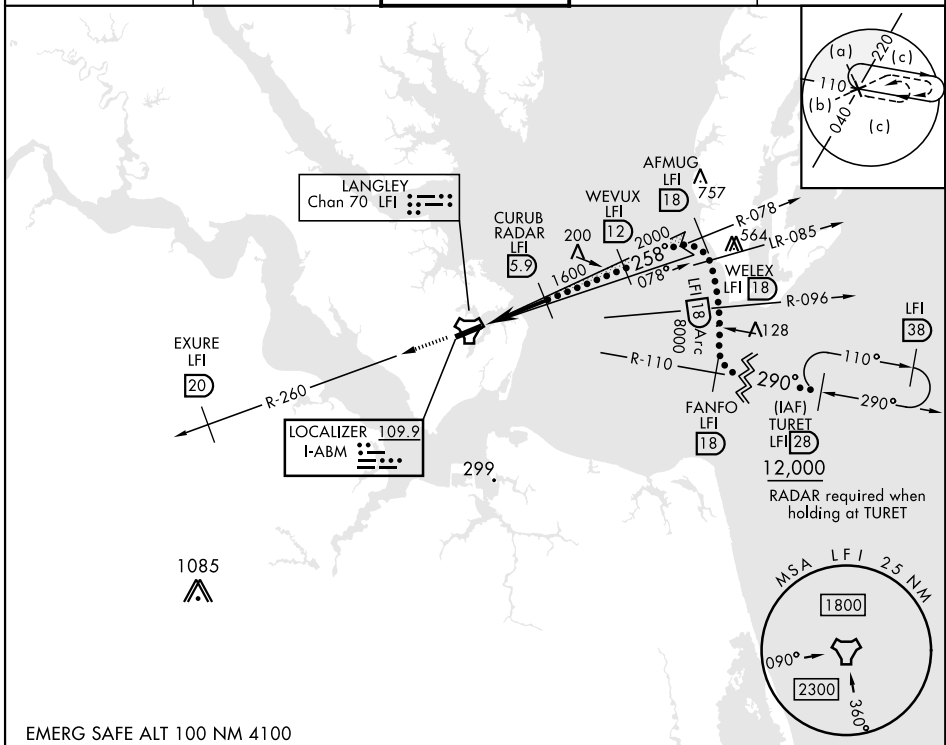
RADAR or DME required.



MISSED APPROACH: Climb to 3000 via LFI R-260 to 20 DME (EXJURE), then as instructed by ATC.

- *When ALS inop, increase RVR to 40, vis to 3/4 mile.
- **When ALS inop, increase RVR to 55, vis to 1 miles.
- ***Circling S of Rwy 8-26 not authorized.

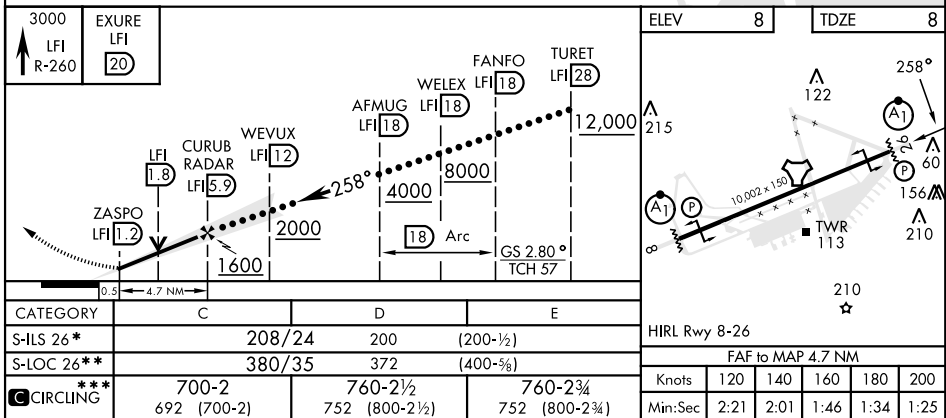
ATIS ★ 270.1	NORFOLK APP CON 125.7 335.625	TOWER ★ 125.0 253.5	GND CON 121.7 275.8	CLNC DEL 118.85 257.625
------------------------	---	-------------------------------	-------------------------------	-----------------------------------



NE-3, 28 NOV 2024 to 26 DEC 2024

NE-3, 28 NOV 2024 to 26 DEC 2024

EMERG SAFE ALT 100 NM 4100



HI-ILS or LOC Z RWY 26