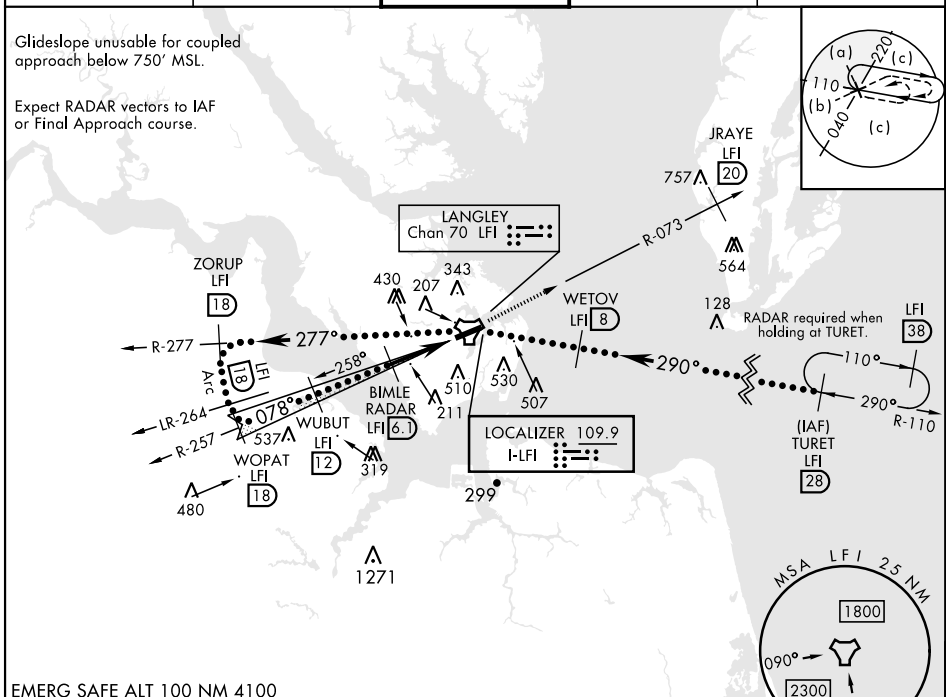


# HI-ILS or LOC Z RWY 8

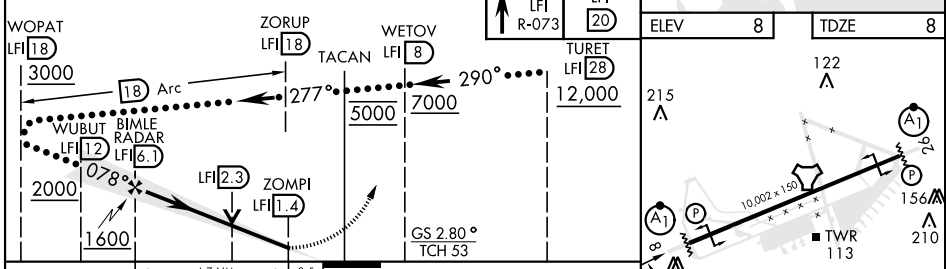
LOC I-LFI <b>109.9</b>	APCH CRS <b>078°</b>	Rwy Ildg 10,002 TDZE 8 Arprt Elev 8	[USAF]	LANGLEY AFB (KLFJ)
---------------------------	-------------------------	--	--------	--------------------

RADAR or DME required.	ALSF-1 	MISSED APPROACH: Climb to 3000 via LFI R-073 to 20 DME (JRAYE), then as instructed by ATC.
<p>▼ * When ALS inop, increase RVR to 40 and vis to 3/8 mile.</p> <p>** When ALS inop, increase vis to 1 3/8 miles.</p> <p>*** Circling S of Rwy 8-26 not authorized.</p>		

ATIS ★ <b>270.1</b>	NORFOLK APP CON <b>125.7 335.625</b>	TOWER ★ <b>125.0 253.5</b>	GND CON <b>121.7 275.8</b>	CLNC DEL <b>118.85 257.625</b>
------------------------	---	-------------------------------	-------------------------------	-----------------------------------



EMERG SAFE ALT 100 NM 4100



CATEGORY	C	D	E	FAF to MAP 4.7 NM					
S-ILS 8*	208/24	200	(200-1/2)	Knots	120	140	160	180	200
S-LOC 8**	480/50	472	(500-1)	Min:Sec	2:21	2:01	1:46	1:34	1:25
CIRCLING ***	700-2 692 (700-2)	760-2 1/2 752 (800-2 1/2)	760-2 3/4 752 (800-2 3/4)						

# HI-ILS or LOC Z RWY 8

NE-3, 28 NOV 2024 to 26 DEC 2024

NE-3, 28 NOV 2024 to 26 DEC 2024