

HI-TACAN Z RWY 26

TACAN LFI Chan 70	APCH CRS 263°	Rwy ldg 10,002 TDZE 8 Arprt Elev 8
--------------------------	----------------------	---

[USAF]

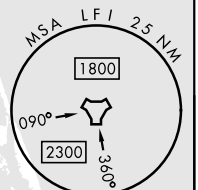
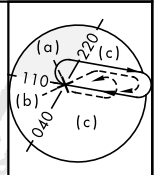
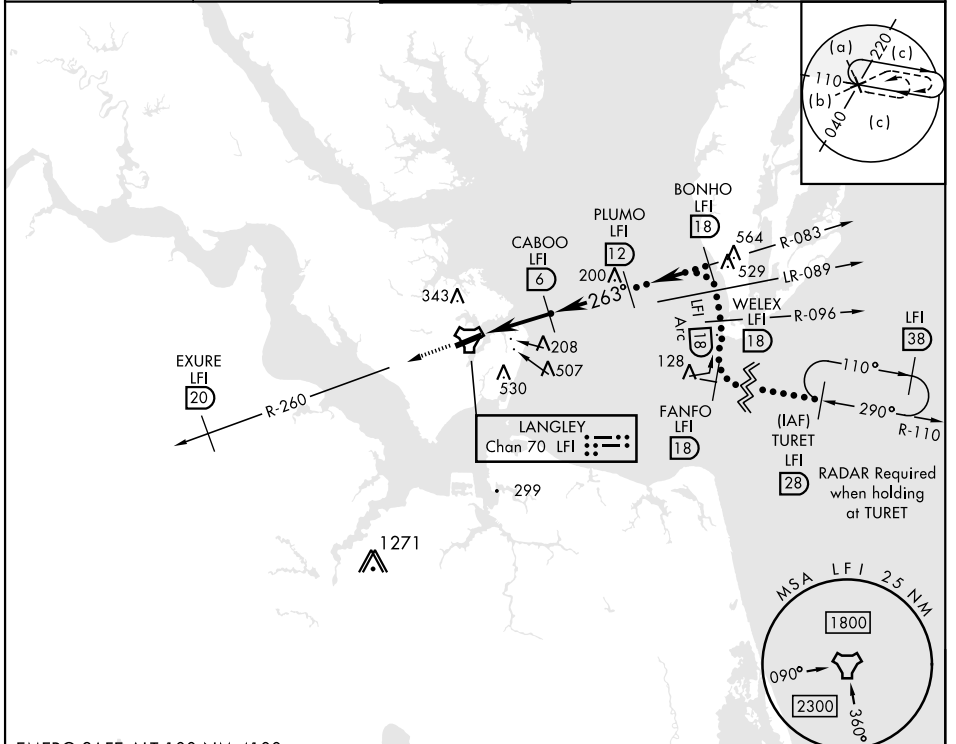
LANGLEY AFB (KLFJ)

▼ * When ALS inop, increase CAT CDE vis to 1½ miles.
 ** Circling S of Rwy 8-26 not authorized.



MISSSED APPROACH: Climb to 3000 via LFI R-260 to 20 DME (EXURE), then as instructed by ATC.

ATIS * 270.1	NORFOLK APP CON 125.7 335.625	TOWER * 125.0 253.5	GND CON 121.7 275.8	CLNC DEL 118.85 257.625
---------------------	--------------------------------------	----------------------------	----------------------------	--------------------------------

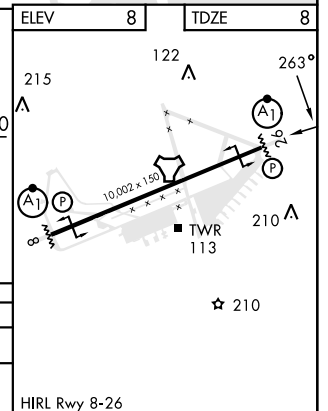


NE-3, 28 NOV 2024 to 26 DEC 2024

NE-3, 28 NOV 2024 to 26 DEC 2024

EMERG SAFE ALT 100 NM 4100

3000 LFI R-260	EXURE LFI 20			
CATEGORY	C	D	E	
S-26 *	480/50	472	(500-1)	
CIRCLING **	700-2 692 (700-2)	760-2½ 752 (800-2½)	760-2¾ 752 (800-2¾)	



HI-TACAN Z RWY 26