

HAMPTON, VIRGINIA

RNAV (GPS) RWY 8

WAAS CH 41170 W08A	APCH CRS 078°	Rwy ldg TDZE Arprt Elev	10,002 8 8
--------------------------	------------------	-------------------------------	------------------

-(USAF)

LANGLEY AFB (KLFJ)

RNP APCH

▼ * When ALS inop, increase RVR to 40, vis to 3/4 mile.
** When ALS inop, increase vis to 1 3/8 miles.

ALS-1



MISSED APPROACH: Climb to 3000 on course 073° to JRAYE, then as instructed by ATC.

ATIS★ 270.1	NORFOLK APP CON/DEP CON 125.7 335.625	TOWER★ 125.0 253.5	GND CON 121.7 275.8	CLNC DEL 118.85 257.625
----------------	--	-----------------------	------------------------	----------------------------

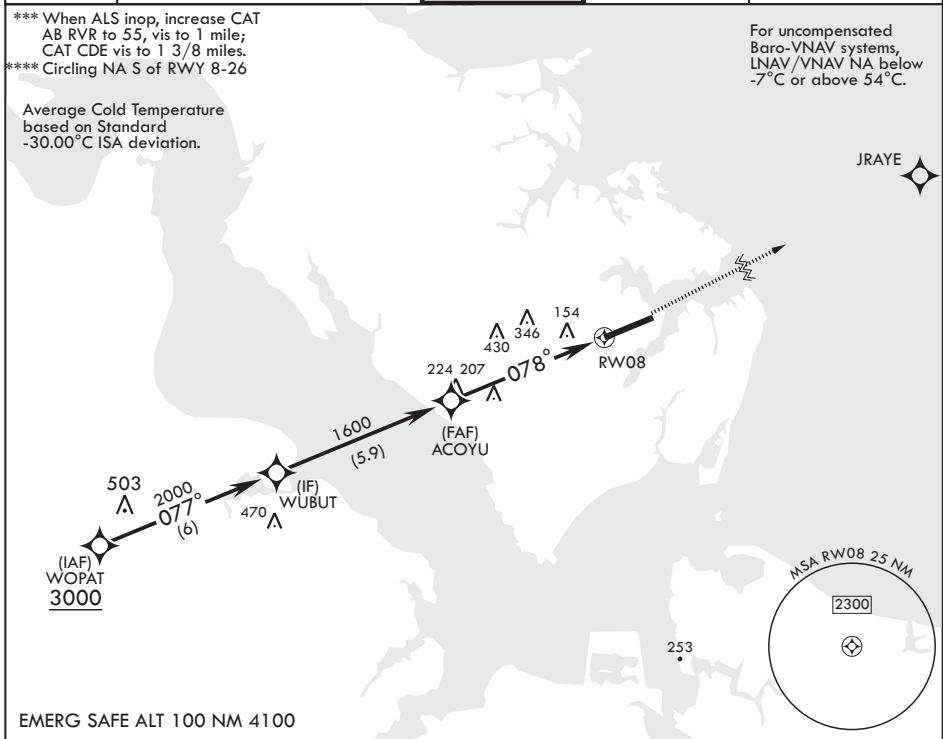
*** When ALS inop, increase CAT
AB RVR to 55, vis to 1 mile;
CAT CDE vis to 1 3/8 miles.
**** Circling NA S of RWY 8-26

For uncompensated
Baro-VNAV systems,
LNAV/VNAV NA below
-7°C or above 54°C.

Average Cold Temperature
based on Standard
-30.00°C ISA deviation.

NE-3, 28 NOV 2024 to 26 DEC 2024

NE-3, 28 NOV 2024 to 26 DEC 2024



EMERG SAFE ALT 100 NM 4100

WUBUT	3000	JRAYE	ELEV 8	TDZE 8	
2000	ACOYU	1.4 NM to RWY 8	260	207	
077°	1600	078°	1002 x 150	113	
GP 2.80° TCH 53	5.2 NM		210		
CATEGORY	A	B	C	D	E
LPV DA*	208/24		200	(200-½)	
LNAV/VNAV DA**	472/50		464	(500-1)	
LNAV MDA***	480/24	472 (500-½)	480/50	472	(500-1)
◻ CIRCLING****	540-1 532 (600-1)	580-1 572 (600-1)	700-2 692 (700-2)	760-2½ 752 (800-2½)	760-2¾ 752 (800-2¾)
HIRL all Rwys					

HAMPTON, VIRGINIA

37°05'N - 76°22'W

LANGLEY AFB (KLFJ)

Amdt 1 11AUG22

RNAV (GPS) RWY 8