

WAAS CH 62830 W14A	APP CRS 137°	Rwy Idg TDZE Apt Elev	6236 2608 2613
--	------------------------	-----------------------------	---

RNAV (GPS) RWY 14

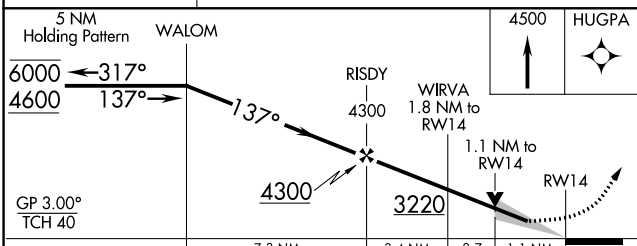
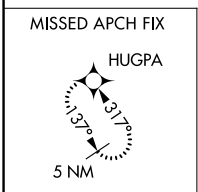
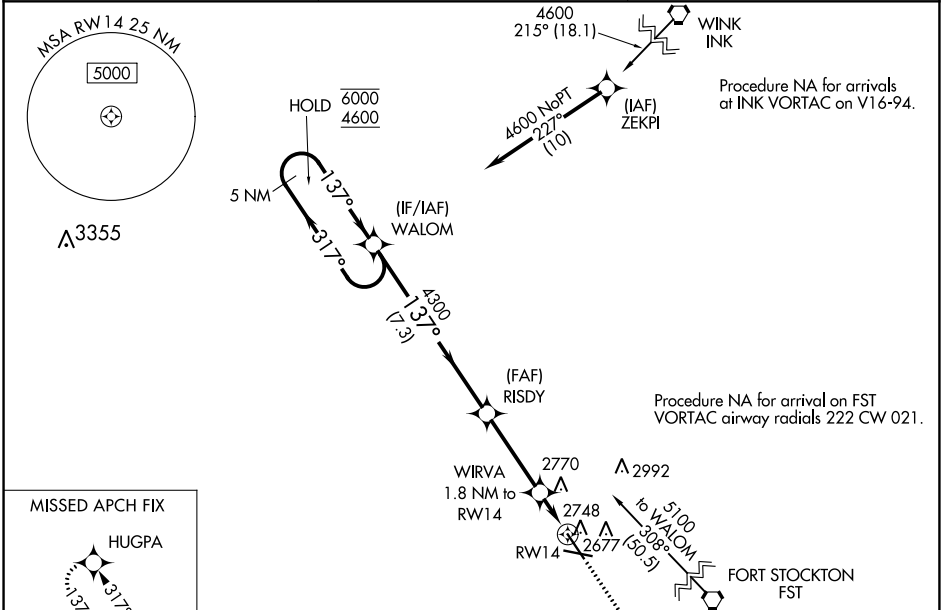
PECOS MUNI (PEQ)

RNP APCH - GPS.

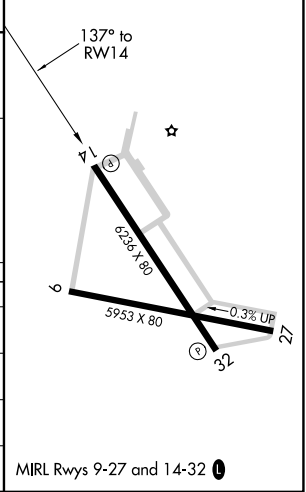
▼ Circling Rwy 9, 27 NA at night. Baro-VNAV and VDP NA when using Wink altimeter setting.
▲ For uncompensated Baro-VNAV systems, LNAV/VNAV NA below -20°C or above 54°C. When local altimeter setting not received, use Wink altimeter setting and increase LPV DA to 2903 feet and all visibilities ¼ SM. Increase LNAV/VNAV DA to 3004 feet and all visibilities ¼ SM. Increase all MDAs 100 feet and LNAV visibility Cat C/D ¼ SM, and Circling visibility Cat C/D ¼ SM.

MISSED APPROACH:
Climb to 4500 direct HUGPA and hold.

AWOS-3 118.175	ALBUQUERQUE CENTER 135.875 292.15	UNICOM 122.8 (CTAF) 0
--------------------------	---	---------------------------------



ELEV 2613	TDZE 2608
-----------	-----------



CATEGORY	A	B	C	D
LPV DA		2808-¾	200 (200-¾)	
LNAV/VNAV DA		2909-7/8	301 (300-7/8)	
LNAV MDA	3000-1	392 (400-1)	3000-1½	392 (400-1½)
CIRCLING	3060-1 447 (500-1)	3140-1 527 (600-1)	3360-2¼ 747 (800-2¼)	3360-2½ 747 (800-2½)

MIRL Rwy 9-27 and 14-32 0

SC-3, 28 NOV 2024 to 26 DEC 2024

SC-3, 28 NOV 2024 to 26 DEC 2024