

| | | | |
|---------------------------|------------------------|-----------------------------|---|
| LOC I-MDT 110.9 | APP CRS 128° | Rwy Idg TDZE Apt Elev | 8070 308 310 |
|---------------------------|------------------------|-----------------------------|---|

ILS RWY 13 (CAT II & III)

HARRISBURG INTL (MDT)

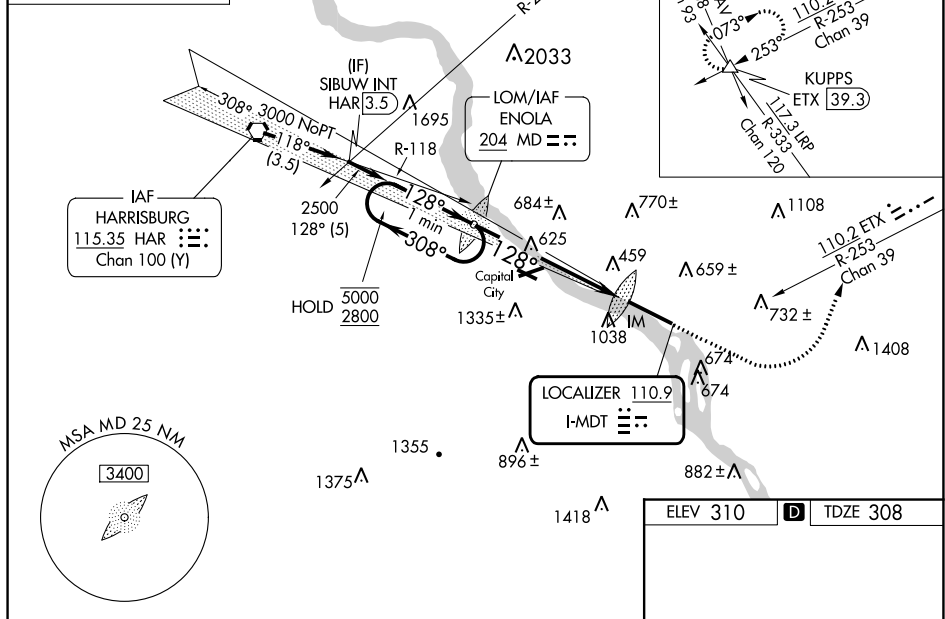
CAT II: RVR 1000 authorized with specific OPSPEC, MSPEC, or LOA approval and use of autoland or HUD to touchdown.

MISSED APPROACH: Climb to 900 then climbing left turn to 3000 on heading 070° and on ETX VOR/DME R-253 to KUPPS INT/ETX 39.3 DME and hold.

| | | | |
|-----------------------------|--|---|--------------------------------------|
| ATIS 118.8 | HARRISBURG APP CON (080°-179°) 126.45 281.525 (180°-329°) 124.1 273.525 (330°-079°) 118.25 269.45 | HARRISBURG INTL TOWER 124.8 269.35 | GND CON 121.7 348.6 |
|-----------------------------|--|---|--------------------------------------|

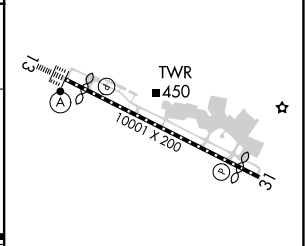
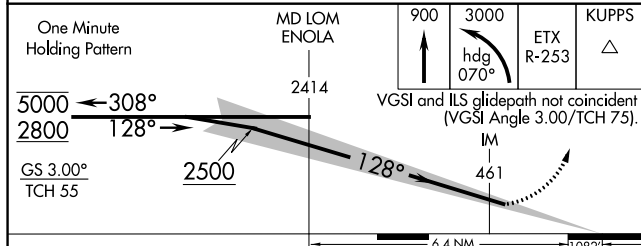
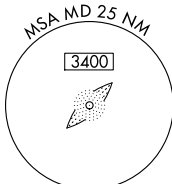
ALTERNATE MISSED APCH FIX
HARRISBURG HAR
115.35
Chan 100 (Y)

Procedure NA for arrival on HAR VORTAC airway radials 102 CW 157 and at HAR VORTAC on V12 eastbound.



NE-4, 28 NOV 2024 to 26 DEC 2024

NE-4, 28 NOV 2024 to 26 DEC 2024



| | | | | |
|----------|------------------|---|------------|---|
| CATEGORY | A | B | C | D |
| S-ILS 13 | CAT II RA 100/12 | | 100 DA 408 | |
| S-ILS 13 | CAT III | | RVR 06 | |

CATEGORY II & III ILS - SPECIAL AIRCREW & AIRCRAFT CERTIFICATION REQUIRED

TDZ/CL Rwy 13
REIL Rwy 31
HIRL Rwy 13-31