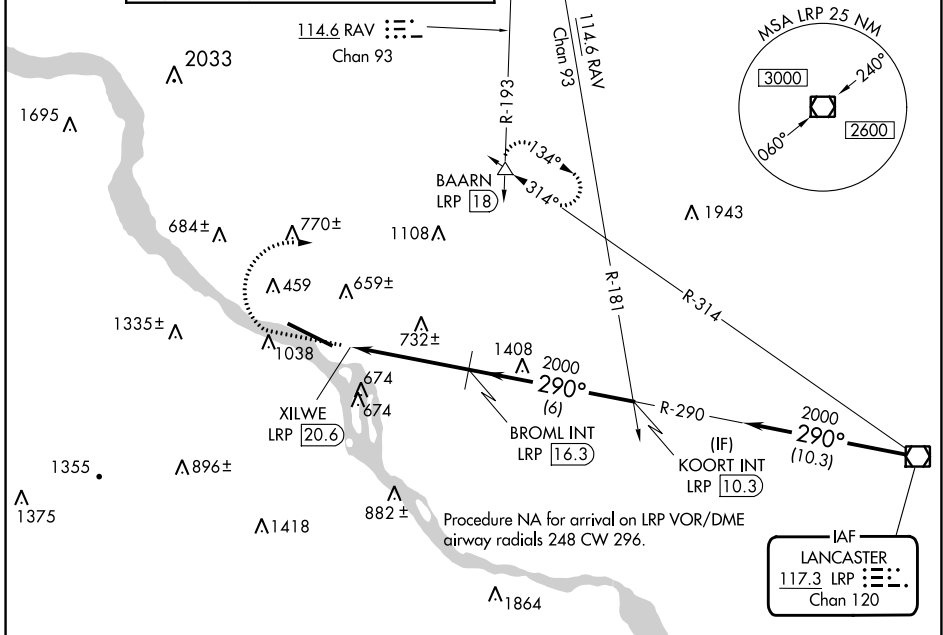


VOR/DME LRP 117.3 Chan 120	APP CRS 290°	Rwy Idg TDZE 308 Apt Elev 310
--	------------------------	---

VOR RWY 31

HARRISBURG INTL (MDT)

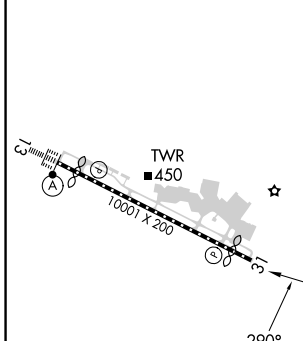
<p>Circling NA south of Rwy 13-31. Rwy 31 helicopter visibility reduction below $\frac{3}{4}$ SM NA. -17°C</p>	<p>MISSED APPROACH: Climb to 1500 then climbing right turn to 3000 on heading 090° and RAV VORTAC R-193 to BAARN INT/LRP 18 DME and hold.</p>											
<p>ATIS 118.8</p>	<p>HARRISBURG APP CON</p> <table border="1"> <tr> <td>(080°-179°)</td> <td>126.45</td> <td>281.525</td> </tr> <tr> <td>(180°-329°)</td> <td>124.1</td> <td>273.525</td> </tr> <tr> <td>(330°-079°)</td> <td>118.25</td> <td>269.45</td> </tr> </table>	(080°-179°)	126.45	281.525	(180°-329°)	124.1	273.525	(330°-079°)	118.25	269.45	<p>HARRISBURG INTL TOWER 124.8 269.35</p>	<p>GND CON 121.7 348.6</p>
(080°-179°)	126.45	281.525										
(180°-329°)	124.1	273.525										
(330°-079°)	118.25	269.45										



NE-4, 28 NOV 2024 to 26 DEC 2024

NE-4, 28 NOV 2024 to 26 DEC 2024

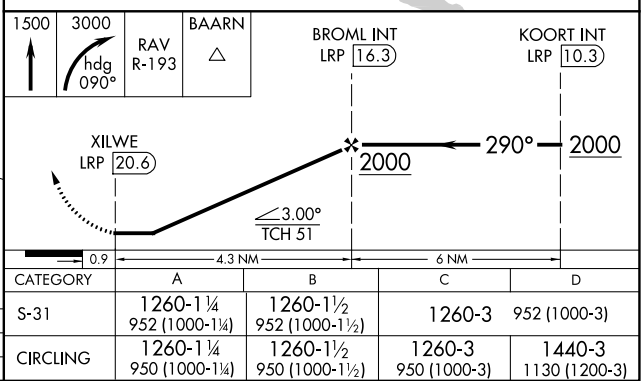
ELEV 310	D	TDZE 308
----------	----------	----------



TDZ/CL Rwy 13
REL Rwy 31
HIRL Rwy 13-31

FAF to MAP 4.3 NM

Knots	60	90	120	150	180
Min:Sec	4:18	2:52	2:09	1:43	1:26



VOR RWY 31