

LOC I-HLN	APP CRS	Rwy Idg	<b>9000</b>
<b>110.1</b>	<b>271°</b>	TDZE	<b>3852</b>
		Apt Elev	<b>3877</b>


# ILS Y or LOC Y RWY 27

HELENA RGNL (HLN)

ADF or RADAR required for procedure entry. ADF or DME required.

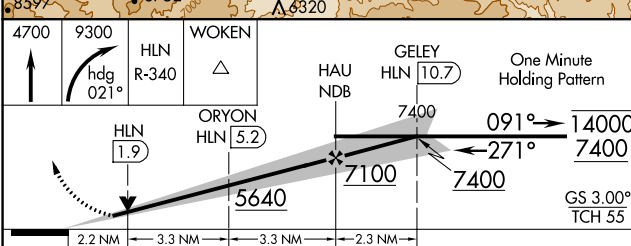
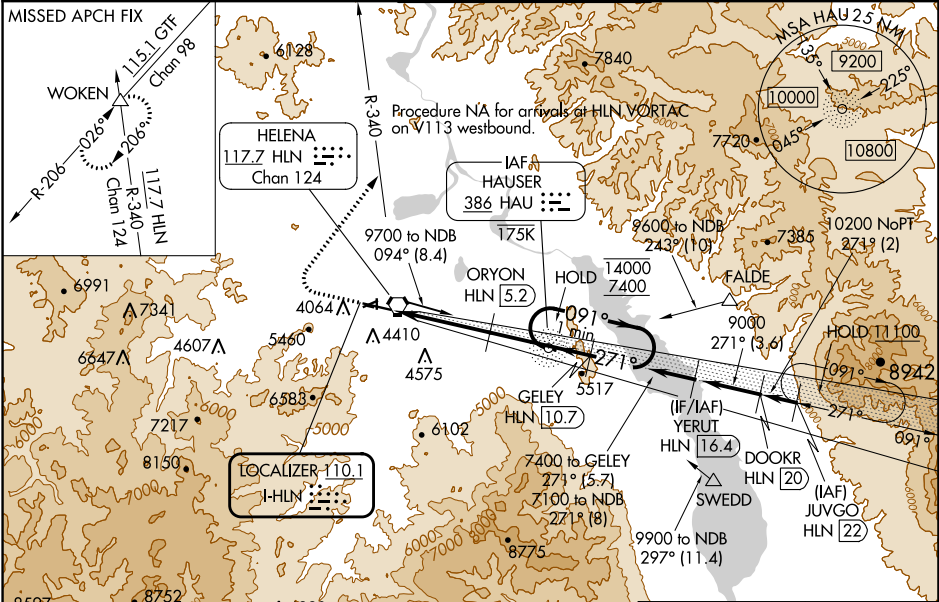
**⚠** Circling NA to Rwy 5, 23, 35 NA at night. Inop table does not apply to S-LOC 27 all Cats. For inop ALS, increase S-ILS 27 all Cats visibility to 1½ SM, ORYON fix minimums: S-LOC 27 Cat C/D/E visibility to 2 SM. Holding at HAU NDB authorized for Cat A and B aircraft only. Circling NA for Cats D and E south of Rwy 9-27.  
 \*DME from HLN VORTAC. DME use requires simultaneous reception of I-HLN and HLN DME.

**MALSRL**



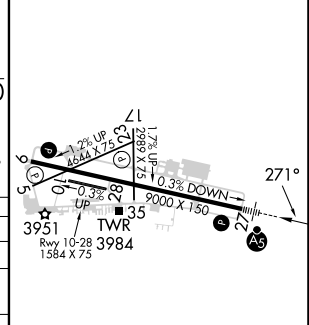
MISSED APPROACH: Climb to 4700 then climbing right turn to 9300 on heading 021° and on HLN VORTAC R-340 to WOKEN INT and hold, continue climb-in-hold to 9300.

ATIS <b>120.4</b>	HELENA APP CON * <b>119.5 229.4</b>	HELENA TOWER * <b>118.3 (CTAF) 0 257.8</b>	GND CON <b>121.9</b>	UNICOM <b>122.95</b>
----------------------	--	---	-------------------------	-------------------------



ELEV	<b>3877</b>	TDZE	<b>3852</b>
------	-------------	------	-------------

CATEGORY	A	B	C	D	E
S-ILS 27	4496-1½ 644 (700-1½)				
S-LOC 27	5640-1¼ 1788 (1800-1¼)	5640-1½ 1788 (1800-1½)	5640-3	1788	(1800-3)
<b>C</b> CIRCLING	5640-1¼ 1763 (1800-1¼)	5640-1½ 1763 (1800-1½)	6000-3	2123	(2200-3)
ORYON FIX MINIMUMS*					
S-LOC 27	4600-½ 748 (800-½)	4600-¾ 748 (800-¾)	4600-1¾	748	(800-1¾)
<b>C</b> CIRCLING	4640-1 763 (800-1)	4800-1¼ 923 (1000-1¼)	6000-3	2123	(2200-3)



REIL Rwys 9, 17 and 35  
 MIRL Rwys 5-23 and 17-35  
 HIRL Rwy 9-27

FAF to MAP 8.7 NM

Knots	60	90	120	150	180
Min:Sec	8:42	5:48	4:21	3:29	2:54

NW-1, 28 NOV 2024 to 26 DEC 2024

NW-1, 28 NOV 2024 to 26 DEC 2024