


LOC/DME I-HON 110.3 Chan 40	APP CRS 121°	Rwy Idg 7201 TDZE 1289 Apt Elev 1289
---	------------------------	---

ILS or LOC RWY 12

HURON RGNL (HON)

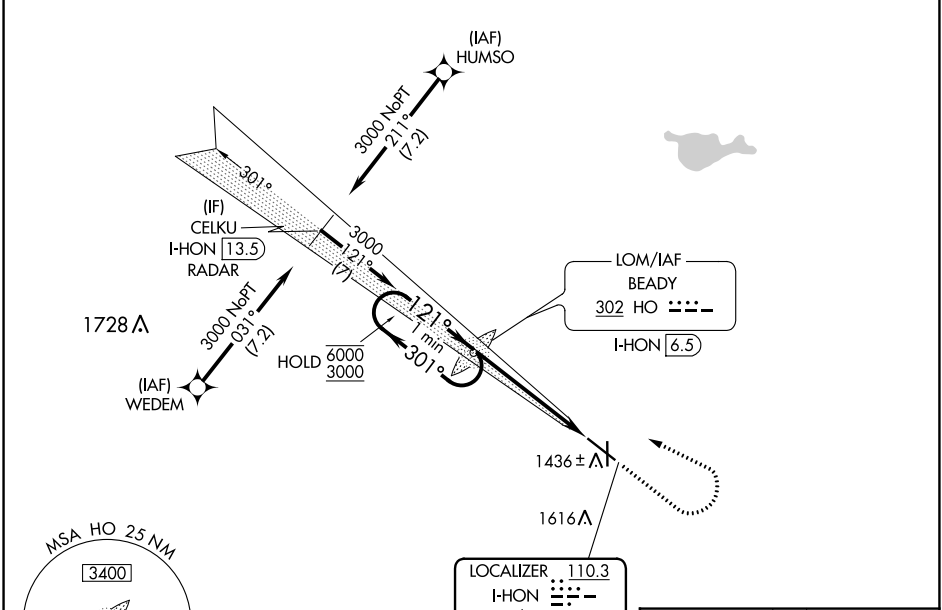
RNAV 1-GPS or RADAR required for procedure entry. ADF required.
From HUMSO and WEDEM: RNAV-1 GPS required.

⚠ Circling Rwy 18, 36 NA at night. For inop ALS, increase S-LOC 12
Cat C/D to 1 3/8 SM.

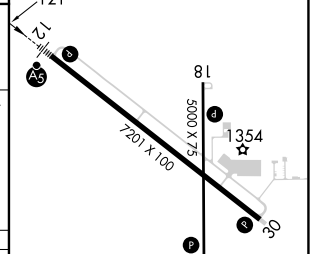
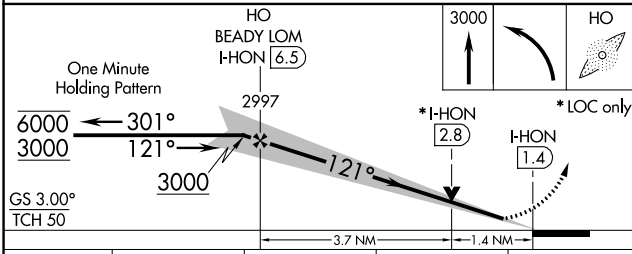
MALSR 

MISSED APPROACH: Climb to 3000 then left turn direct BEADY LOM and hold.

ASOS 118.125	MINNEAPOLIS CENTER 126.25 339.8	UNICOM 123.0 (CTAF) Ⓛ
------------------------	---	---------------------------------



ELEV 1289	D TDZE 1289
HIRL Rwy 12-30 Ⓛ	
MIRL Rwy 18-36 Ⓛ	
REIL Rws 18, 30 and 36 Ⓛ	



CATEGORY	A	B	C	D
S-ILS 12	1489-1/2 200 (200-1/2)			
S-LOC 12	1780-1/2	491 (500-1/2)	1780-1	491 (500-1)
C CIRCLING	1820-1	531 (600-1)	1920-1 3/4 631 (700-1 3/4)	1980-2 1/4 691 (700-2 1/4)

FAF to MAP 5.1 NM					
Knots	60	90	120	150	180
Min:Sec	5:06	3:24	2:33	2:02	1:42

NC-1, 28 NOV 2024 to 26 DEC 2024

NC-1, 28 NOV 2024 to 26 DEC 2024