

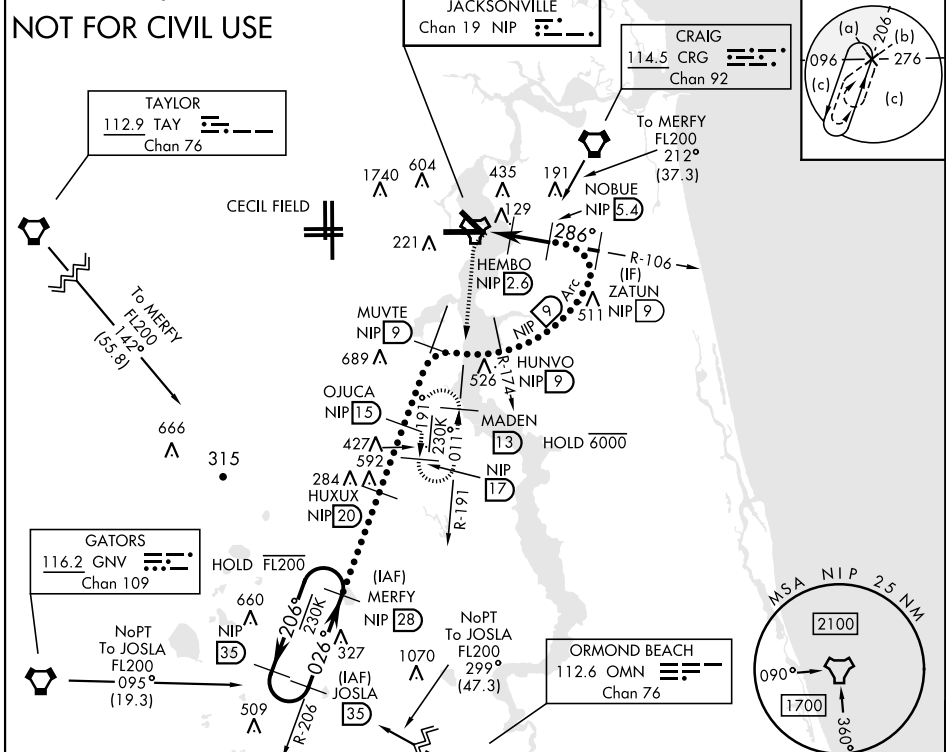
# HI-TACAN Z RWY 28

TACAN Chan <b>19</b>	NIP	APCH CRS <b>286°</b>	Rwy ldg TDZE Arpt Elev <b>9003</b> <b>13</b> <b>23</b>	[USN]	JACKSONVILLE NAS (TOWERS FLD)	(KNIP)
-------------------------	-----	-------------------------	---	-------	-------------------------------	--------

SALSF  
 \* When ALS inop, increase CAT CDE vis to 1½ miles.  
 MISSED APPROACH: Climb to 2000 direct NIP TACAN and turn left outbound R-191 to MADEN and hold.

ATIS <b>124.35 290.425</b>	APP CON <b>127.775 377.075</b>	NAVY JACKSONVILLE TOWER <b>125.15 (CTAF) 340.2</b>	GND CON <b>128.6 336.4</b>	CLNC DEL <b>134.775 0353.675</b>	ASR/ PAR
-------------------------------	-----------------------------------	---	-------------------------------	-------------------------------------	-------------

CAUTION: Inmed seg len 3.6 NM.



EMERG SAFE ALT 100 NM 2800	ELEV 23	TDZE 13	
2000 NIP MADEN NIP 13 MERFY R-206 HUNVO R-174 MUVTE R-206 OJUCA 15 HUXUX 20 MERFY R-206 FL200	Rwy 10 ldg 8006' Rwy 14 ldg 3244'		
TACAN GRUEN NIP 1.1 HEMBO NIP 2.3 NOBUE NIP 5.4 ZATUN R-106 HUNVO R-174 MUVTE R-206 OJUCA 15 HUXUX 20 MERFY R-206 FL200	700 1600 2100 2800 4000 8000 13,000 2,99° TCH 60		
CATEGORY	C	D	E
S-28 *		400-7/8	387 (400-7/8)
CIRCLING	560-1½ 537 (600-1½)	780-2½ 757 (800-2½)	980-3 957 (1000-3)
			HIRL Rwy 10-28

# HI-TACAN Z RWY 28

SE-3, 28 NOV 2024 to 26 DEC 2024

SE-3, 28 NOV 2024 to 26 DEC 2024