

# TACAN Y RWY 28

TACAN NIP Chan 19	APCH CRS 286°	Rwy ldg TDZE 13 Arprt Elev 23
----------------------	------------------	--

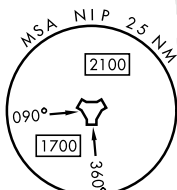
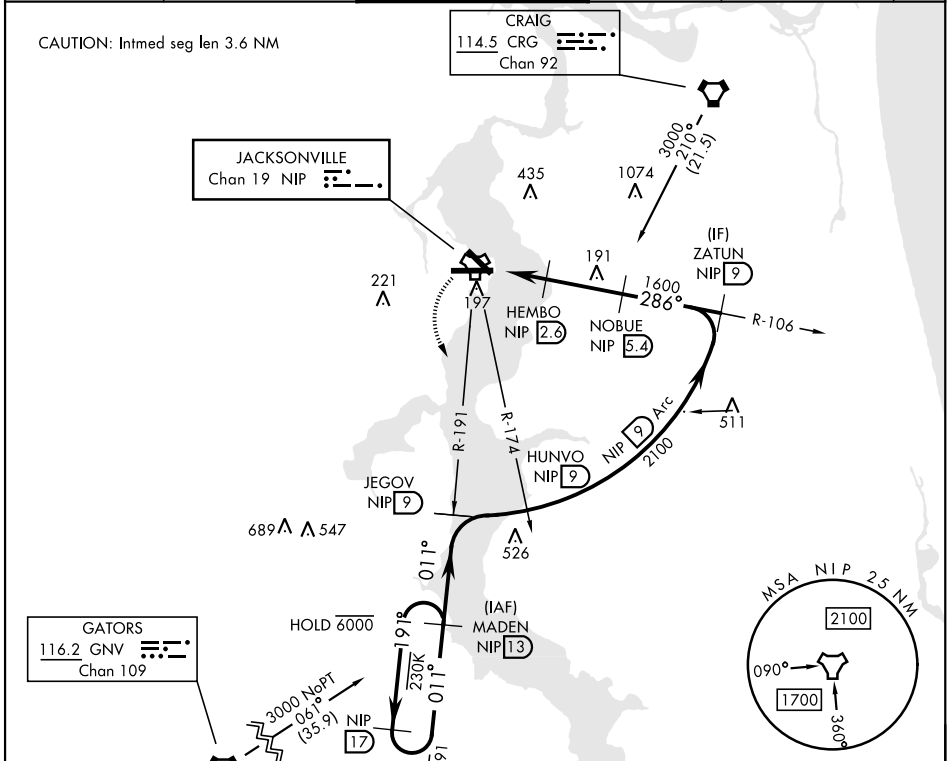
[USN]

JACKSONVILLE NAS (TOWERS FLD) (KNIP)

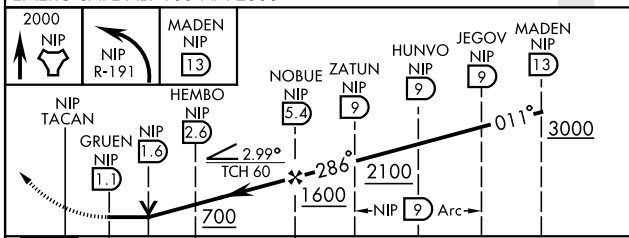
<p>▼ *When ALS inop, increase CAT AB vis to 1 mile, CAT CD vis to 1½ miles.</p>	<p>SALSF </p>	<p>MISSED APPROACH: Climb to 2000 direct NIP TACAN and turn left outbound R-191 to MADEN and hold.</p>
---	-------------------	--

<p>ATIS 124.35 290.425</p>	<p>APP CON 127.775 377.075</p>	<p>NAVY JACKSONVILLE TOWER 125.15 (CTAF) 340.2</p>	<p>GND CON 128.6 336.4</p>	<p>CLNC DEL 134.775 0353.675</p>	<p>ASR/PAR</p>
--------------------------------	------------------------------------	--	--------------------------------	--------------------------------------	----------------

CAUTION: Intmed seg len 3.6 NM

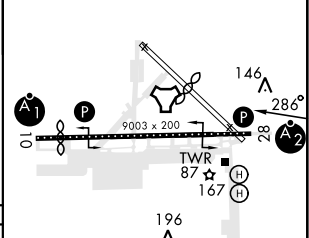


• 249  
EMERG SAFE ALT 100 NM 2800



ELEV 23	TDZE 13
---------	---------

Rwy 10 ldg 8006'  
Rwy 14 ldg 3244'



CATEGORY	A	B	C	D
S-28*	400-¾ 387 (400-¾)		400-⅞ 387 (400-⅞)	
CIRCLING	500-1 477 (500-1)		560-1½ 537 (600-1½)	780-2½ 757 (800-2½)

HIRL Rwy 10-28

# TACAN Y RWY 28

SE-3, 28 NOV 2024 to 26 DEC 2024

SE-3, 28 NOV 2024 to 26 DEC 2024