

KEY WEST, FLORIDA

TACAN Y RWY 32

TACAN NQX Chan 78	APCH CRS 335°	Rwy Idg TDZE Arprt Elev 7000 4 6
--------------------------	----------------------	---

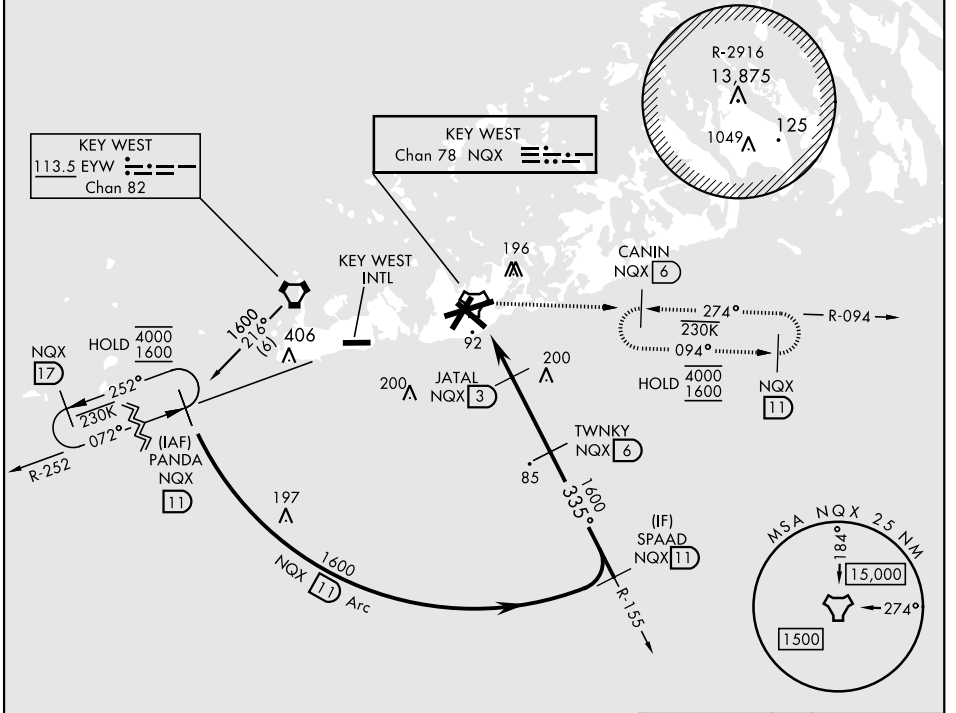
AL-214 [USN] KEY WEST NAS (BOCA CHICA FLD) (KNQX)

ATIS ★ 307.025		NAVY KEY WEST APP CON 124.025 313.7		NAVY KEY WEST TOWER ★ 118.575 340.25		GND CON 121.7 336.45		CLNC DEL 121.2 357.4		ASR/PAR	
-----------------------	--	--	--	---	--	-----------------------------	--	-----------------------------	--	----------------	--

MISSED APPROACH: Climb to 500. Then climbing right turn to 1600, intercept NQX R-094 to CANIN (NQX R-094/6 DME) and hold.

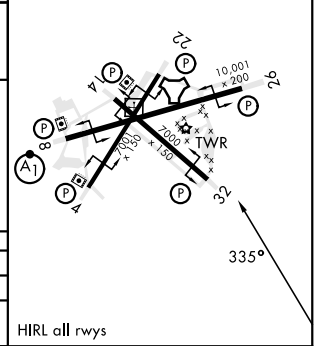
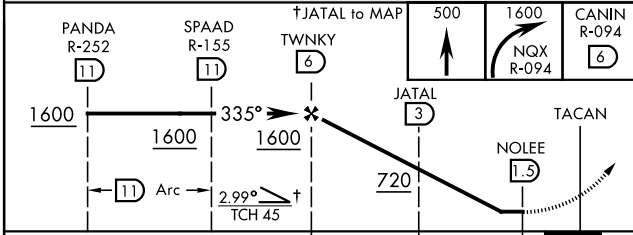
CAUTION: Short Intermediate Segment

CAUTION: Balloon with strobe light on unmarked cable to 14,000 in R-2916.



EMERG SAFE ALT 100 NM 15,000

ELEV 6	TDZE 4
--------	--------



CATEGORY	A	B	C	D
S-32	360-1	356	(400-1)	
CIRCLING	440-1 434 (500-1)	500-1 494 (500-1)	500-1½ 494 (500-1½)	560-2 554 (600-2)

HIRL all rwys

KEY WEST, FLORIDA 24°34'N-81°41'W KEY WEST NAS (BOCA CHICA FLD) (KNQX)

Orig 23FEB23

TACAN Y RWY 32

SE-3, 28 NOV 2024 to 26 DEC 2024

SE-3, 28 NOV 2024 to 26 DEC 2024