

KEY WEST, FLORIDA

TACAN Y RWY 8

TACAN NQX Chan 78	APCH CRS 072°	Rwy ldg 10,001 TDZE 4 Arprt Elev 6
-----------------------------	-------------------------	---

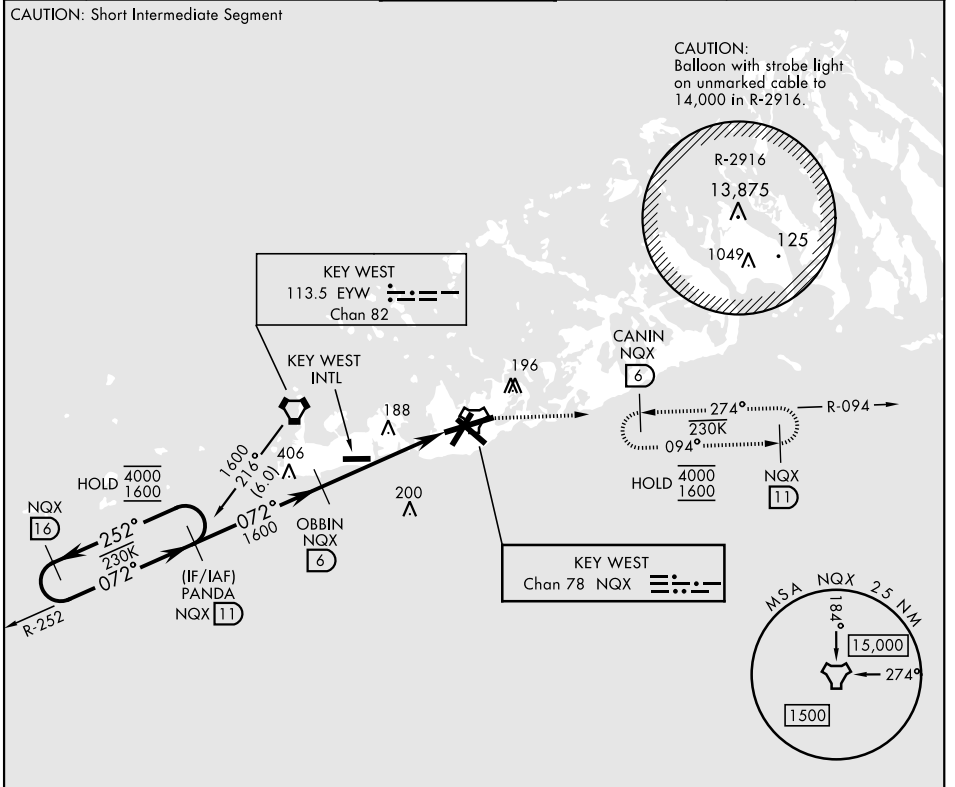
AL-214 [USN] KEY WEST NAS (BOCA CHICA FLD) (KNQX)

▼ * When ALS inop, increase CAT AB vis to 1 mile, CAT CD vis to 1¼ miles.

ALSF-1

MISSED APPROACH: Climb to 1600 via R-252 to NQX TACAN then via R-094 to CANIN (NQX R-094/6 DME) and hold.

ATIS * 307.025	NAVY KEY WEST APP CON 124.025 313.7	NAVY KEY WEST TOWER * 118.575 340.25	GND CON 121.7 336.45	CLNC DEL 121.2 357.4	ASR/PAR
--------------------------	---	--	--------------------------------	--------------------------------	---------



EMERG SAFE ALT 100 NM 15,000

	ELEV 6		TDZE 4	
	NQX 16	PANDA R-252 11	OBBIN 6	TACAN
	4000	1600	1600	ZALVO 2.3 1-1
	← 252°	← 072°	← 072°	2.97° TCH 43
				4.9 NM
CATEGORY	A	B	C	D
S-8 *	440-½	436 (500-½)	440-¾	436 (500-¾)
CIRCLING	440-1 434 (500-1)	500-1 494 (500-1)	500-1½ 494 (500-1½)	560-2 554 (600-2)

HIRL all rwys

KEY WEST, FLORIDA 24°34'N-81°41'W KEY WEST NAS (BOCA CHICA FLD) (KNQX)

Amtd 4 23FEB23

TACAN Y RWY 8

SE-3, 28 NOV 2024 to 26 DEC 2024

SE-3, 28 NOV 2024 to 26 DEC 2024