

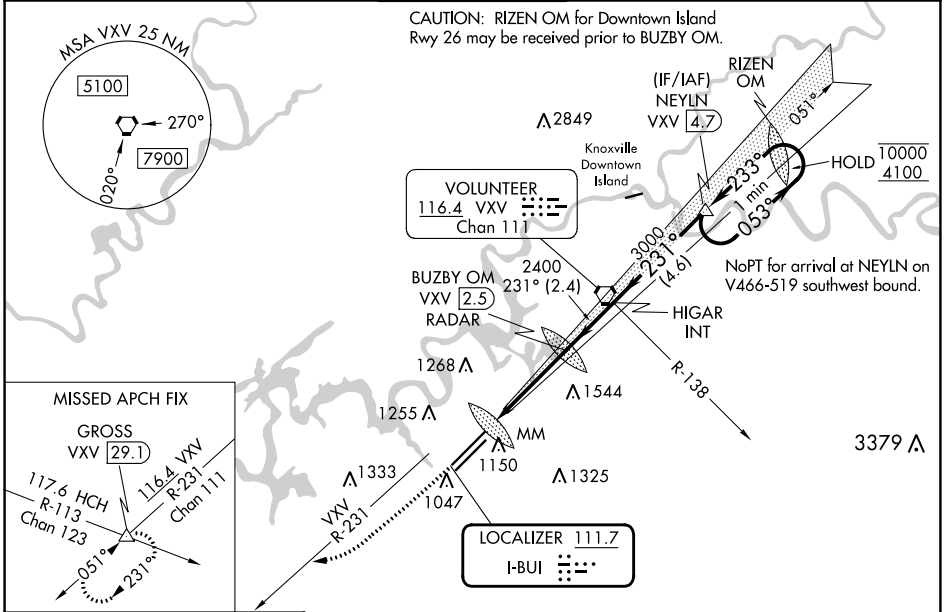
LOC I-BUI <b>111.7</b>	APP CRS <b>231°</b>	Rwy Idg TDZE Apt Elev	<b>9495</b> <b>984</b> <b>986</b>
---------------------------	------------------------	-----------------------------	---

# ILS or LOC RWY 23R

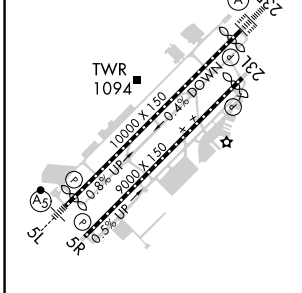
MC GHEE TYSON (T'YS)

DME or RADAR required.		ALSIF-2	MISSED APPROACH: Climb to 2000 then climbing right turn to 4000 on heading 240° and VXV VORTAC R-231 to GROSS INT/VXV 29.1 DME and hold.
<p>▼ For inop ALS, increase S-ILS 23R Cat E visibility to RVR 4000; increase S-LOC 23R Cat C/D/E visibility to 1/8 SM.</p>			

ATIS <b>128.35</b>	KNOXVILLE APP CON <b>123.9 360.8</b>	KNOXVILLE TOWER <b>121.2 257.8</b>	GND CON <b>121.9 348.6</b>	CLNC DEL <b>121.65</b>
-----------------------	---	---------------------------------------	-------------------------------	---------------------------



ELEV 986	<b>D</b>	TDZE 984
----------	----------	----------



HIRL Rws 5L-23R and 5R-23L  
REIL Rws 5R and 23L  
TDZ/CL Rws 5R and 23R

FAF to MAP 4.2 NM

Knots	60	90	120	150	180
Min:Sec	4:12	2:48	2:06	1:41	1:24

2000	4000	VXV R-231	GROSS	One Minute Holding Pattern		
↑	hdg 240°		△			
<p>NEYLN VXV 4.7</p> <p>BUZBY OM VXV 2.5 RADAR</p> <p>HIGAR INT</p> <p>3000</p> <p>2400</p> <p>2364</p> <p>053° → 10000</p> <p>← 233° 4100</p> <p>GS 3.00° TCH 53</p>						
<p>0.3 1.3 2.5 NM 2.4 NM 4.6 NM</p>						
CATEGORY	A	B	C	D	E	
S-ILS 23R	1184/18 200 (200-1/2)					
S-LOC 23R	1560/24	576 (600-1/2)	1560-1/4	576 (600-1/4)		
CIRCLING	1560-1	574 (600-1)	1660-2	1900-3	914 (1000-3)	674 (700-2)

SE-1, 28 NOV 2024 to 26 DEC 2024

SE-1, 28 NOV 2024 to 26 DEC 2024