

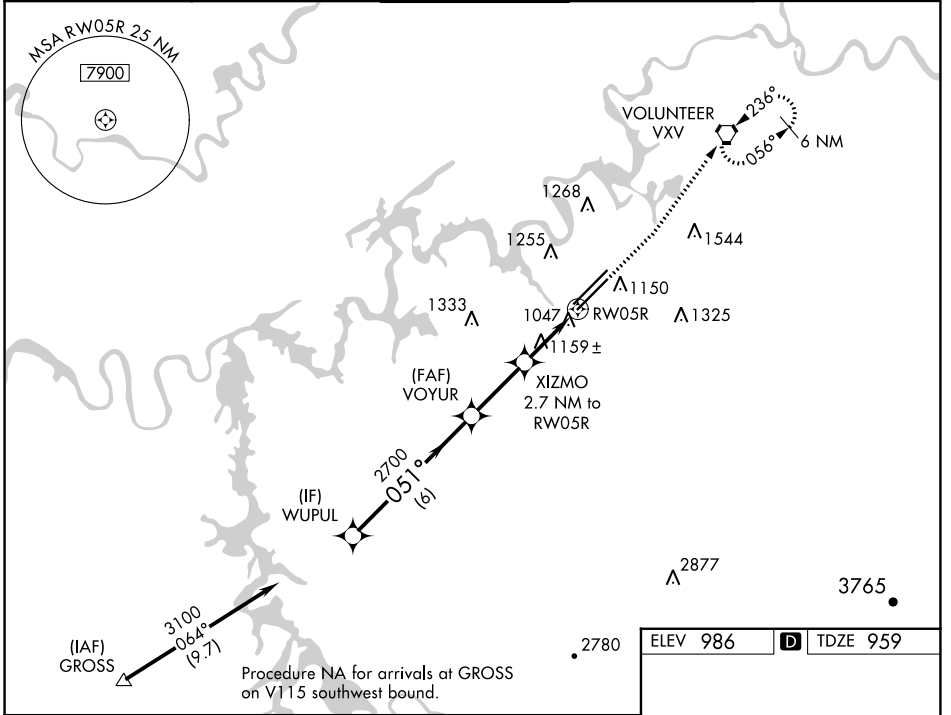
WAAS CH 97410 W05B	APP CRS 051°	Rwy Idg TDZE Apt Elev	8600 959 986
--	------------------------	-----------------------------	---

RNAV (GPS) RWY 5R

MC GHEE TYSON (T'YS)

RNP APCH - GPS.		MISSED APPROACH: Climb to 1500 then climb to 4000 direct VXV VORTAC and hold, continue climb-in-hold to 4000.		
<p>For uncompensated Baro-VNAV systems, LNAV/VNAV NA below -10°C or above 54°C.</p>				

ATIS 128.35	KNOXVILLE APP CON 123.9 360.8	KNOXVILLE TOWER 121.2 257.8	GND CON 121.9 348.6	CLNC DEL 121.65
-----------------------	---	--	-------------------------------	---------------------------



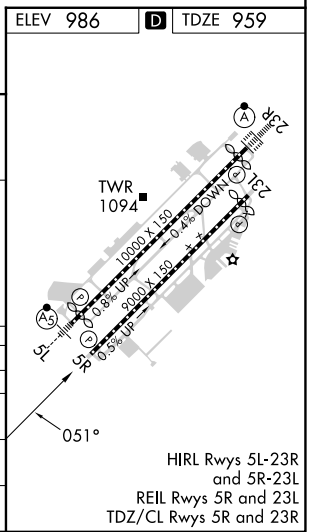
Procedure NA for arrivals at GROSS on V115 southwest bound.

VGSI and RNAV glidepath not coincident (VGSI Angle 3.00/TCH 50).

WUPUL	VOYUR	XIZMO	RW05R
3100	2700	2.7 NM to RW05R	
GP 3.00° TCH 43	1840	1.4 NM to RW05R	
		1.3 NM	1.4 NM
		2.7 NM	
		6 NM	

1500	4000	VXV

CATEGORY	A	B	C	D
LPV DA		1159-3/4	200 (200-3/4)	
LNAV/VNAV DA		1276-1 1/8	317 (300-1 1/8)	
LNAV MDA	1420-1	461 (500-1)	1420-1 3/8	461 (500-1 3/8)
CIRCLING	1500-1 514 (600-1)	1620-1 634 (700-1)	1660-2 674 (700-2)	1900-3 914 (1000-3)



SE-1, 28 NOV 2024 to 26 DEC 2024

SE-1, 28 NOV 2024 to 26 DEC 2024