

WAAS CH 56509 W13A	APP CRS 135°	Rwy Idg TDZE Apt Elev	5310 656 656
--	------------------------	-----------------------------	---

RNAV (GPS) RWY 13

LA CROSSE RGNL (LSE)

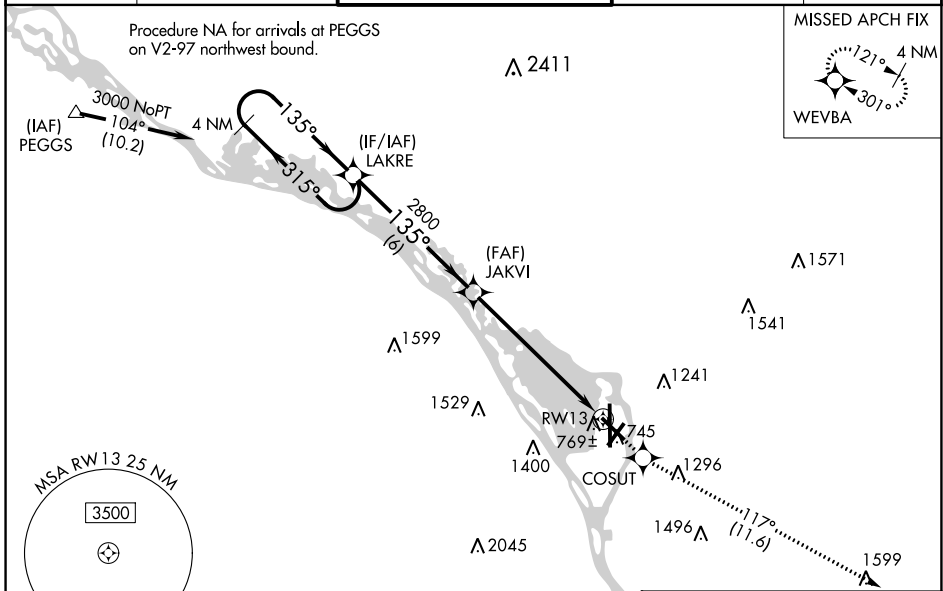
⚠ Baro-VNAV NA when using Winona altimeter setting. For uncompensated Baro-VNAV systems, LNAV/VNAV NA below -27° C (-1.6° F) or above 54° C (130° F). DME/DME RNP-0.3 NA. Helicopter visibility reduction below 3/4 SM NA. Circling to Rwy 22 NA at night.

⚠ -22°C

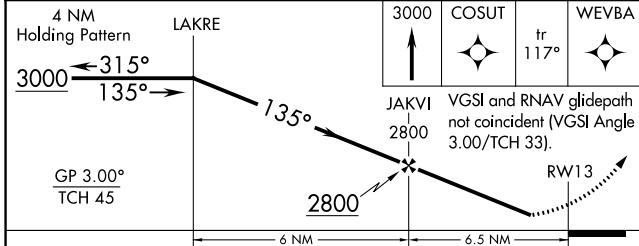
When local altimeter setting not received, use Winona altimeter setting and increase DA 53 feet, increase LPV and LNAV/VNAV visibility 1/4 mile all Cats, increase all MDA 60 feet, increase LNAV Cats C/D and Circling Cat B visibility 1/4 mile.

MISSED APPROACH:
Climb to 3000 direct COSUT and on track 117° to WEVBA and hold.

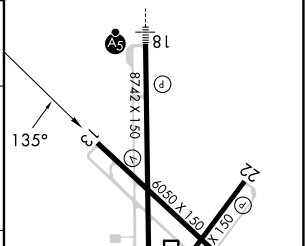
ATIS 124.95	MINNEAPOLIS CENTER 128.6 363.0	LA CROSSE TOWER * 118.45 (CTAF) 0 251.075	GND CON 121.8	UNICOM 122.95
-----------------------	--	---	-------------------------	-------------------------



ELEV 656	TDZE 656
----------	----------



ELEV 656	TDZE 656
----------	----------



CATEGORY	A	B	C	D
LPV DA		958-1	302 (400-1)	
LNAV/VNAV DA		1020-1 1/4	364 (400-1 1/4)	
LNAV MDA	1140-1	484 (500-1)	1140-1 1/8 484 (500-1 3/8)	1140-1 1/2 484 (500-1 1/2)
CIRCLING	1140-1 484 (500-1)	1460-1 804 (900-1)	1760-3 1104 (1200-3)	1820-3 1164 (1200-3)

MIRL Rwy 13-31

HIRL Rws 4-22 and 18-36

REIL Rws 13, 31 and 36

EC-3, 28 NOV 2024 to 26 DEC 2024

EC-3, 28 NOV 2024 to 26 DEC 2024