

| | | |
|--|------------------------|---|
| WAAS CH 97613 W08A | APP CRS 081° | Rwy Idg 6849 TDZE 4229 Apt Elev 4229 |
|--|------------------------|---|

RNAV (GPS) RWY 8

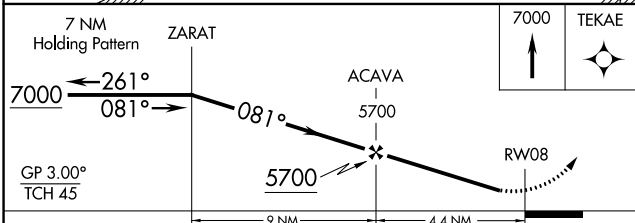
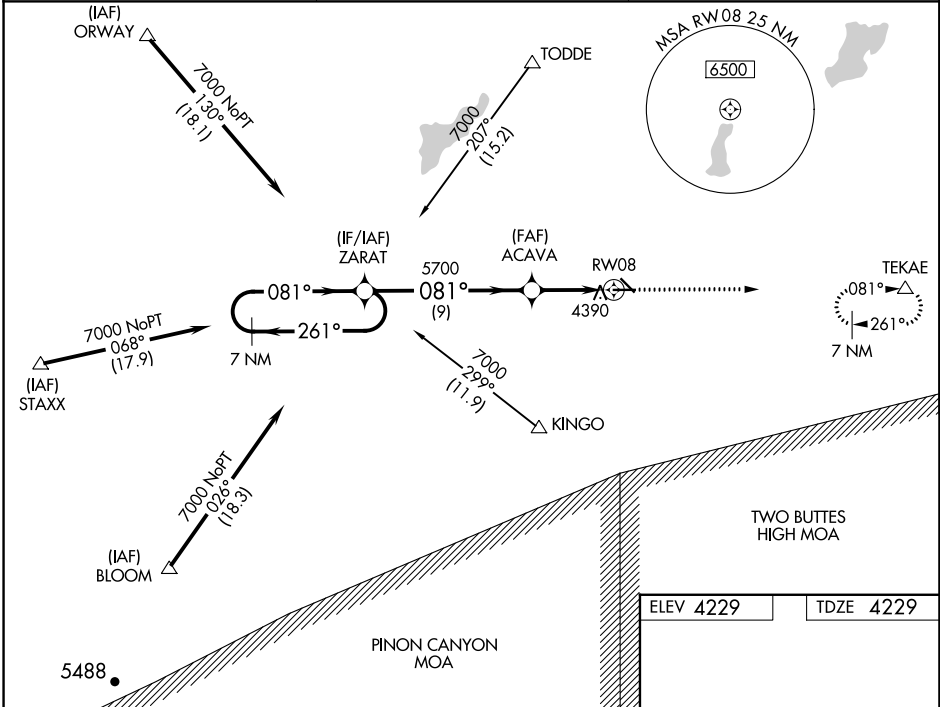
LA JUNTA MUNI (LHX)

RNP APCH - GPS.

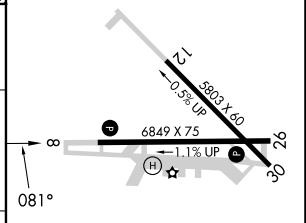
Baro-VNAV NA when using Lamar altimeter setting. For uncompensated Baro-VNAV systems, LNAV/VNAV NA below -23°C or above 40°C. When local altimeter setting not received, use Lamar altimeter setting; increase LPV DA to 4694 feet and all visibilities ½ SM; increase LNAV/VNAV DA to 4904 feet and all visibilities ½ SM; increase all MDAs 180 feet and visibility LNAV Cats C and D ½ SM and Circling Cat C ½ SM and Cat D ¾ SM. Circling Rwy 12, 30 NA at night.

MISSED APPROACH:
Climb to 7000 direct
TEKAE and hold.

| | | |
|------------------------|--|-------------------------------|
| ASOS 135.525 | DENVER CENTER 128.375 379.95 | UNICOM 123.0 (CTAF) |
|------------------------|--|-------------------------------|



| | |
|-----------|-----------|
| ELEV 4229 | TDZE 4229 |
|-----------|-----------|



| CATEGORY | A | B | C | D |
|--------------|--------------------|---|---|---|
| LPV DA | 4528-7/8 | | 299 (300-7/8) | |
| LNAV/VNAV DA | 4738-13/8 | | 509 (600-13/8) | |
| LNAV MDA | 4700-1 471 (500-1) | | 4700-13/8 471 (500-13/8) | |
| CIRCLING | 4740-1 511 (600-1) | | 4740-1 1/2 511 (600-1 1/2) 4860-2 631 (700-2) | |

REIL Rwy 8 and 26
MIRL Rwy 8-26

SW-1, 28 NOV 2024 to 26 DEC 2024

SW-1, 28 NOV 2024 to 26 DEC 2024