

**TACAN RWY 24**  
LAKEHURST MAXFIELD FLD,  
(JOINT BASE MC GUIRE DIX LAKEHURST) (KNEL)

TACAN NEL Chan <b>55</b>	APCH CRS <b>250°</b>	Rwy Idg TDZE Arpt Elev <b>5002</b> <b>101</b> <b>101</b>
-----------------------------	-------------------------	---

AL-223 [USN]

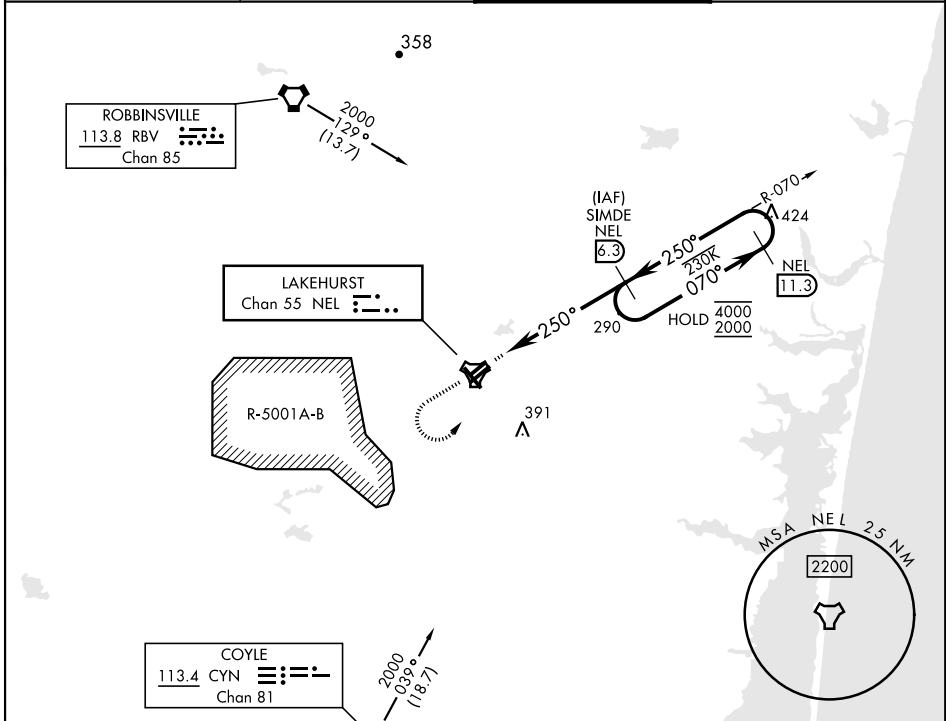
(JOINT BASE MC GUIRE DIX LAKEHURST) (KNEL)

**▼** \* When ALS inop increase CAT AB vis to 1 mile, CAT CD vis to 1½ miles.

MALS R **A5**

MISSED APPROACH: Climb to 700, then climbing left turn to 2000 to intercept NEL TACAN R-070 and hold.

ATIS ★ <b>276.525</b>	MC GUIRE APP CON <b>126.475 363.8</b>	TOWER ★ <b>127.775 360.2</b>	GND CON <b>118.375 307.375</b>
--------------------------	--	---------------------------------	-----------------------------------



NE-2, 28 NOV 2024 to 26 DEC 2024

NE-2, 28 NOV 2024 to 26 DEC 2024

ELEV	101	TDZE	101
------	-----	------	-----

EMERG SAFE ALT 100 NM 4100

CATEGORY	A	B	C	D
S-24*	540-½ 439 (500-½)	540-¾ 439 (500-¾)		
CIRCLING	660-1 559 (600-1)	720-1 619 (700-1)	720-1¾ 619 (700-1¾)	720-2 619 (700-2)

HIRL Rwy 6-24  
MRL Rwy 063°-243°