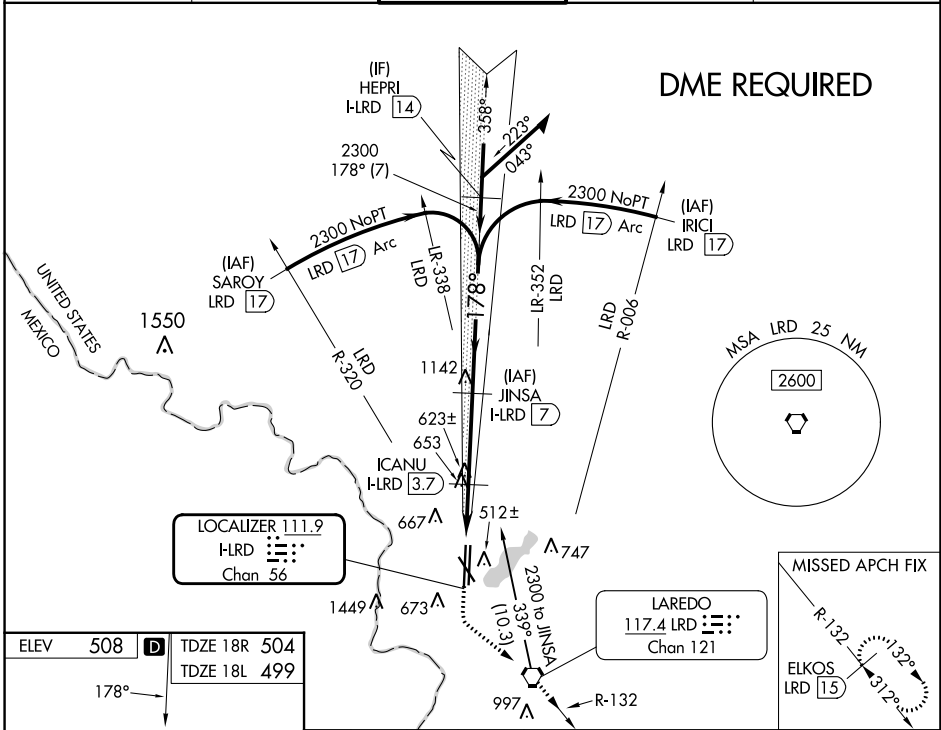


LOC/DME I-LRD 111.9 Chan 56	APP CRS 178°	Rwy Idg 8743 8236	18R 504 499	18L 508 508
TDZE		Apt Elev		

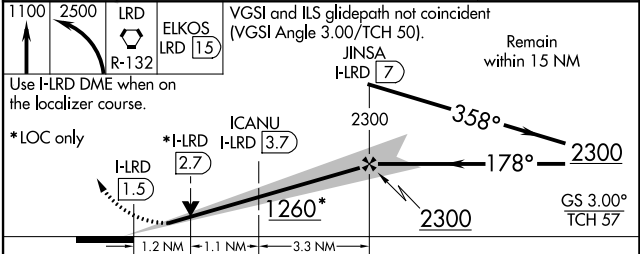
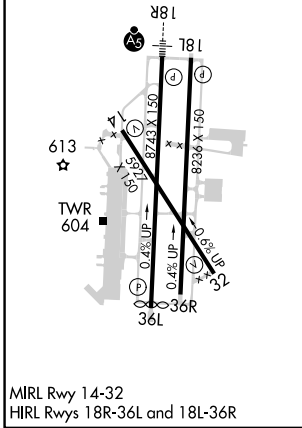
ILS or LOC RWY 18R

LAREDO INTL (L.R.D)

<p>Circling NA west of Rwy 14 and 36L. DME required. For inop ALS, increase S-ILS 18R Cat E visibility to 3/4 SM and increase S-LOC 18R Cat C/D/E visibility to 1 1/2 SM.</p>	<p>MALS R</p>		<p>MISSED APPROACH: Climb to 1100 then climbing left turn to 2500 direct LRD VORTAC and on LRD VORTAC R-132 to ELKOS/LRD 15 DME and hold.</p>	
	<p>ATIS 125.775</p>	<p>HOUSTON CENTER 127.8 307.2</p>	<p>LAREDO TOWER ★ 120.1(CTAF) 0 257.9</p>	<p>GND CON 121.8</p>



ELEV 508	D	TDZE 18R 504	TDZE 18L 499
----------	----------	--------------	--------------



CATEGORY	A	B	C	D	E
S-ILS 18R	704-1/2		200 (200-1/2)		
S-LOC 18R	920-1/2	416 (500-1/2)	920-3/4	416 (500-3/4)	
SIDESTEP 18L	920-1	421 (500-1)	920-1 1/2 421 (500-1 1/2)	920-2	421 (500-2)
C CIRCLING	940-1 432 (500-1)	980-1 472 (500-1)	1100-1 1/2 592 (600-1 1/2)	1200-2 1/4 692 (700-2 1/4)	1200-2 1/2 692 (700-2 1/2)