


WAAS Ch <b>82599</b> <b>W18A</b>	APP CRS <b>178°</b>	Rwy Idg <b>8743</b> TDZE <b>504</b> Apt Elev <b>508</b>
--	------------------------	---

# RNAV (GPS) RWY 18R

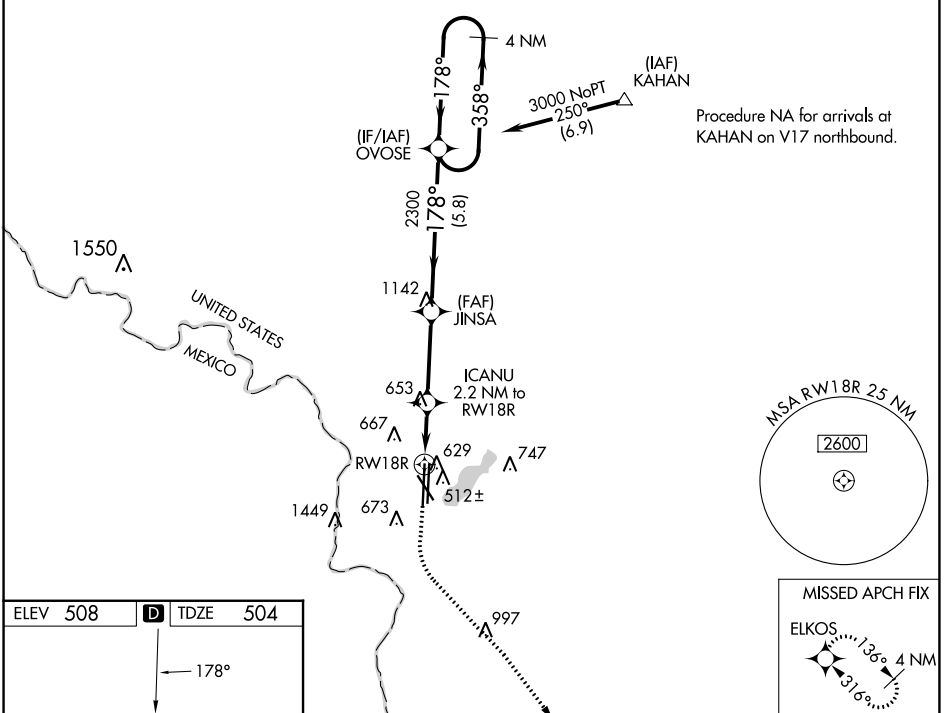
LAREDO INTL (L.R.D)

**⚠** For uncompensated Baro-VNAV systems, LNAV/VNAV NA below 1°C (34°F) or above 54°C (130°F). Circling NA West of Rwy 14 and 36L. DME/DME RNP-0.3 NA. For inop ALS, increase LPV Cat E visibility to ¾ SM, LNAV/VNAV all Cats visibility to 7/8 SM, and LNAV Cats C/D/E to 1 SM.

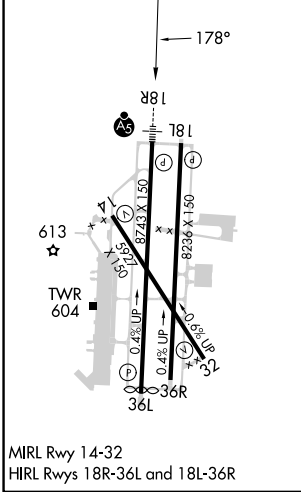
**MALSR** 

**MISSED APPROACH:**  
Climb to 1000 then climbing left turn to 2500 direct ELKOS and hold.

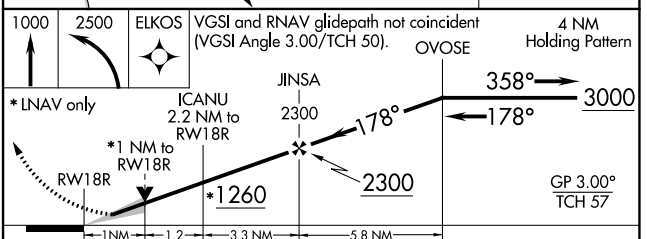
ATIS <b>125.775</b>	HOUSTON CENTER <b>127.8 307.2</b>	LAREDO TOWER* <b>120.1(CTAF) 0 257.9</b>	GND CON <b>121.8</b>	UNICOM <b>122.95</b>
------------------------	--------------------------------------	---	-------------------------	-------------------------



ELEV <b>508</b>	<b>D</b>	TDZE <b>504</b>
-----------------	----------	-----------------



MIRL Rwy 14-32  
HIRL Rwy 18R-36L and 18L-36R



CATEGORY	A	B	C	D	E
LPV DA	704-½ 200 (200-½)				
LNAV/VNAV DA	810-½ 306 (400-½)				
LNAV MDA	880-½ 376 (400-½)		880-5/8 376 (400-5/8)		
<b>C</b> CIRCLING	940-1 432 (500-1)	980-1 472 (500-1)	1100-1½ 592 (600-1½)	1200-2¼ 692 (700-2¼)	1200-2½ 692 (700-2½)

SC-3, 28 NOV 2024 to 26 DEC 2024

SC-3, 28 NOV 2024 to 26 DEC 2024